



AUTISM FRIENDLY PRE VISIT GUIDE

Welcome to Orchard Leisure Centre

armaghbanbridgecraigavon.gov.uk
📱/abcb_council

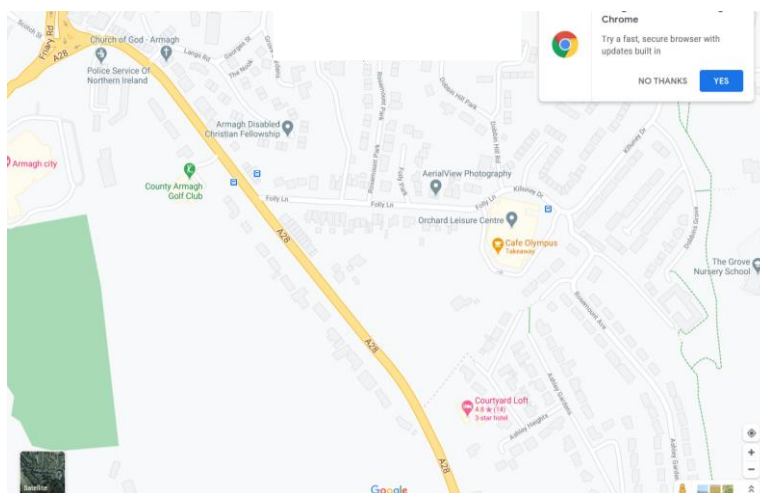


**Armagh City
Banbridge
& Craigavon**
Borough Council

AUTISM FRIENDLY PRE VISIT GUIDE

Everyone feels different when trying something new.
There are new sounds, smells and you may not know what to expect.

Location of Venue



Map Source: Google Maps

Orchard Leisure Centre is located just off the main Newry Road in Armagh. It can be accessed by car or bus and is within 10 mins walking distance of the Town centre.

Car Park



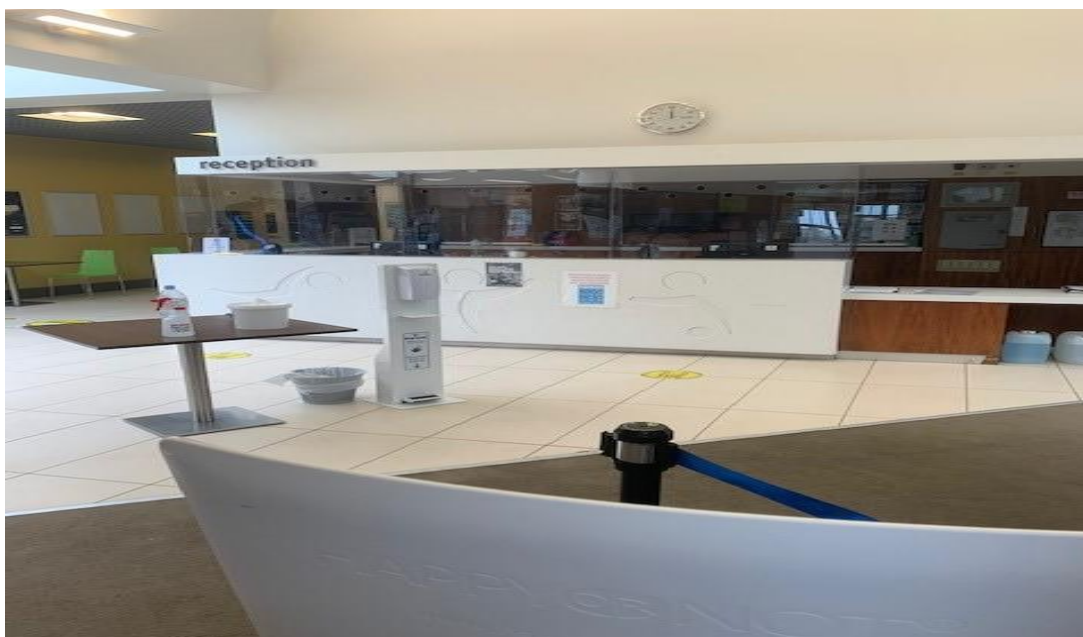
AUTISM FRIENDLY PRE VISIT GUIDE

Front Entrance

When you come in, speak to a member of staff and they will advise you where you should go.



Reception



Our building consists of 2 main areas known as the Dry Side and the Wet Side.

AUTISM FRIENDLY PRE VISIT GUIDE

Dry Side Facilities

Café Olympus

Located in the Reception Lobby and sells hot snacks and drinks.



Gulliver's Soft Play

Located on the Ground Floor. Used for children's fun sessions and birthday parties.



AUTISM FRIENDLY PRE VISIT GUIDE

Multi Purpose Room 1

Located on the Ground Floor. Used for activity classes, meetings and birthday parties.



Multi Purpose Room 2

Located on the Lower Ground Floor and accessed by lift or stairs. Used for Activity Classes, Meetings and Birthday Parties.



AUTISM FRIENDLY PRE VISIT GUIDE

Main Hall

Located on the Lower Ground Floor and accessed by lift or stairs. Used for a wide variety of activities such as 5-a-side Football, Badminton, Basketball, Martial Arts, Activity Classes, Birthday Parties and Summer Schemes.



Dry Side Changing Facilities

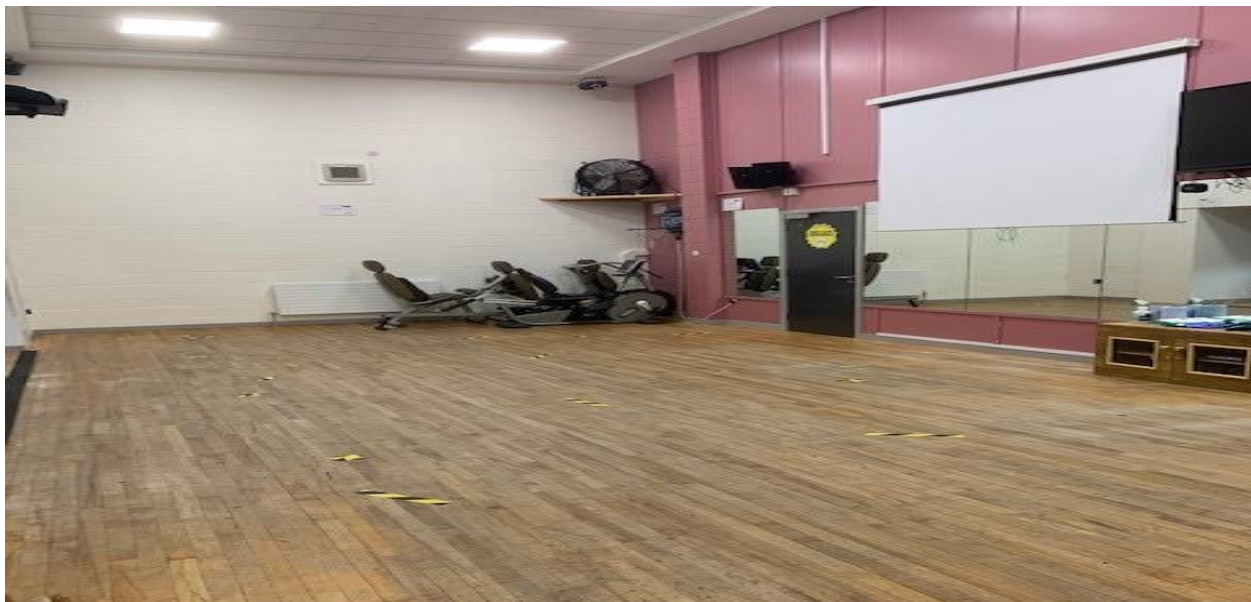
Located on the Lower Ground Floor and accessed by lift or stairs. They consist of Male, Female and Accessible changing, showering and toilet facilities for those using the Main Hall, Studio or Fitness Suite.



AUTISM FRIENDLY PRE VISIT GUIDE

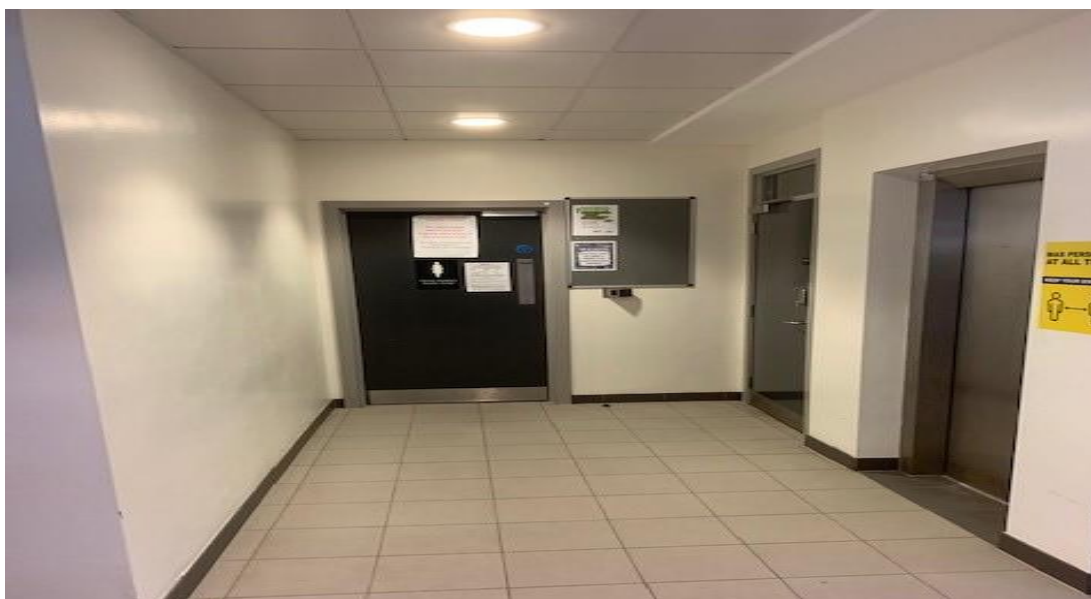
Studio

Located on the Lower Ground Floor and accessed by lift or stairs. Used mainly for classes such as Cardio Cycle and Dance.



Female Members Changing

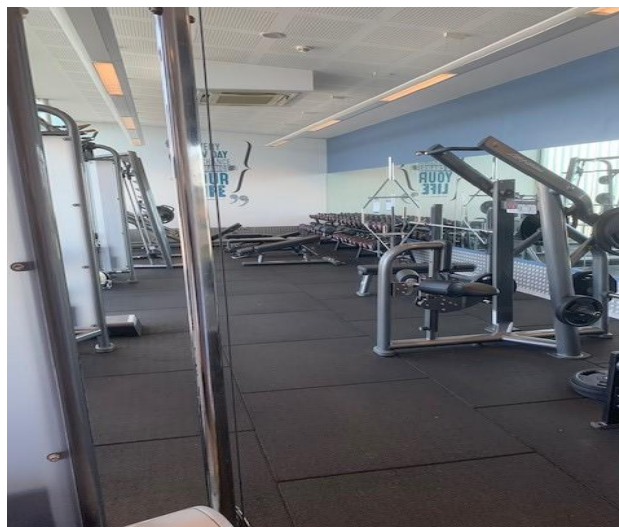
The Female Members Changing facilities are located on the ground floor and are accessible via the Dry Viewing Gallery. They consist of shower, changing and toilet facilities and provide access to the Pool area, the Relaxation Suite and the Fitness Suite.



AUTISM FRIENDLY PRE VISIT GUIDE

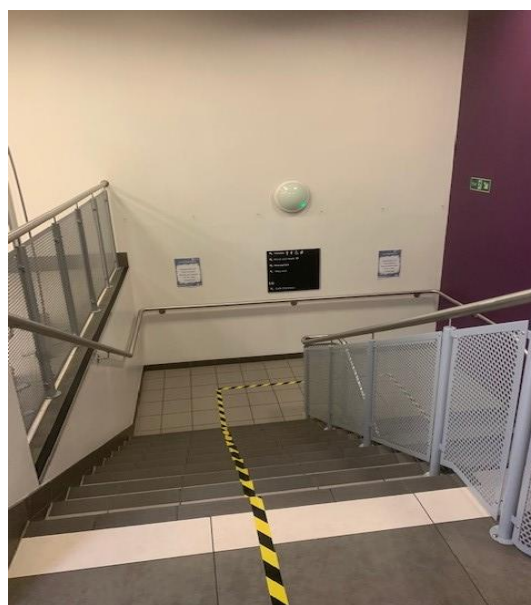
Fitness Suite

Located on the first floor and accessed by lift or stairs at the end of the Dry Viewing Gallery. It consists of a CV (Cardiovascular) Area with a variety of treadmills, cross trainers, bikes and rowing machines, and, a Free Weights Area with a variety of strength training equipment.



Access to Dry Side Facilities.

This lift and flight of stairs are located on the ground floor next to the Reception area and provide access to Multi Purpose Room 2, Dry Side Changing Facilities and the Main Hall.



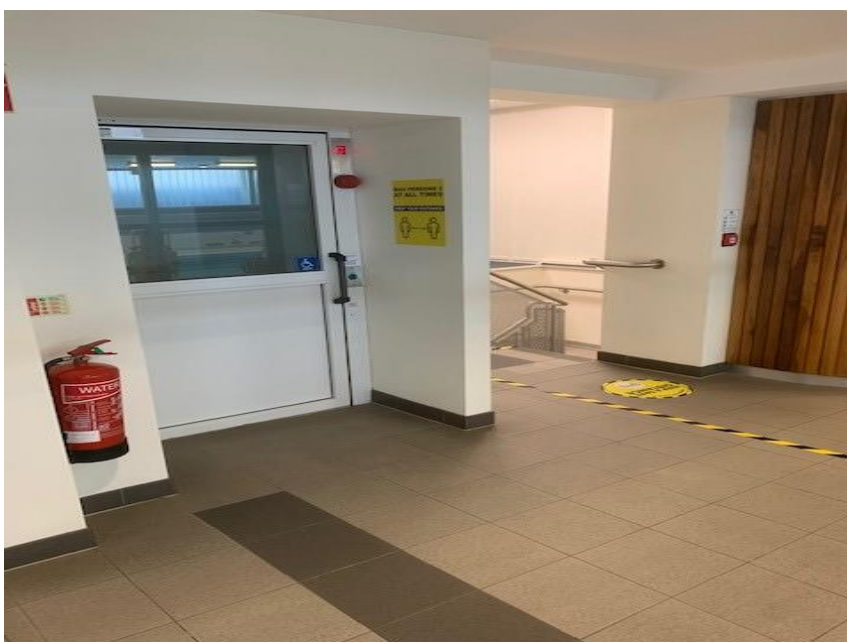
AUTISM FRIENDLY PRE VISIT GUIDE

Dry Viewing Gallery

The Dry Viewing Gallery is located off the Reception lobby and provides access to the Studio, Female Members Changing and the Fitness Suite.



The Studio lift and stairs are located at the end of the Dry Viewing Gallery and provide access to the Studio.



Access to Fitness Suite

The Fitness Suite lift and stairs are located at the end of the Dry Viewing Gallery.



AUTISM FRIENDLY PRE VISIT GUIDE

Wet Side Facilities

Accessible Toilets

Located just off the Reception lobby and consist of Male, Female and Accessible toilet and hand washing facilities.



Social Area

Located beside the Reception lobby and consists of tables, chairs, TV and has WiFi available.



AUTISM FRIENDLY PRE VISIT GUIDE

Accessible Changing Area

Located at the start of the Glazed Corridor, and consists of 4 individual changing and showering cubicles with changing hoist, shower trolley and lockers. The pool area can be accessed via the Accessible Ramp.



Male Members Changing Rooms

Located on the Lower Ground Floor and accessed by stairs only. They consist of changing, showering and toilet facilities and provide access to the Pool area, the Fitness Suite, and the Relaxation Suite.



AUTISM FRIENDLY PRE VISIT GUIDE

Village Changing Area

Located on the Lower Ground Floor and accessed by stairs from the Glazed Corridor. They consist of Male, Female and Accessible changing, showering and toilet facilities for those using the Pools or the Relaxation Suite.



Pool Area

Located on the Ground Floor and accessed by ramp from the Accessible Changing and by stairs from the Village Changing Area. It consists of a Main Pool, Learner Pool and Viewing Gallery.



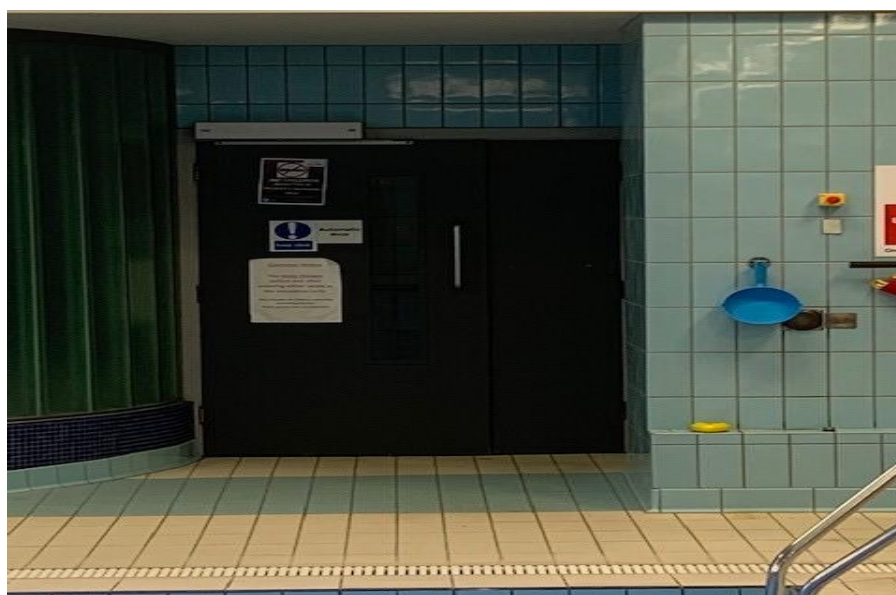
AUTISM FRIENDLY PRE VISIT GUIDE

Relaxation Suite

Located on the Ground Floor and accessed from the Pool Side and from the Male and Female Members Changing Areas. It consists of a hot and a cold Jacuzzi, Steam Room, Sauna, and Relaxation Area consisting of chairs and loungers.



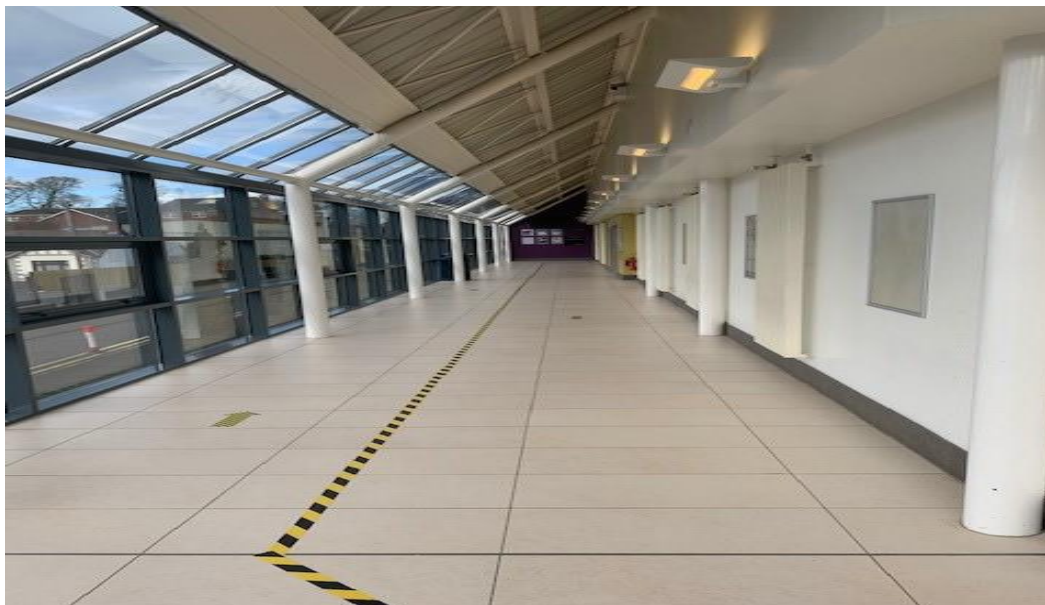
Entrance to Relaxation Area, accessed from the Pool Side.



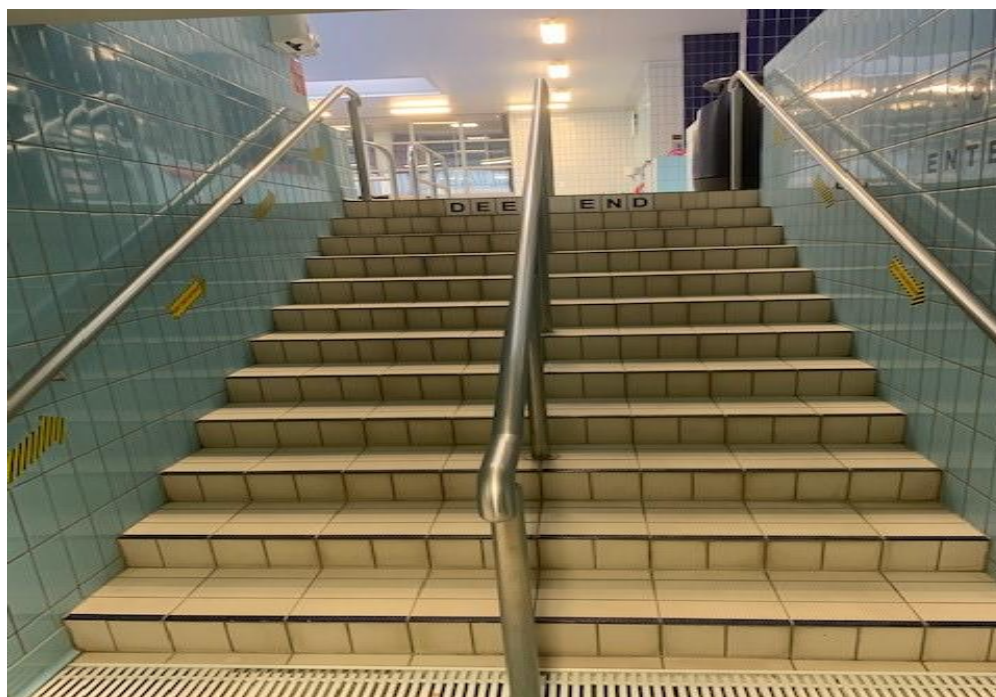
AUTISM FRIENDLY PRE VISIT GUIDE

Access to Wet Side Facilities.

The Glazed Corridor is located to the left of the Reception Lobby and provides access to the, Male Members Changing and the Village Changing Facilities.



The steps below provide access to the Pool Area from the Village Changing Area.



AUTISM FRIENDLY PRE VISIT GUIDE

Noises you might hear at Orchard Leisure Centre

- People talking, shouting and laughing
- Fire Alarm Testing
- Background music and/or Television
- Public Announcements
- Chairs and tables being moved around
- Loud music or background music
- Fitness equipment banging
- Gym Instructors and Swim Teachers shouting out instructions
- Lifeguard whistles in swimming pool

Smells you might notice at Orchard Leisure Centre

- Cleaning products
- Food, tea and coffee.
- Chemicals used to keep the pool water clean
- Shower gel and deodorant

If you have any questions about our facilities or activities please speak to a member of staff, they can be identified by their uniform.

Staff Uniform



For further information please contact
Armagh City, Banbridge and Craigavon Borough Council

 0300 0300 900

 info@armaghbanbridgecraigavon.gov.uk

 armaghbanbridgecraigavon.gov.uk

  Find us on Facebook and Twitter



**Armagh City
Banbridge
& Craigavon**
Borough Council