



# **AUTISM FRIENDLY PRE VISIT GUIDE**

## **Welcome to Gilford Community Centre**

[armaghbanbridgecraigavon.gov.uk](http://armaghbanbridgecraigavon.gov.uk)  
📱/abcb\_council

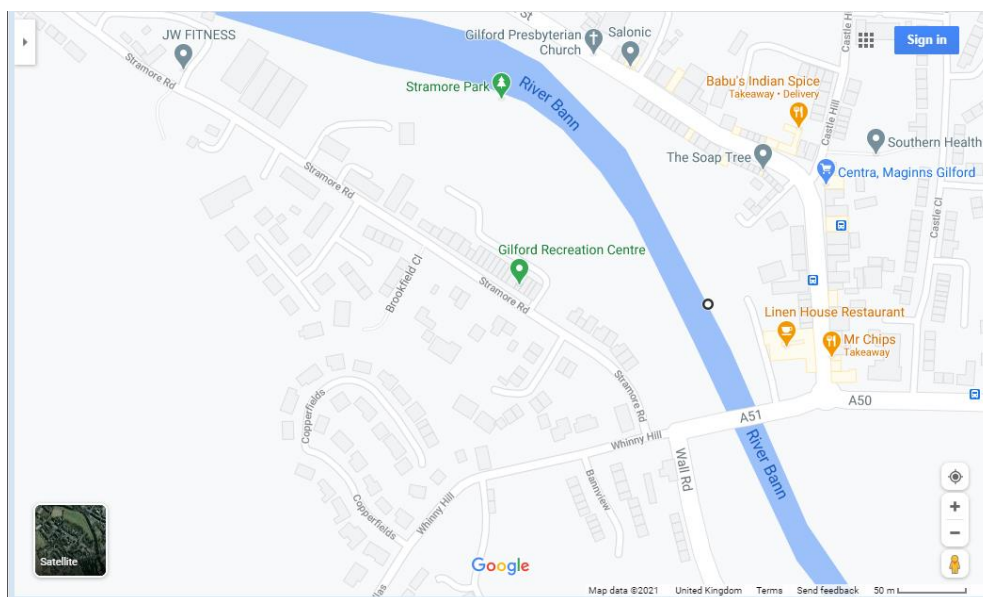


**Armagh City  
Banbridge  
& Craigavon**  
Borough Council

# AUTISM FRIENDLY PRE VISIT GUIDE

Everyone feels different when visiting a new place or trying something new. There are new sounds, smells and you may not know what to expect.

## Location of Gilford Community Centre



Map Source: Google Maps

The Centre can be accessed via car and by foot, it is a 10 -15 minute walk from the Town centre.

When you arrive at Gilford Community Centre you will see a sign that directs you to the carpark and a sign indicating the "Centre Entrance Drop Off Point"





# AUTISM FRIENDLY PRE VISIT GUIDE

---

You will park your car in the car park below



**Entrance** – This is the entrance into Gilford Community Centre



**Welcome to Gilford Community Centre  
Reception Area**



When you come in, speak to a member of staff and they will advise you where you should go.

---

# AUTISM FRIENDLY PRE VISIT GUIDE

## Toilets

Located to the right of reception desk



## Main Hall

The Main Hall can facilitate many sports such as Badminton, Football and Netball. They can be very noisy places.



The Main Hall can be accessed via several doors along the main floor corridor

First Door leading into  
Main Hall if attending  
Climbing Wall

Second door leading into  
Main Hall if attending a  
Birthday Party



# AUTISM FRIENDLY PRE VISIT GUIDE

---

## Climbing Wall



## Birthday Party



### Noises you might find in the Main Hall:

- Loud music playing when exercise classes are in progress.
- Shouting and yelling whilst some sports are being played and when Climbing wall is being used
- Children yelling, shouting and laughing whilst Birthday party is in progress.
- Fire alarm testing, music and public announcements through speakers
- Motor noise coming from the blowers while Birthday Party is in progress

### Smells you might notice in the Main Hall:

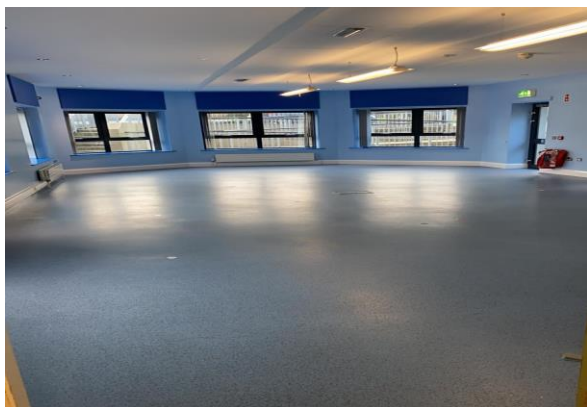
- Food
- Coffee/Tea
- Cleaning Products after Hall has been cleaned



# AUTISM FRIENDLY PRE VISIT GUIDE

---

**Committee Room** - This room can be used for Birthday Parties, Exercise Classes, Conferences or Workshops



## Noises you might find in this room:

- loud music playing when exercise classes are in progress,
- Children yelling or shouting and laughing whilst party is in progress.
- Fire alarm testing, music and public announcements through speakers
- Fitness equipment clanging and possibly banging together
- People talking loudly or shouting at times
- 2 way radio activity and staff instruction

## Smells you might notice in this room:

- Food
- Coffee/Tea
- Cleaning Products after room has been cleaned

## Fitness Suite





# AUTISM FRIENDLY PRE VISIT GUIDE

---

## Noises you might find in the Fitness Suite :

- loud music playing
- heavy weight equipment clanging and banging together
- Customers talking loudly to each other
- The whirr of machines being used by customers
- Fire alarm testing and public announcements through speakers
- Two way radio activity and staff instruction

## Smells you might notice in this room:

- Cleaning Products after room has been cleaned

# AUTISM FRIENDLY PRE VISIT GUIDE

---



## Changing Places

Gilford Community Centre is registered as having Changing Places toilet which is a larger accessible toilet for severely disabled people, it has a hoist, curtains, adult-sized changing benches and space for carers.



### Noises you might find in this room:

- Yelling or shouting if customers are in this area
- Fire alarm testing, music and public announcements through speakers

### Smells you might notice in this room:

- Cleaning Products after room has been cleaned



## AUTISM FRIENDLY PRE VISIT GUIDE

---

During your visit to Gilford Community Centre if you have any questions or queries regarding any part of our facilities or your experience there, please speak to a member of staff, they can be identified by their uniform.

### **Staff uniform.**



We hope this guide helps you navigate your way around our facility and makes it easier when you come and visit us.



**We hope to see you soon on your visit.**

**For further information please contact**  
Armagh City, Banbridge and Craigavon Borough Council

 0300 0300 900

 [info@armaghbanbridgecraigavon.gov.uk](mailto:info@armaghbanbridgecraigavon.gov.uk)

 [armaghbanbridgecraigavon.gov.uk](http://armaghbanbridgecraigavon.gov.uk)

  Find us on Facebook and Twitter



**Armagh City  
Banbridge  
& Craigavon**  
Borough Council