



# **AUTISM FRIENDLY PRE VISIT GUIDE**

## **Welcome to Brownlow Community Hub**

[armaghbanbridgecraigavon.gov.uk](http://armaghbanbridgecraigavon.gov.uk)  
🐦 /abcb\_council



**Armagh City  
Banbridge  
& Craigavon**  
Borough Council

# AUTISM FRIENDLY PRE VISIT GUIDE

---



Everyone feels different when trying something new. There are new sounds, smells and you may not know what to expect.

The Hub can be accessed by bus / car / walking and is beside Brownlow Library and Lismore Comprehensive School.



Car Parking is available at the front and side of the building and includes disabled parking and drop off area.

# AUTISM FRIENDLY PRE VISIT GUIDE

---



The entrance to the Hub



The reception desk

A member of staff can answer questions and they will advise you where you should go.

# AUTISM FRIENDLY PRE VISIT GUIDE

---



The Hub has toilets on the ground floor and 1st floor, on the right.



Lifts are located on the left in the foyer, beyond the stairs.

The are 2 floors.

# AUTISM FRIENDLY PRE VISIT GUIDE

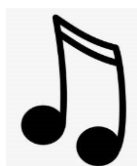
---



For assistance, please speak to a member of staff, they can be identified by their uniform.

## Noises in the Hub

Talking, music, children laughing, toys



## Smells in the Hub

Cleaning products, food, coffee



## Rooms in the Hub

- Main Hall. Can be used for performances, meetings or conferences, sports and birthday parties
- 3 large multi-use rooms. Can be used for after-school club, arts and crafts, training, dance and exercise classes
- Childcare provision and secure outdoor play space
- 5 small multi use rooms. Can be used for group meetings and small classes
- A large kitchen

We hope you enjoy your visit

**For further information please contact**  
Armagh City, Banbridge and Craigavon Borough Council

 0300 0300 900

 [info@armaghbanbridgecraigavon.gov.uk](mailto:info@armaghbanbridgecraigavon.gov.uk)

 [armaghbanbridgecraigavon.gov.uk](http://armaghbanbridgecraigavon.gov.uk)

  Find us on Facebook and Twitter



**Armagh City  
Banbridge  
& Craigavon**  
Borough Council