



AUTISM FRIENDLY PRE VISIT GUIDE

Welcome to Ashgrove Community Centre

armaghbanbridgecraigavon.gov.uk
📱/abcb_council



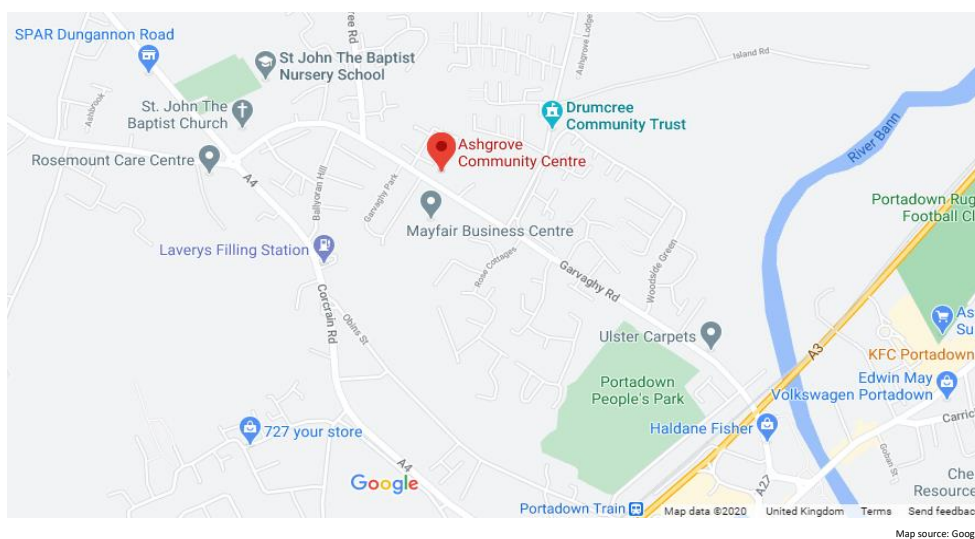
**Armagh City
Banbridge
& Craigavon**
Borough Council

AUTISM FRIENDLY PRE VISIT GUIDE

Ashgrove Community Centre



Location of Ashgrove Community Centre



On Garvaghy Road, Portadown.

AUTISM FRIENDLY PRE VISIT GUIDE

It can be accessed via bus, car & foot.
There is a bus stop outside the facility.
Portadown Train Station is a 10-15 minute walk away.

A public car park is available at the side of the facility.



This is the entrance to Ashgrove Community Centre.

There is a push button on the left-hand side of the front door that you can press to make the door open. The door opens automatically towards you.



AUTISM FRIENDLY PRE VISIT GUIDE



This window is the staff office/reception.

Useful information:

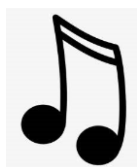
There is a hearing assistance system, which is Portable Loop.

The facility does not play background music.

Motorised scooters are allowed in public parts of the facility.

The lighting levels are varied.

Noises and smells you might notice at Ashgrove Community Centre:



AUTISM FRIENDLY PRE VISIT GUIDE



Toilets
In reception area

Accessible Toilets with Baby Changing Facilities are behind the Main Hall.



AUTISM FRIENDLY PRE VISIT GUIDE

The Main Hall

Go through the double doors in the Foyer.

It is used for birthday parties, meetings, exercise and training classes.



The Committee Room Beside the reception.

It is used for meetings, training courses, fitness classes



For assistance, please speak to a member of staff.

This is their uniform.



For further information please contact
Armagh City, Banbridge and Craigavon Borough Council

 0300 0300 900

 info@armaghbanbridgecraigavon.gov.uk

 armaghbanbridgecraigavon.gov.uk

  Find us on Facebook and Twitter



**Armagh City
Banbridge
& Craigavon**
Borough Council