

Healthy Community

Indicator Baselines



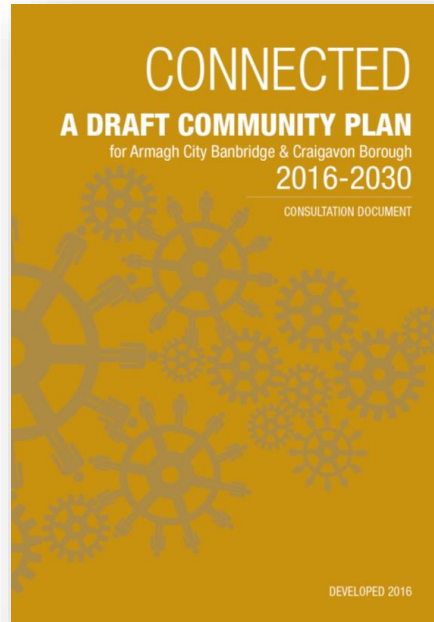
Exploring the data: what do we know about the health of our population?



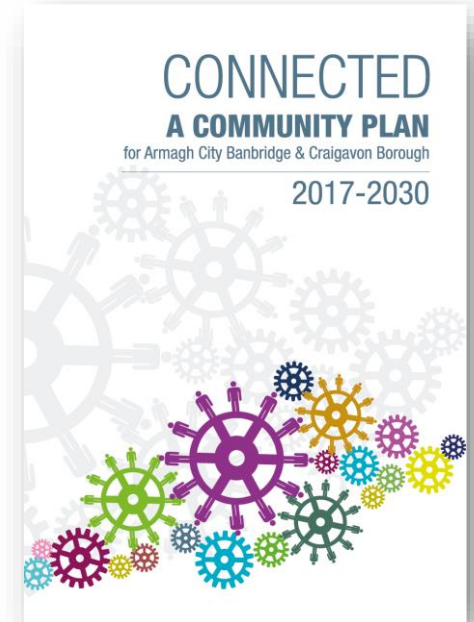
Process of developing baseline indicators...



6 BASELINE REPORTS
developed through
engagement with
providers/users



**CREATION OF DRAFT
PLAN** including proposed
indicators
PUBLIC CONSULTATION



**COMMUNITY PLAN
'CONNECTED'**
LAUNCHED

Indicators:

Reliable and robust sources, regularly available for all of borough, align with draft PfG

HEALTHY COMMUNITY

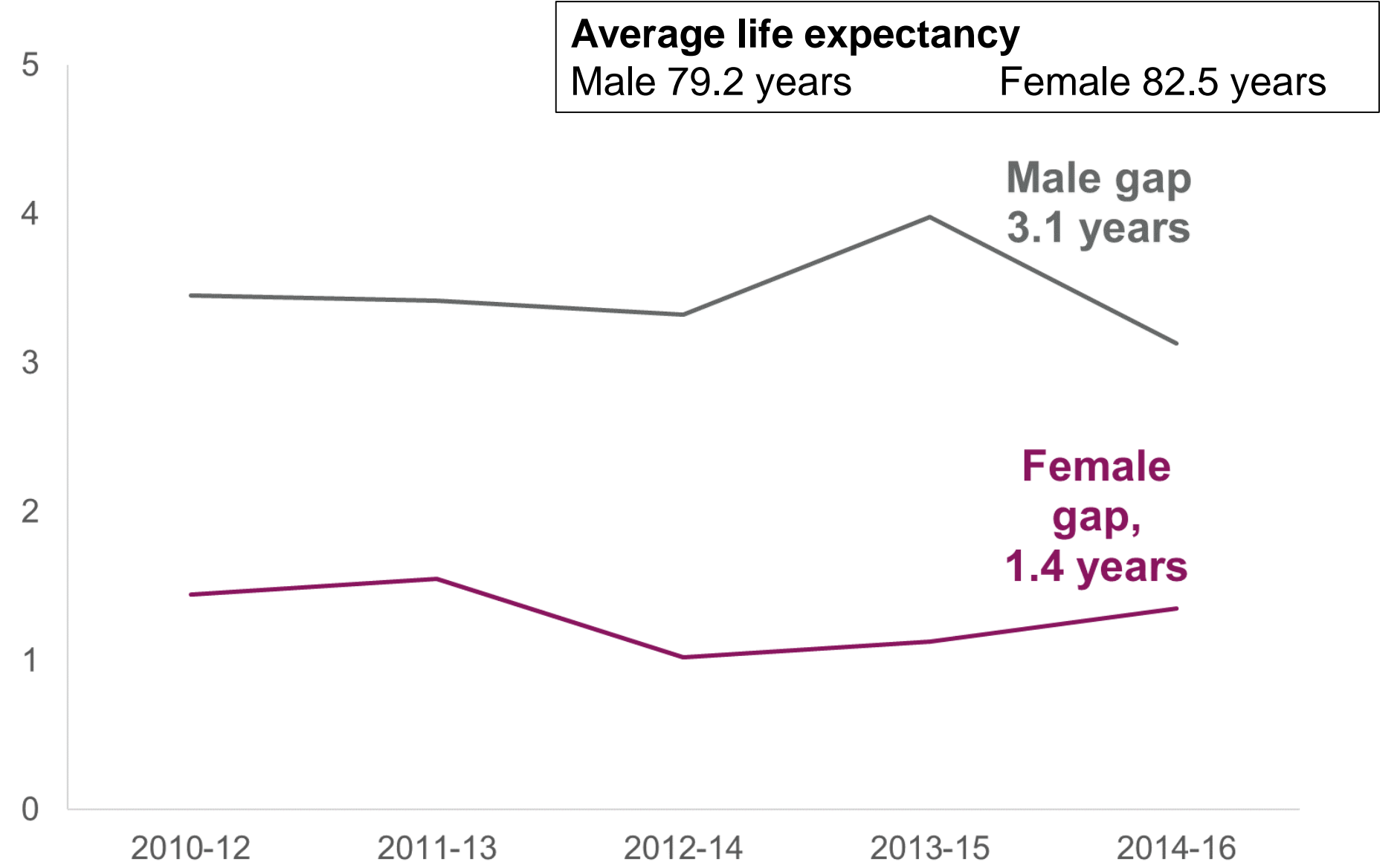
People are making positive lifestyle choices. They are more resilient and better equipped to cope with life's challenges.

POPULATION INDICATORS

- Gap in life expectancy between the most deprived areas and the borough overall.
- Number of preventable deaths per 100,000 population.
- Percentage of people who participate in sport or physical activity on at least one day a week.

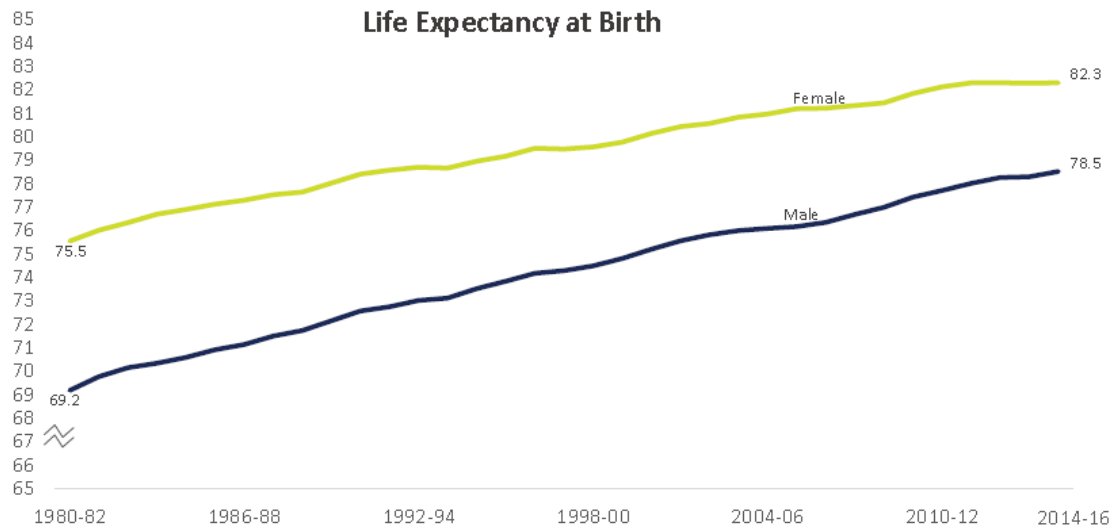
Gap in life expectancy between the most deprived areas and the borough overall

Armagh City, Banbridge & Craigavon



Life Expectancy at Birth

Northern Ireland



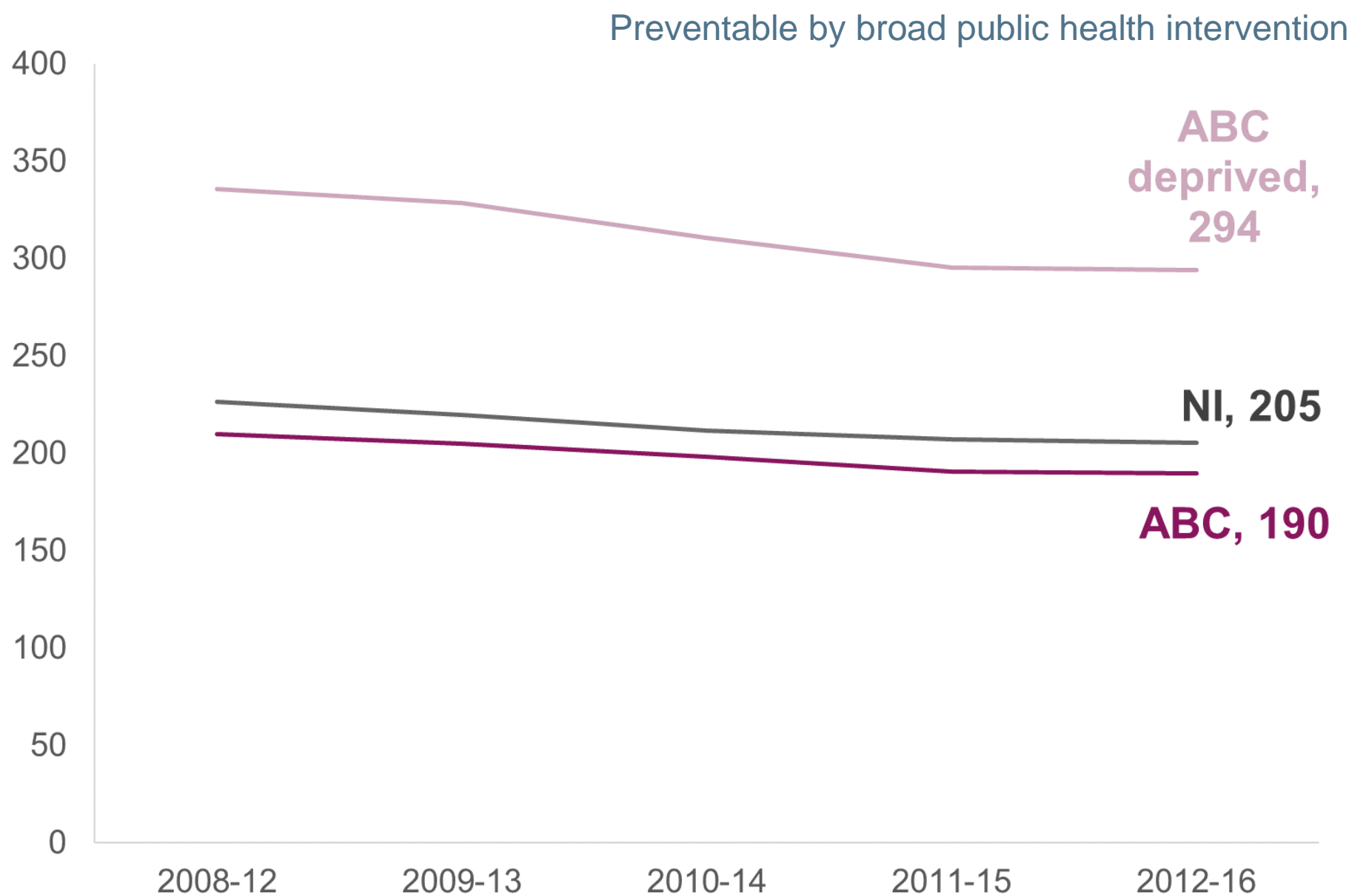
Healthy life expectancy

Estimates lifetime spent in “Very good” or “Good” health based on how individuals perceive their general health (Health Survey NI 2014-2016).

Northern Ireland	Healthy life expectancy	Gap most deprived and NI overall
Male	59.1 years	8.5 years
Female	60.9 years	8.2 years

Number of preventable deaths per 100,000 population

Armagh City, Banbridge & Craigavon and Northern Ireland



Number of preventable deaths per 100,000 population

District Electoral Areas, 2012-2016

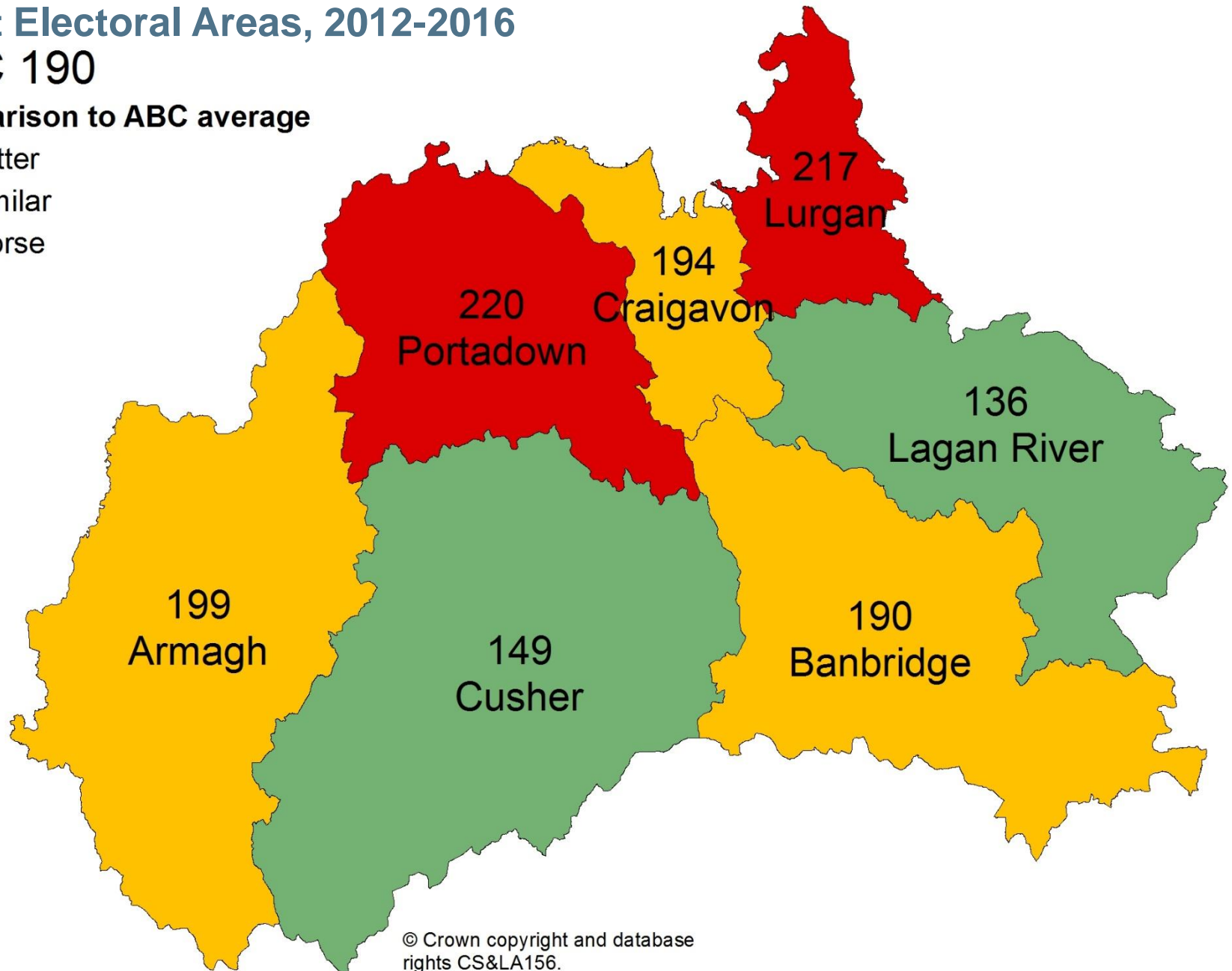
ABC 190

Comparison to ABC average

 Better

 Similar

 Worse

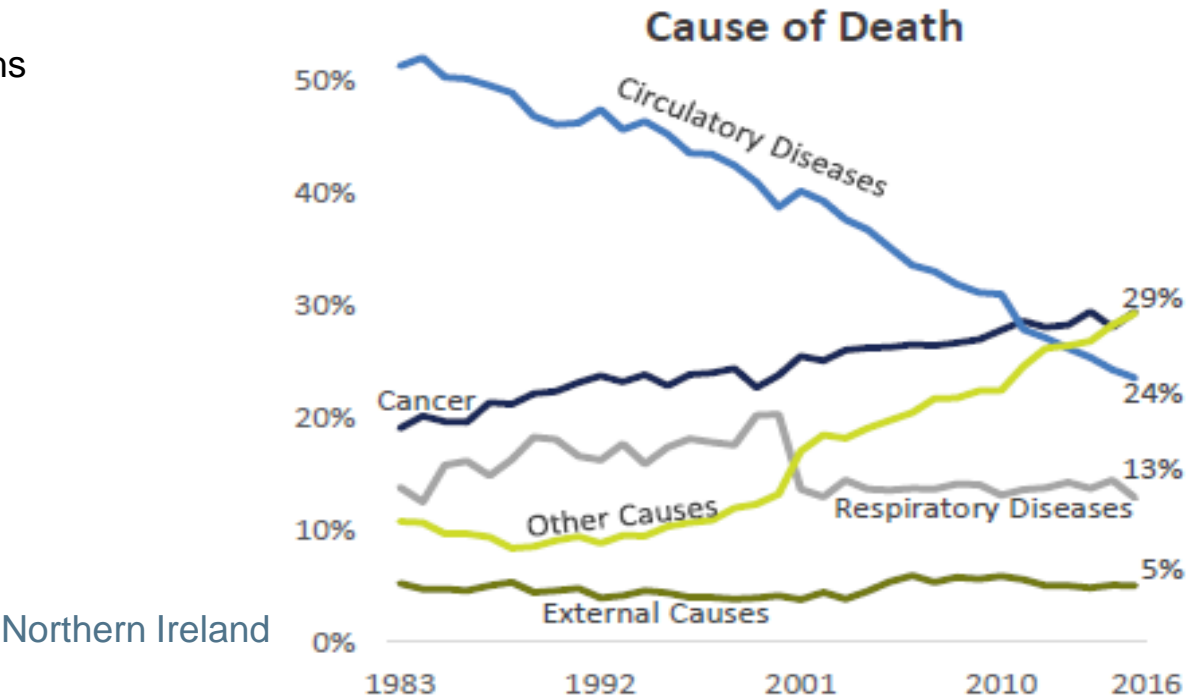


Causes of preventable deaths

	Males	Females	Total
Neoplasms*	317	314	631
Ischaemic heart disease	250	94	344
Suicide/Undetermined	126	35	161
Accidental	85	60	145
Chronic obstructive pulmonary disease	56	46	102
Alcohol Related	72	28	100
Diabetes	25	15	40
Transport Accident	27	10	37
DVT	12	11	23
Aortic aneurysm	15	6	21
Other causes	16	9	25

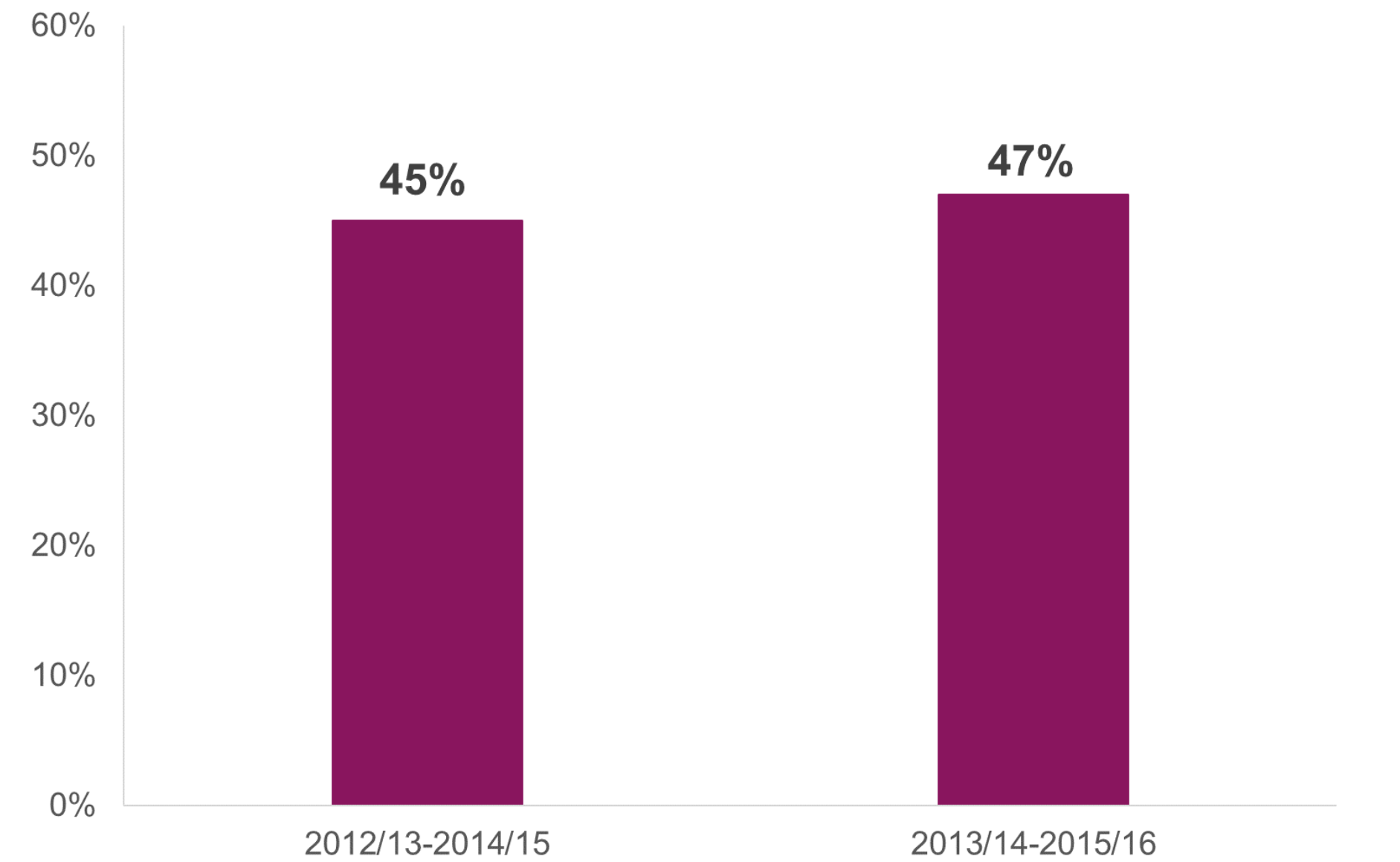
Armagh City, Banbridge & Craigavon (2011 – 2015)

* within neoplasms, leading cause
neoplasm of trachea/lung 277 total deaths



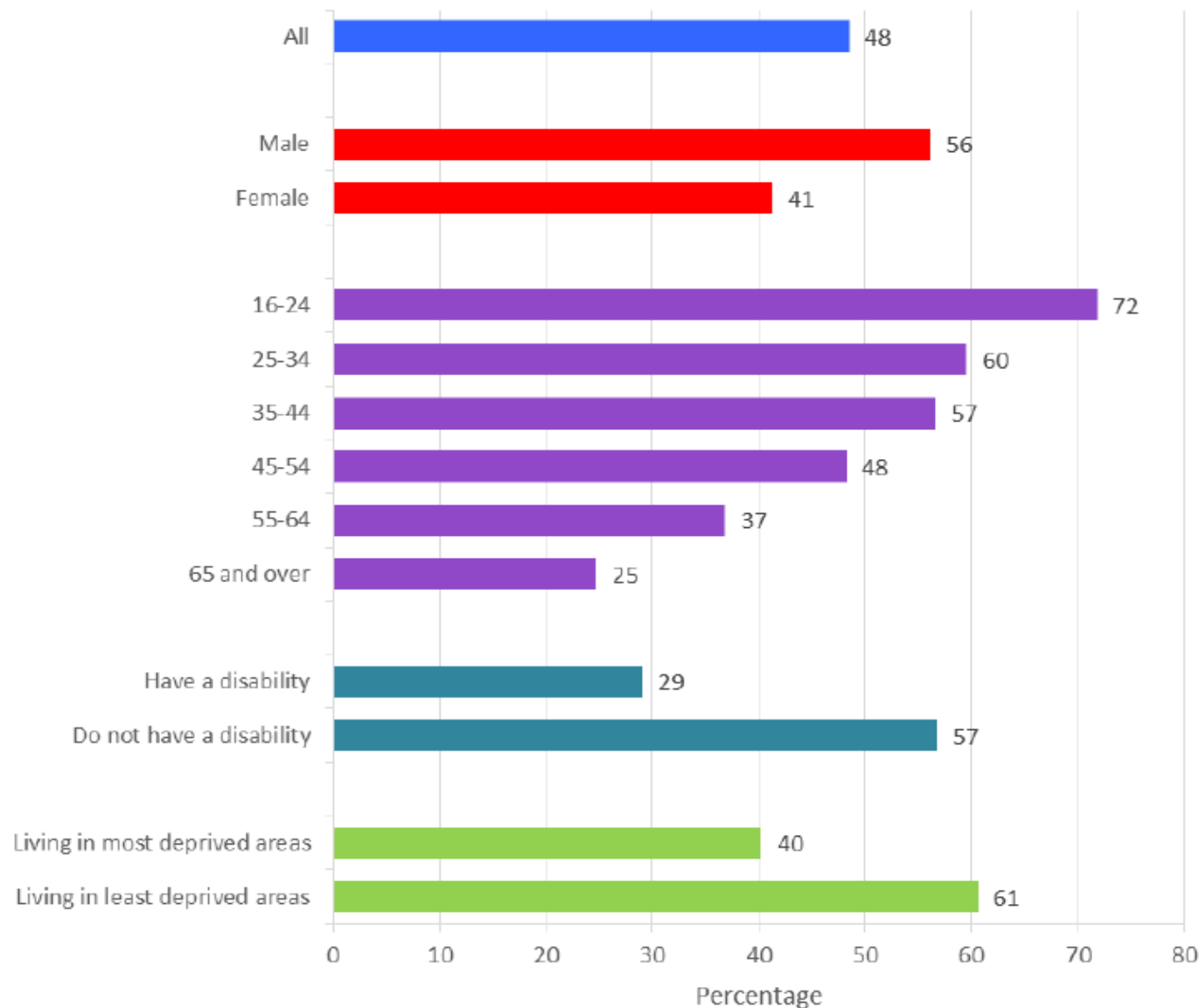
Percentage of people who participate in sport or physical activity on at least one day a week

Armagh City, Banbridge & Craigavon (2012/12 - 2014/15 and 2013/14 - 2014/15)



Percentage of people who participate in sport or physical activity on at least one day a week

Northern Ireland (2016/17)



All adults (48%)

Females (41%)

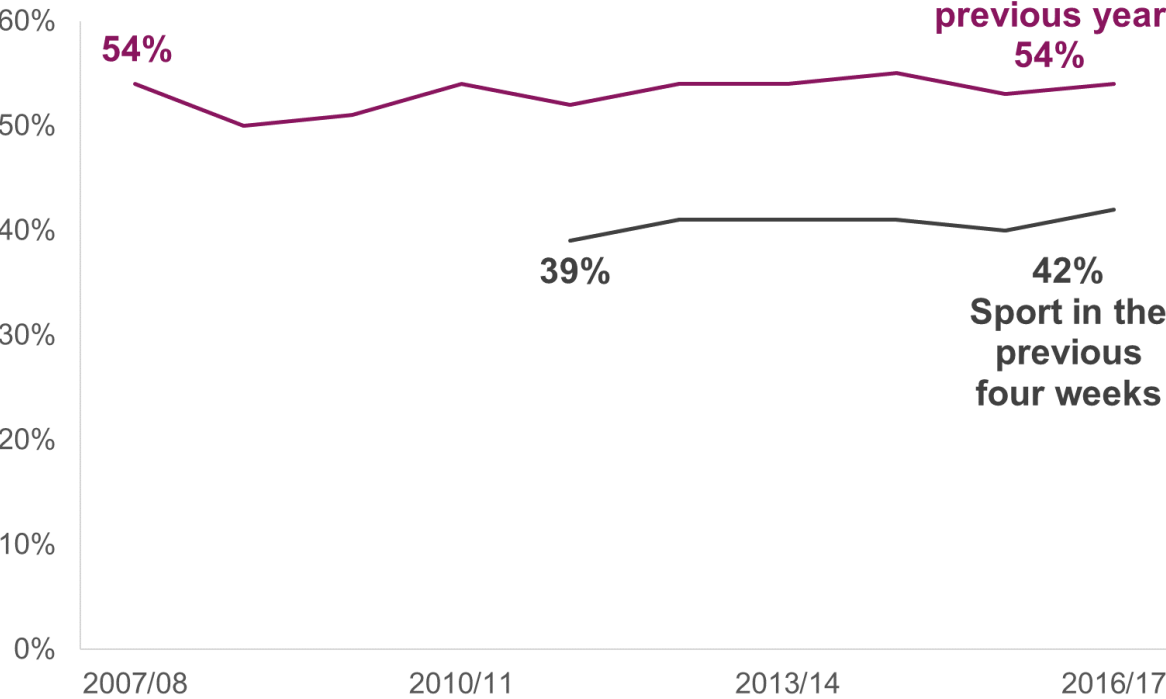
65+ (25%)

Have a disability (29%)

Most deprived areas (40%)

Sport participation Northern Ireland (2016/17)

Adults 16+



Young people (11-16)

2016	
Last year	Last week
99%	96%

Most popular within the previous 4 weeks



Keep fit,
Aerobics, Yoga,
Dance exercise
10%



Swimming
or diving
8%



Jogging
8%

Note - Walking for recreation 42%

Barriers

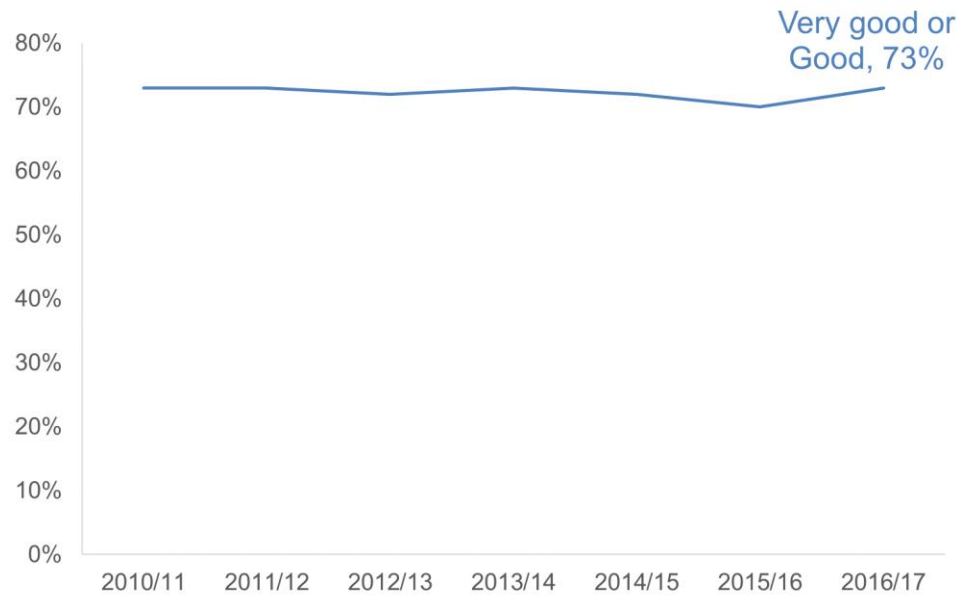
Time (34%)

Medical condition /
disability (19%)

I'm not fit / I get tired
easily (15%)

General health

Northern Ireland (2010/11 to 2016/17)



73% reported very good or good general health

Decline in general health rating with increasing age

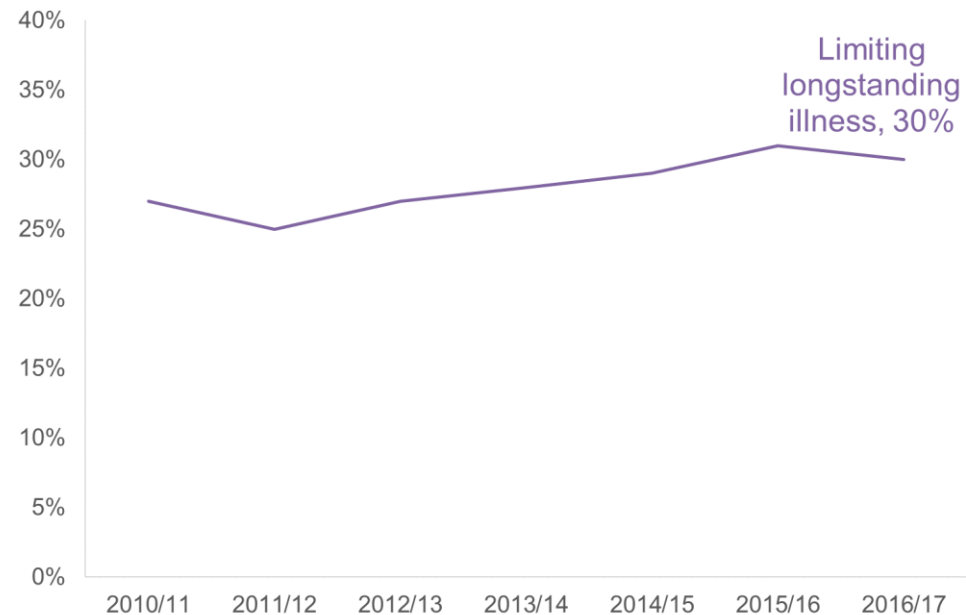
Most deprived areas 60%,
Least deprived areas 80%

30% reported a limiting longstanding illness

Females (33%) Males (27%)

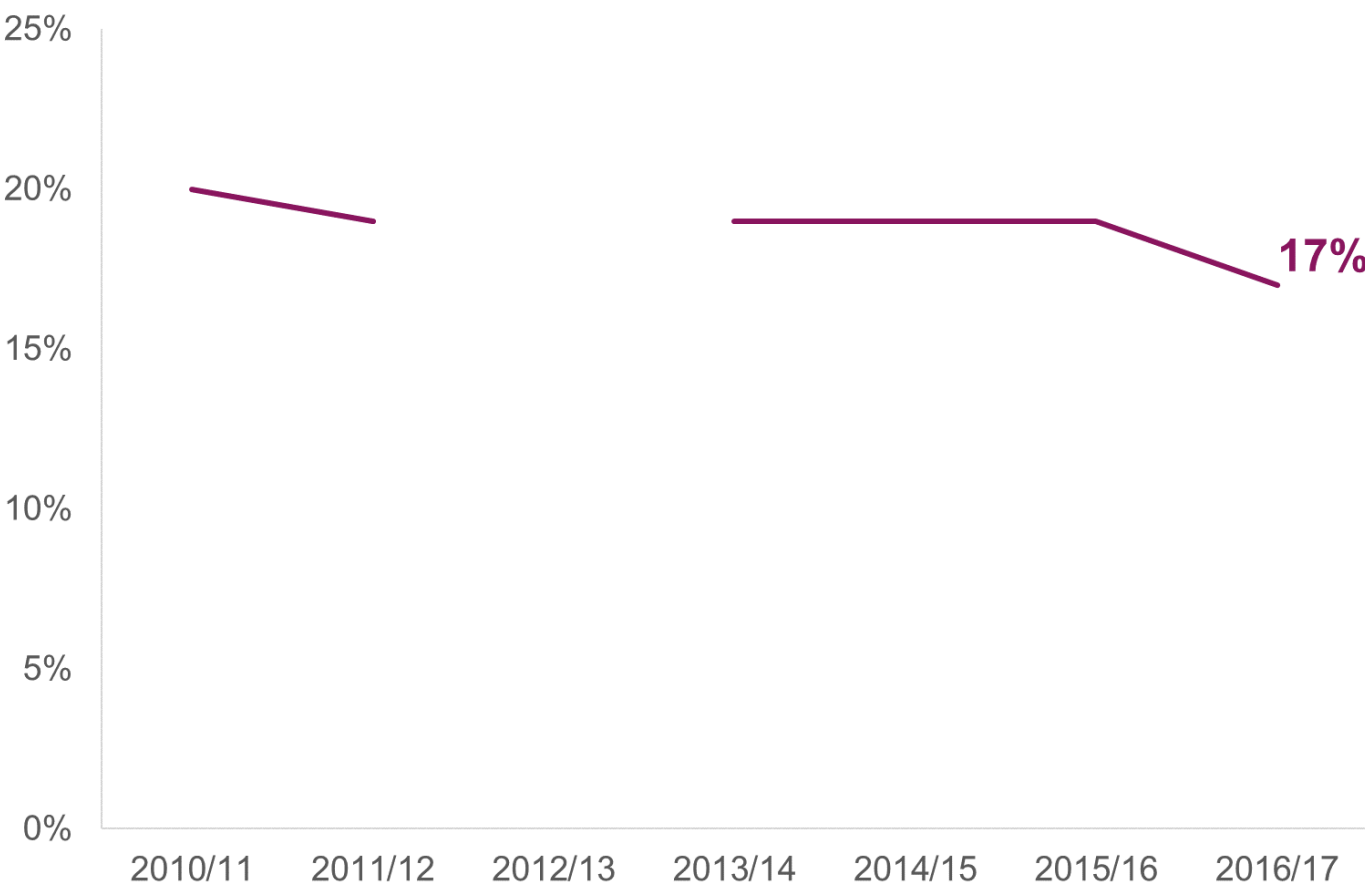
Older age-groups

Most deprived areas 42%
Least deprived areas 26%



Percentage of the population with possible mental health problem

Northern Ireland (2010/11 to 2016/17)



GHQ12 scores ≥ 4
Health Survey - NI

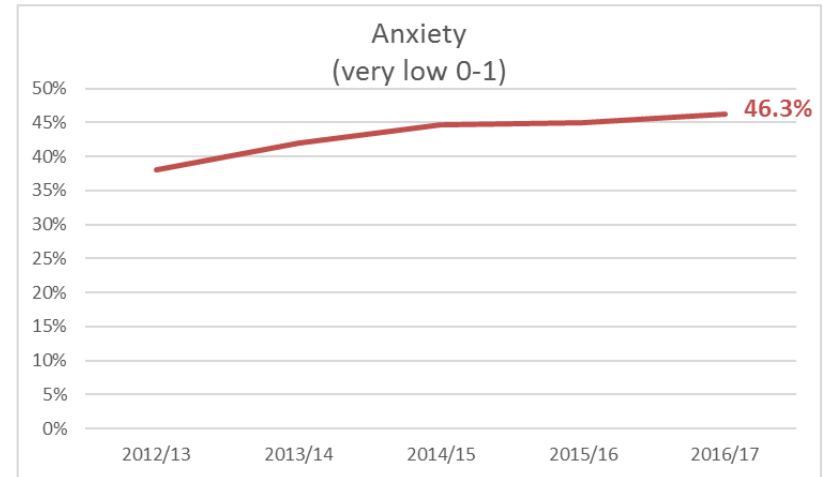
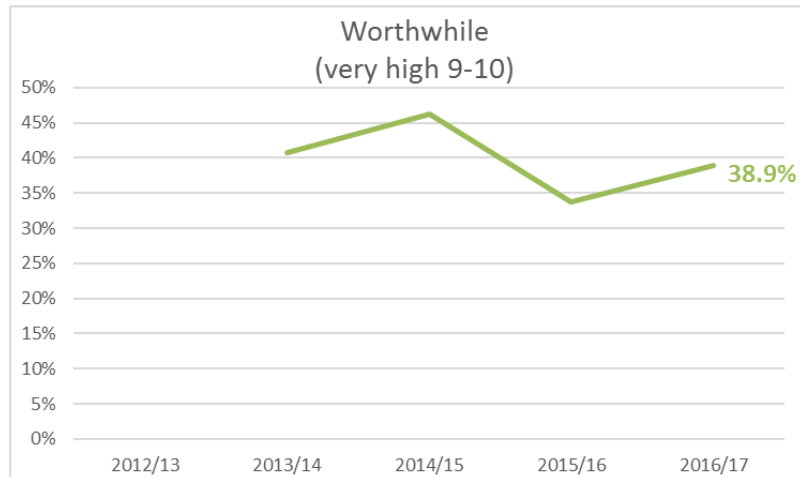
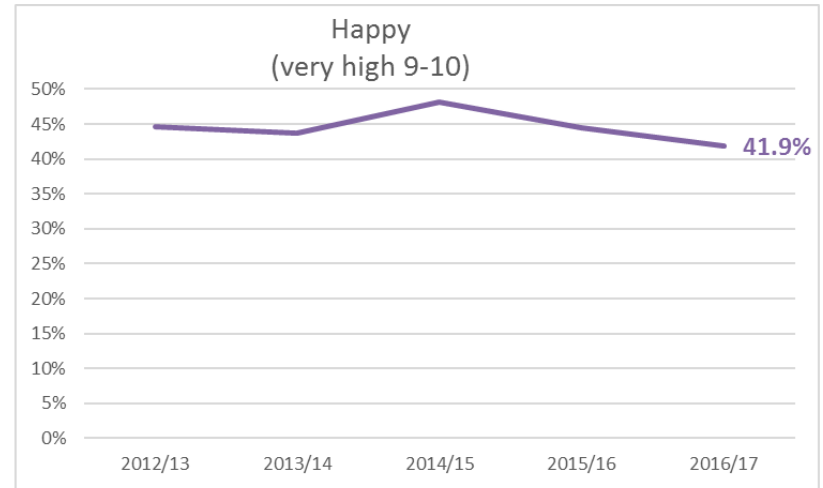
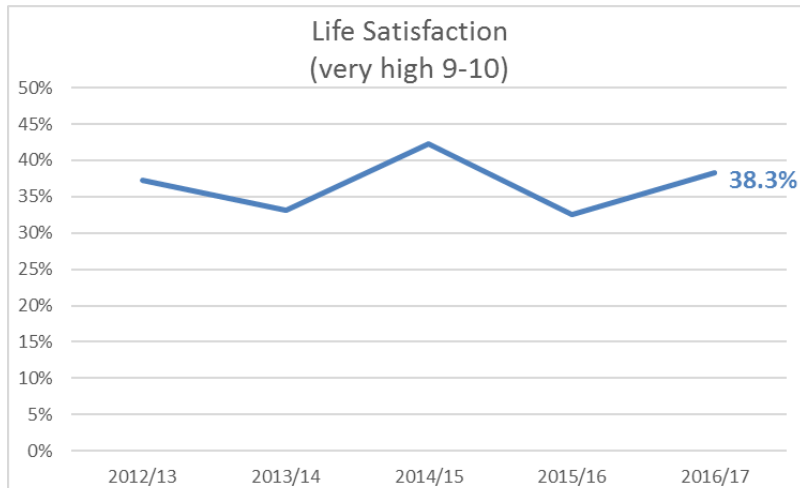
- Most deprived areas NI (27%) (2016/17)
- Southern Trust (13%) (2016/17)
- Limiting long-standing illness (37%) (2015/16)

2016
Scotland 15%
England 19%

Personal wellbeing

- Overall, how satisfied are you with your life nowadays?
- Overall, to what extent do you feel the things you do in your life are worthwhile?
- Overall, how happy did you feel yesterday?
- Overall, how anxious did you feel yesterday?

Armagh City, Banbridge & Craigavon (2012/13 to 2016/17)



Projected population change by age

Armagh City, Banbridge & Craigavon (2016 to 2026)

All ages

18,600 people

up 9%

Children (0-15)

2,300 people

up 5%

Working Age (16-64)

7,600 people

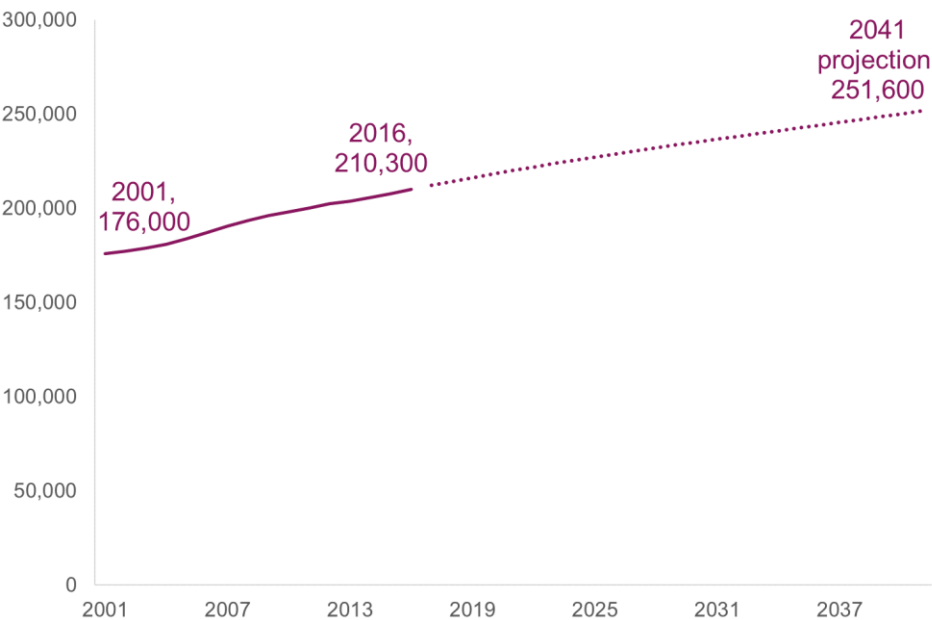
up 6%

Older people (65+)

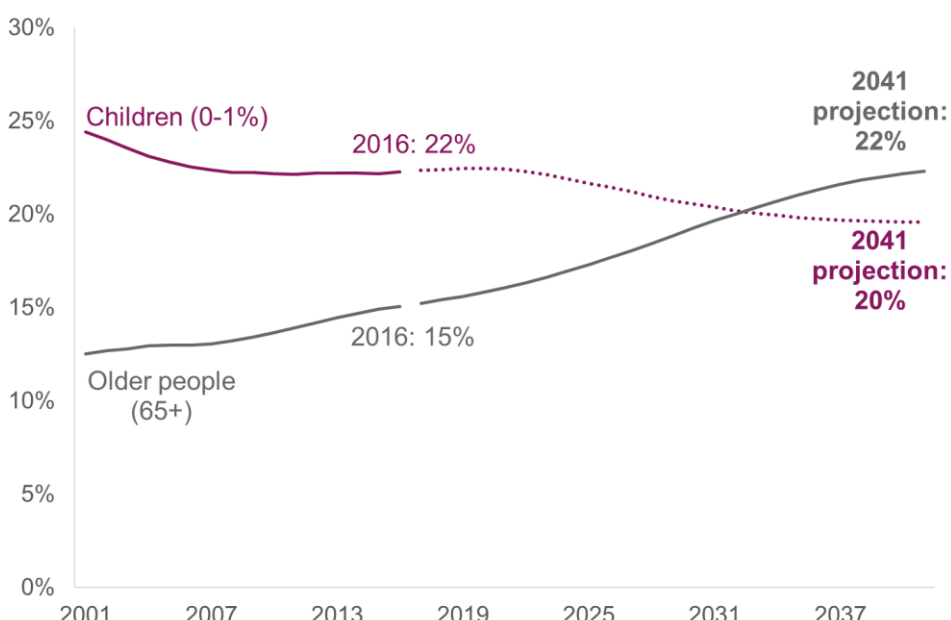
8,700 people

up 28%

Total population



Older people (65+) and Children (0-15)



Health Inequalities

Armagh City, Banbridge & Craigavon



Health Outcomes were worse than NI average



Health Outcomes were similar to NI average



Health Outcomes were better than NI average

Largest Inequality Gaps

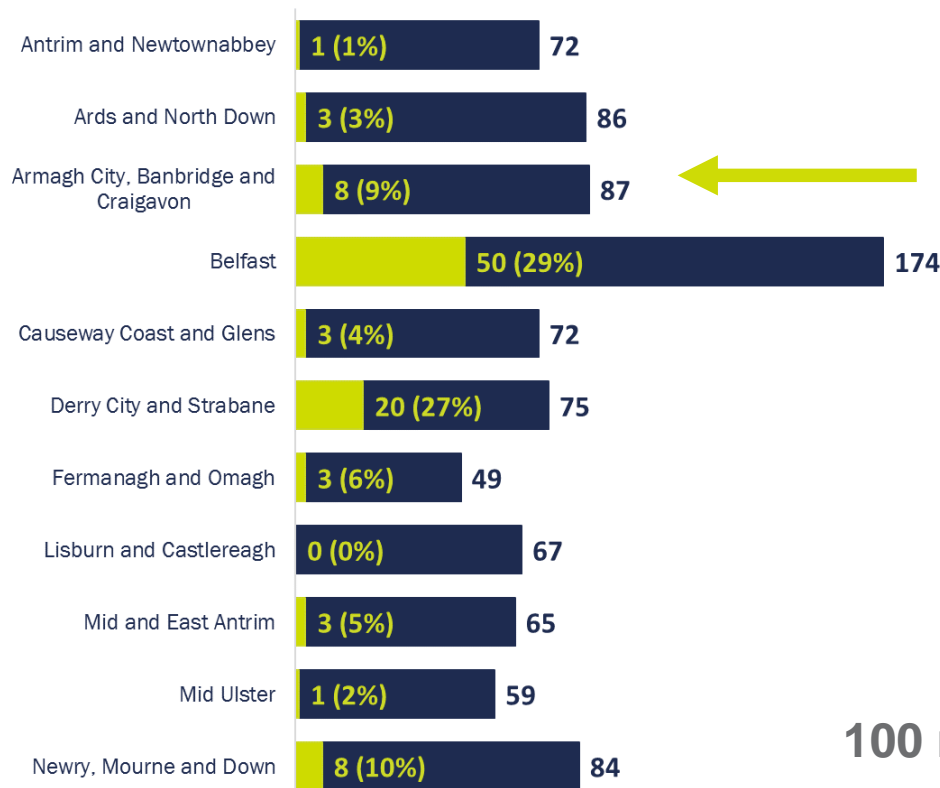
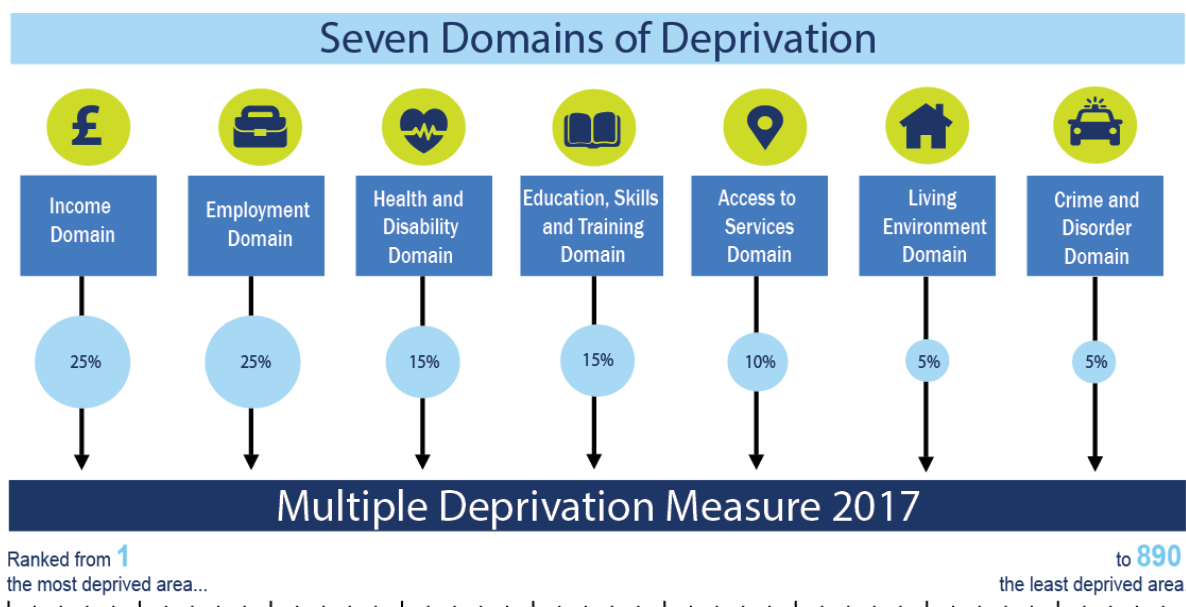
Borough and Most Deprived areas in Borough

SAR Self-Harm (102%)	Teenage Birth Rate U20 (96%)	SAR Alcohol Related (94%)	SAR Alcohol Specific (94%)	SAR Drug Related (90%)
-------------------------	---------------------------------	------------------------------	-------------------------------	---------------------------

Deprivation (2017)

Spatial measure

Super Output Areas
average population
= 2,100

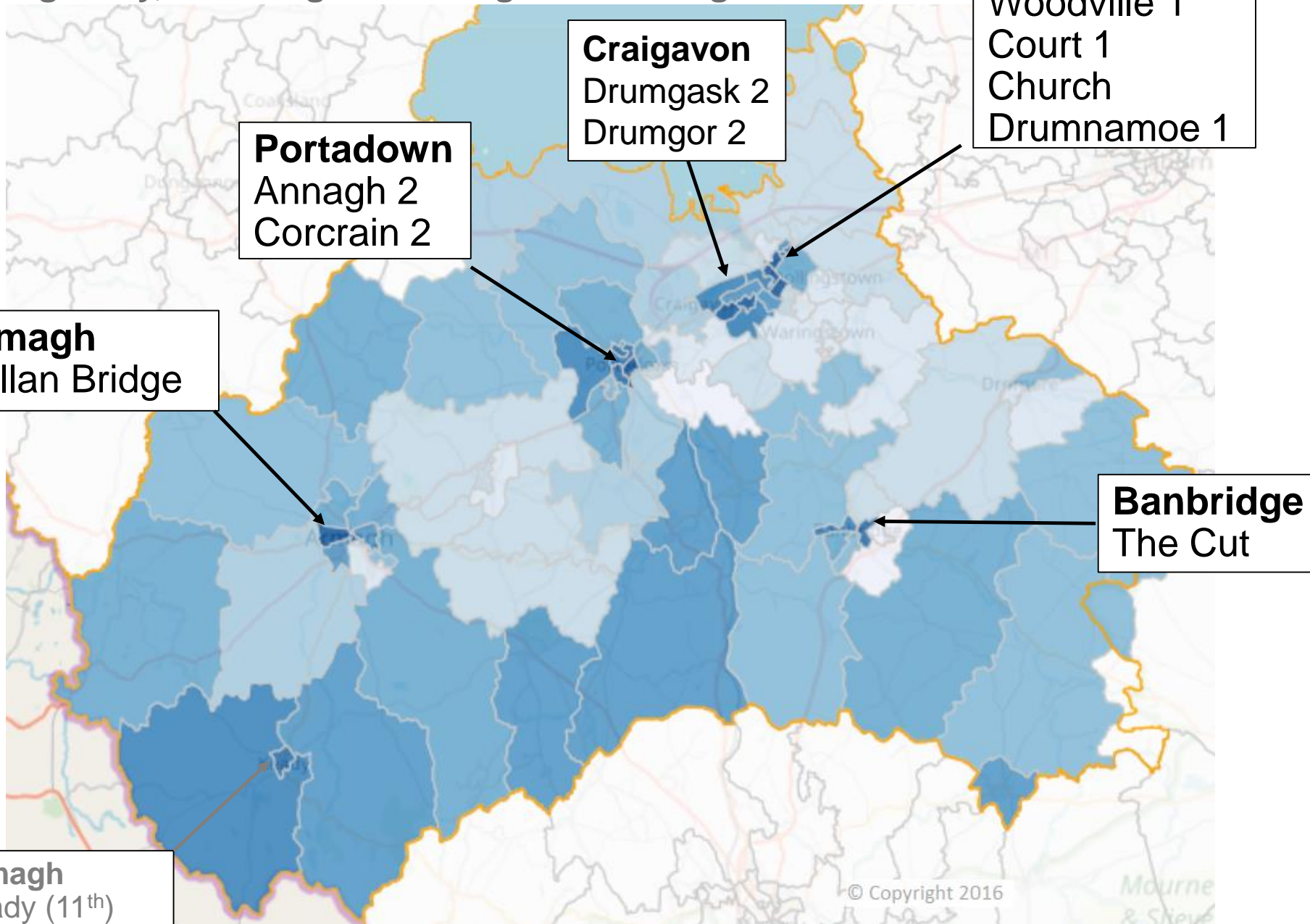


8 out of 87 (9%) ABC

100 most deprived SOAs in NI by LGD

Multiple Deprivation Measure 2017

Armagh City, Banbridge and Craigavon Borough



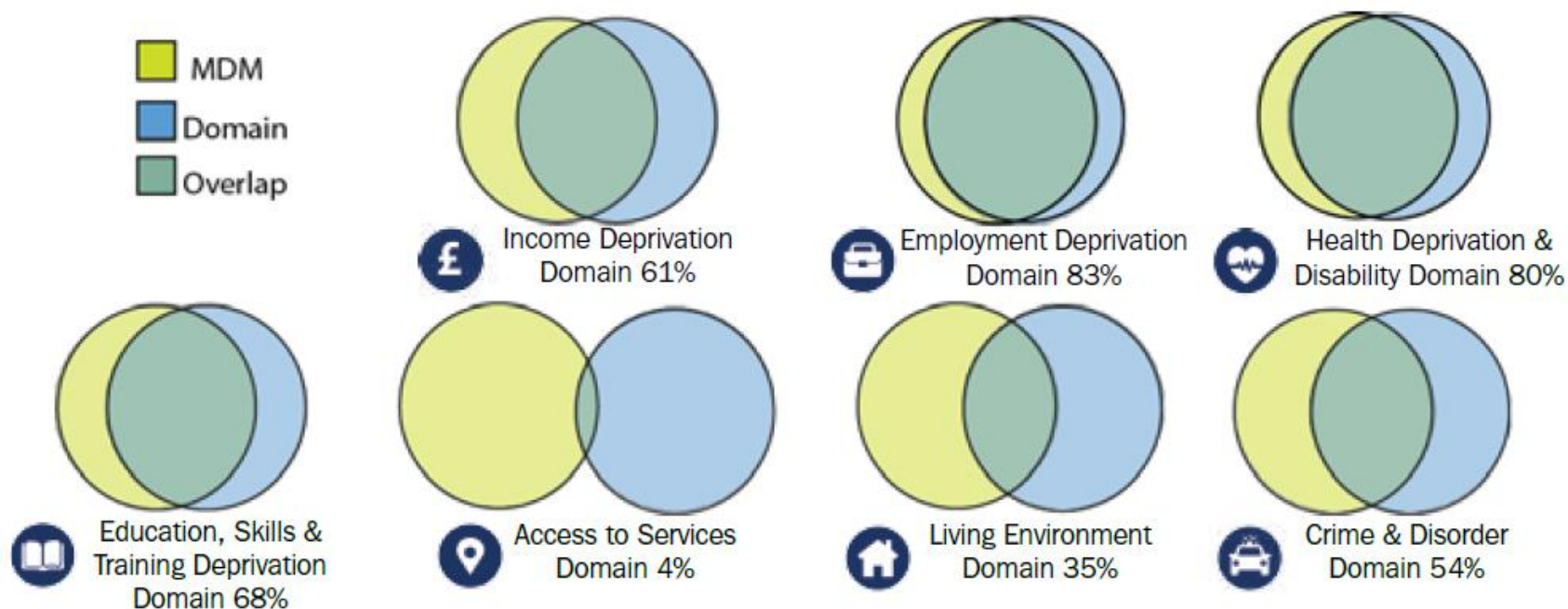
Top 10 most deprived areas in Armagh City, Banbridge & Craigavon Borough

Multiple Deprivation Measure 2017

2017		2010		2005	
MDM	SOA	MDM	SOA	MDM	SOA
14	Woodville 1	31	Drumnamoe 1	41	Drumgask 2
52	Drumgask 2	34	Drumgask 2	63	Drumnamoe 1
54	Court 1	55	Drumgor 2	65	Corcrain 2
61	Callan Bridge	92	Woodville 1	74	Drumgor 2
62	Church	99	Court 1	87	Court 1
73	Annagh 2	106	Callan Bridge	118	Woodville 1
81	Drumgor 2	119	Corcrain 1	119	Drumgask 1
83	Drumnamoe 1	129	Drumgask 1	124	Corcrain 1
108	Corcrain 2	144	Court 2	128	Callan Bridge
120	The Cut	152	Corcrain 2	130	Court 2

Comparison across domains (MDM) - NI

- The circles below depict the overlap between the MDM and the individual domains
- The overlap represents the number of SOAs that have a rank in the top 100 for both the MDM and the relevant domain
- For example, 61 of the 100 most deprived SOAs based on the MDM are also in the 100 most deprived SOAs according to the Income Domain



10 most deprived SOAs in borough

Most deprived SOAs within ARMAGH CITY, BANBRIDGE AND CRAIGAVON LGD



INCOME

Rank

9	Woodville 1
17	Church
19	Annagh 2
22	Keady
38	Callan Bridge
46	Derrynoose
86	Corcrain 2
93	Carrigatuke
100	Corcrain 1
105	Court 1



EMPLOYMENT

Rank

42	Drumnamoe 1
59	Woodville 1
67	Drumgask 2
69	Court 1
92	Court 2
98	Callan Bridge
107	Drumgor 2
119	The Cut
147	Corcrain 1
170	Edenderry



HEALTH AND DISABILITY

Rank

31	Drumnamoe 1
42	Drumgask 2
64	Drumgor 2
67	Court 1
91	Woodville 1
100	Court 2
121	Callan Bridge
124	Drumgask 1
130	The Cut
145	Edenderry



EDUCATION, SKILLS AND TRAINING

Rank

21	Woodville 1
24	Drumgask 2
33	Church
37	Drumgor 2
62	Drumnamoe 1
68	Court 1
81	Corcrain 2
82	Ballybay
93	Tavanagh
97	Callan Bridge



ACCESS TO SERVICES

Rank

18	Bannside
33	Katesbridge
54	Derrynoose
64	Gransha
73	Derrytrasna 2
89	Killylea
96	The Birches 2
98	Quilly
100	Carrigatuke
101	Poyntz Pass



LIVING ENVIRONMENT

Rank

10	Woodville 1
15	Annagh 2
58	Court 1
69	The Cut
70	Corcrain 2
83	The Mall
92	Callan Bridge
146	Drumnamoe 1
151	Carrigatuke
163	Milford



CRIME AND DISORDER

Rank

7	Court 1
15	The Cut
26	Drumgor 2
27	Woodville 1
42	Annagh 2
69	Callan Bridge
97	Court 2
104	Church
125	Drumgor 1
132	Edenderry

MDM

MULTIPLE DEPRIVATION

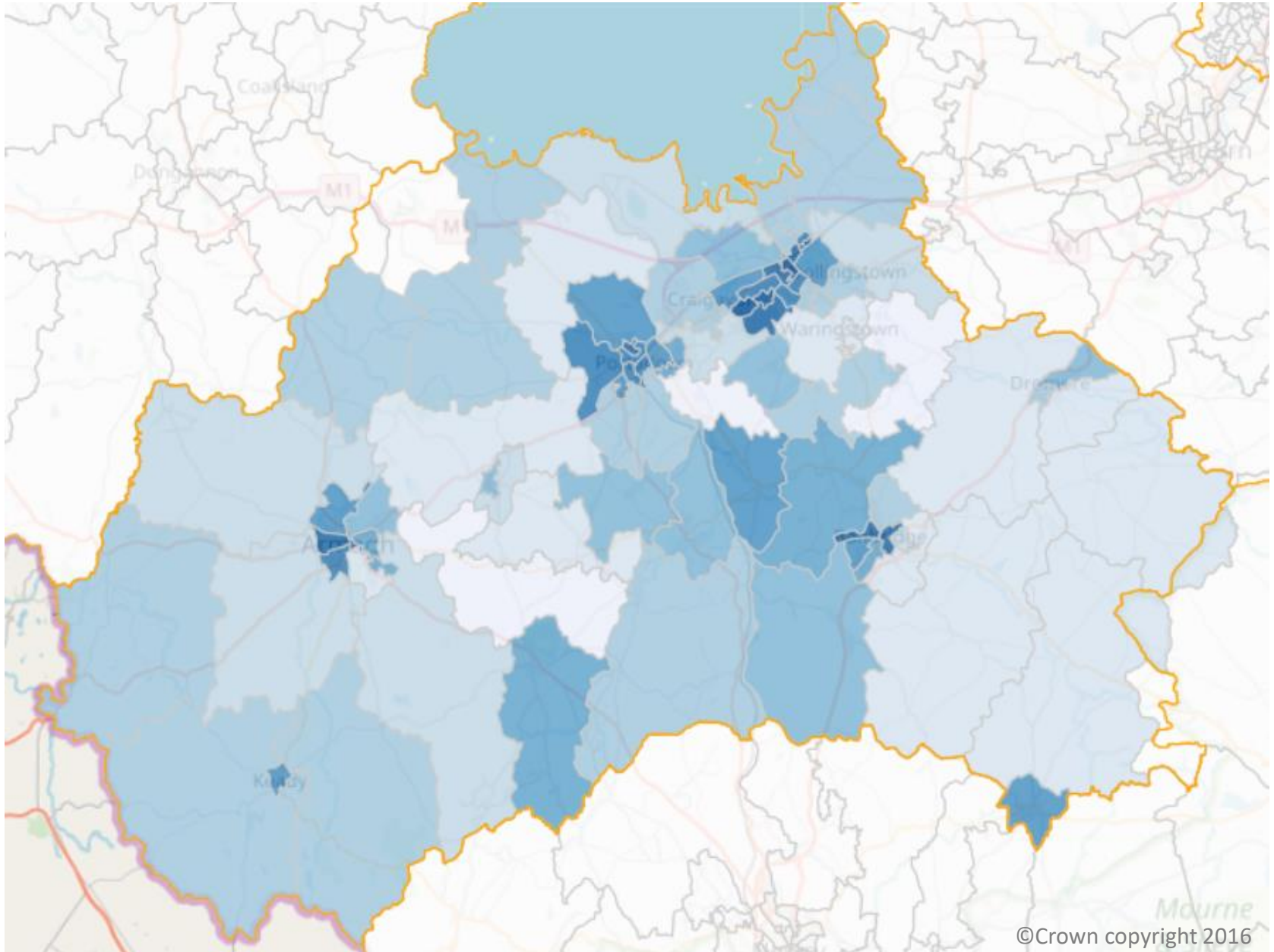
Rank

14	Woodville 1
52	Drumgask 2
54	Court 1
61	Callan Bridge
62	Church
73	Annagh 2
81	Drumgor 2
83	Drumnamoe 1
108	Corcrain 2
120	The Cut

For each domain, as well as the overall multiple measure the 890 SOAs in NI are ranked from 1 (most deprived) to 890 (least deprived).

Health Deprivation and Disability

Armagh City, Banbridge and Craigavon Borough



Health Deprivation and Disability Comparison within domain

Indicator ranks (where 1 most deprived)	Drumnamoe 1	Drumgask 2
Health Deprivation and Disability Domain Rank	31	42
Standardized preventable death ratio (excluding Suicides)	27	311
Standardized physical health-related benefit ratio	24	31
Standardized ratio of people registered as having cancer (excluding non-melanoma skin cancers)	3	342
Standardized emergency admission ratio	68	198
Proportion of Singleton Births with Low Birth Weight	496	55
Standardized ratio of Children’s Dental Extractions	30	14
Standardized ratio of people on multiple prescriptions on a regular basis	5	11
Standardized ratio of people with a long-term health problem or disability (Excluding Mental Health problems)	27	11
Combined Mental Health Indicator*	57	74

* Includes five indicators

Community Plan EQIA

- **Religious Belief/Political Opinion** - Self-reported general health, Catholics more likely to assess their health as bad or very bad, differences more noticeable in older age groups (Census 2011).
- **Racial Group** - Health status of Travellers much poorer than that of general population. (All Ireland health study, University of Dublin, 2010).
- Some health issue and risks are more prevalent in certain nationalities and cultures (e.g. diabetes) (PHA good practice guide for BME)
- **Lack of data for some categories** – sexual orientation
- **Multiple identities**

FOR MORE INFORMATION

Get in contact with Community Planning Team

Email:

Communityplanning@armaghbanbridgecraigavon.gov.uk

Tel: 028 4066 0644

Web Updates at:

www.armaghbanbridgecraigavon.gov.uk/community-planning

