

ARMAGH CITY TOWNSCAPE HERITAGE 3D SKETCH PRIMARY SCHOOL PROJECT

As part of the Armagh City Townscape Heritage scheme, educational activities are being delivered, one of which is a Primary school project.

The purpose of the 3D Sketch Project is twofold:

1. To develop Pupils awareness of the built environment
2. To enhance Pupils sketching skills as part of their curriculum.

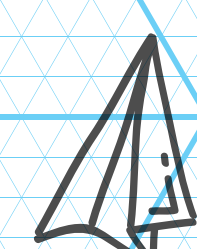
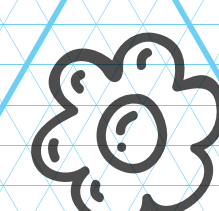
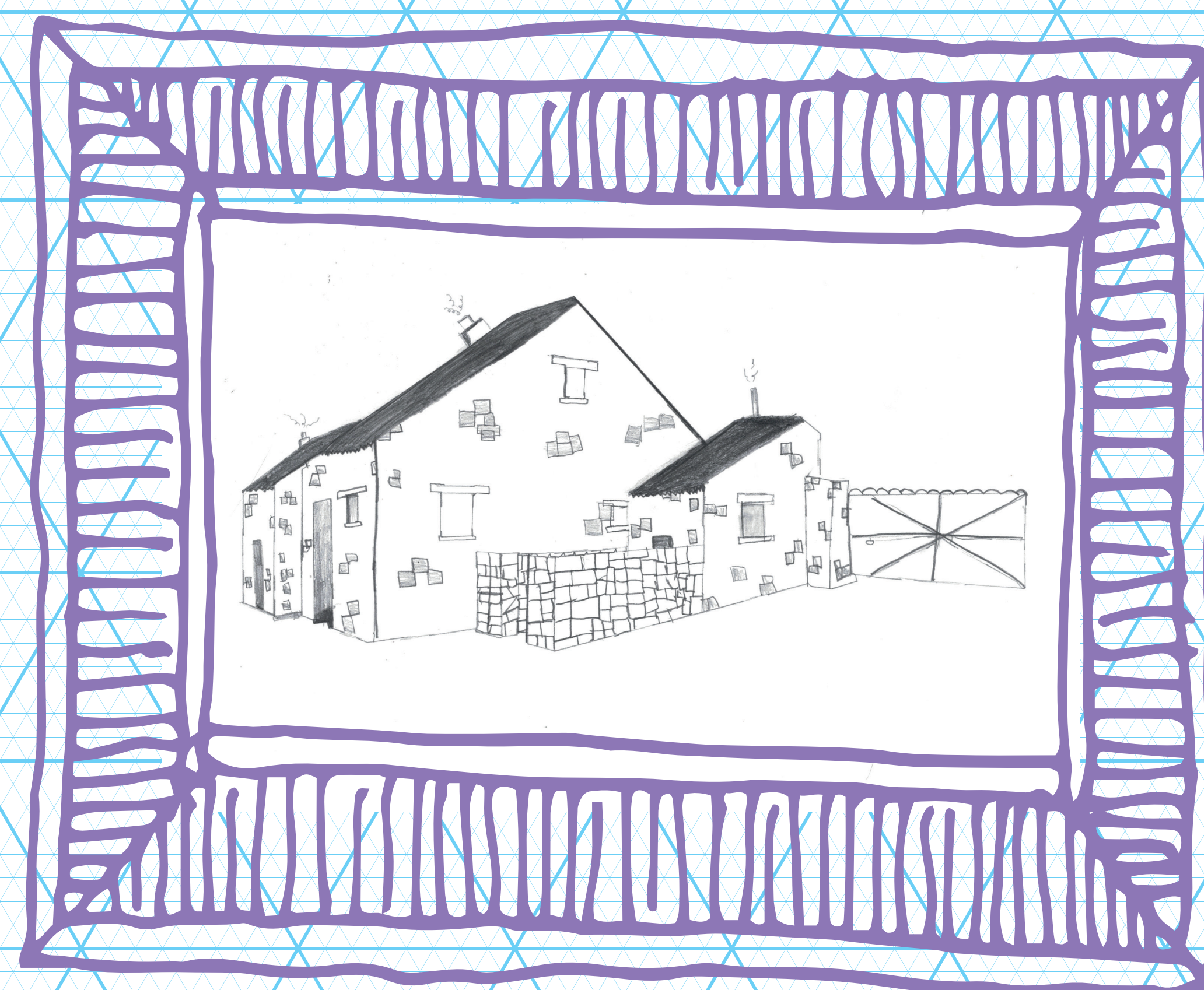
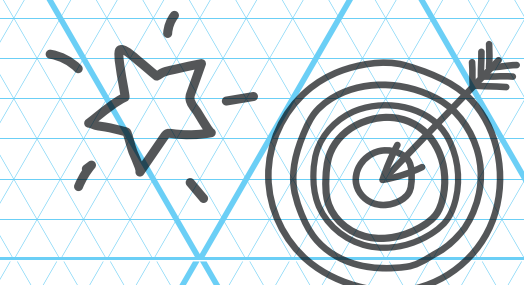
A number of sessions with P6 and P7 students are taking place and to assist pupils stencils were developed for more complex sketches such as fireplaces, staircases and Georgian doors. While the main focus was on the local Georgian architecture in Armagh City, we also looked at functional design of housing down through the years. The school groups also had an opportunity to visit the built heritage around Armagh City.

Currently the two Primary schools involved are Mount St Catherine's and the Armstrong Primary School and the project is being rolled out to further schools over the 5yr duration of the Armagh City TH.

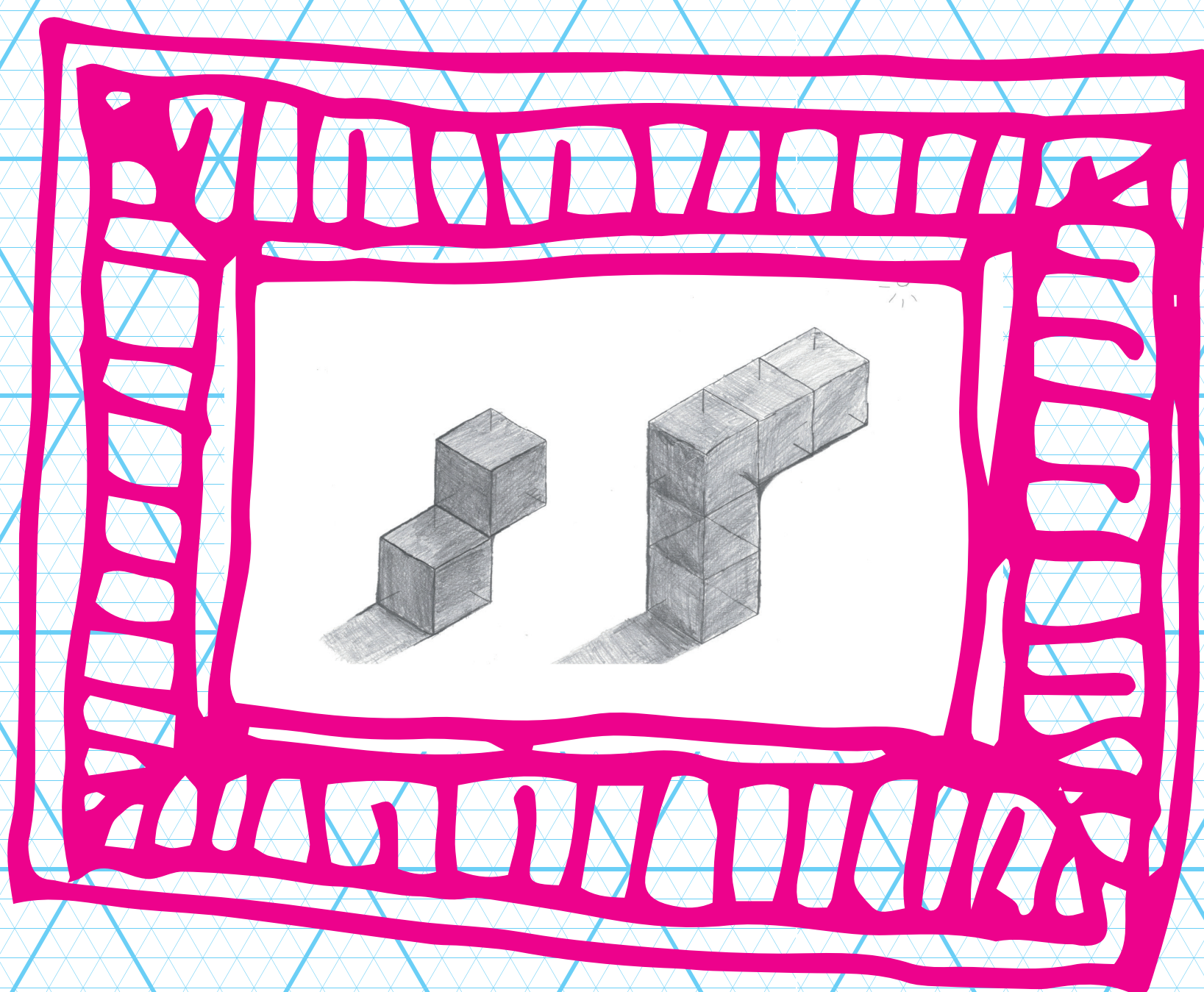
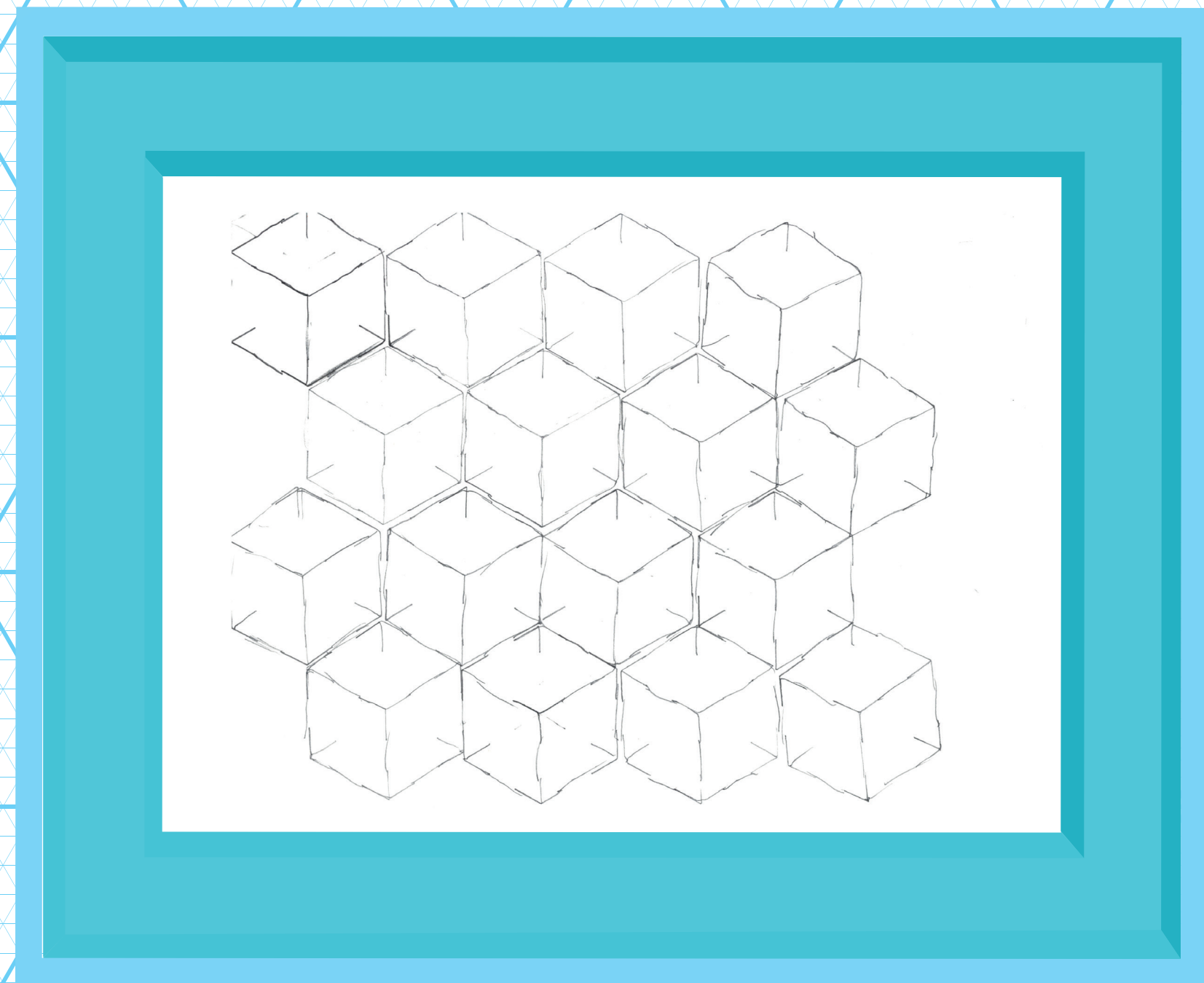
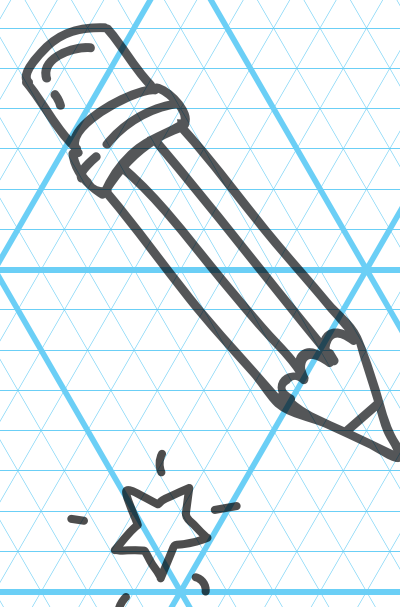
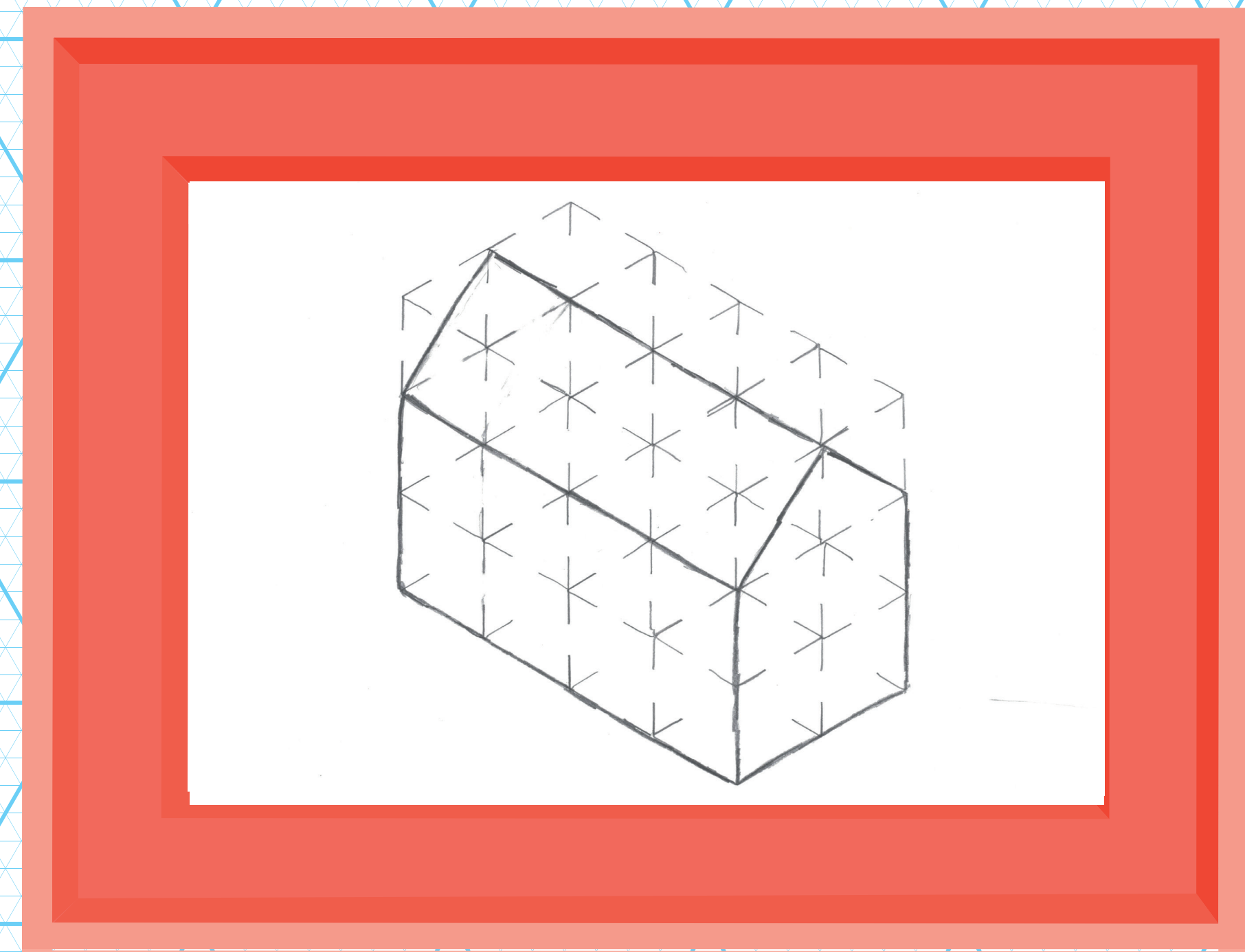
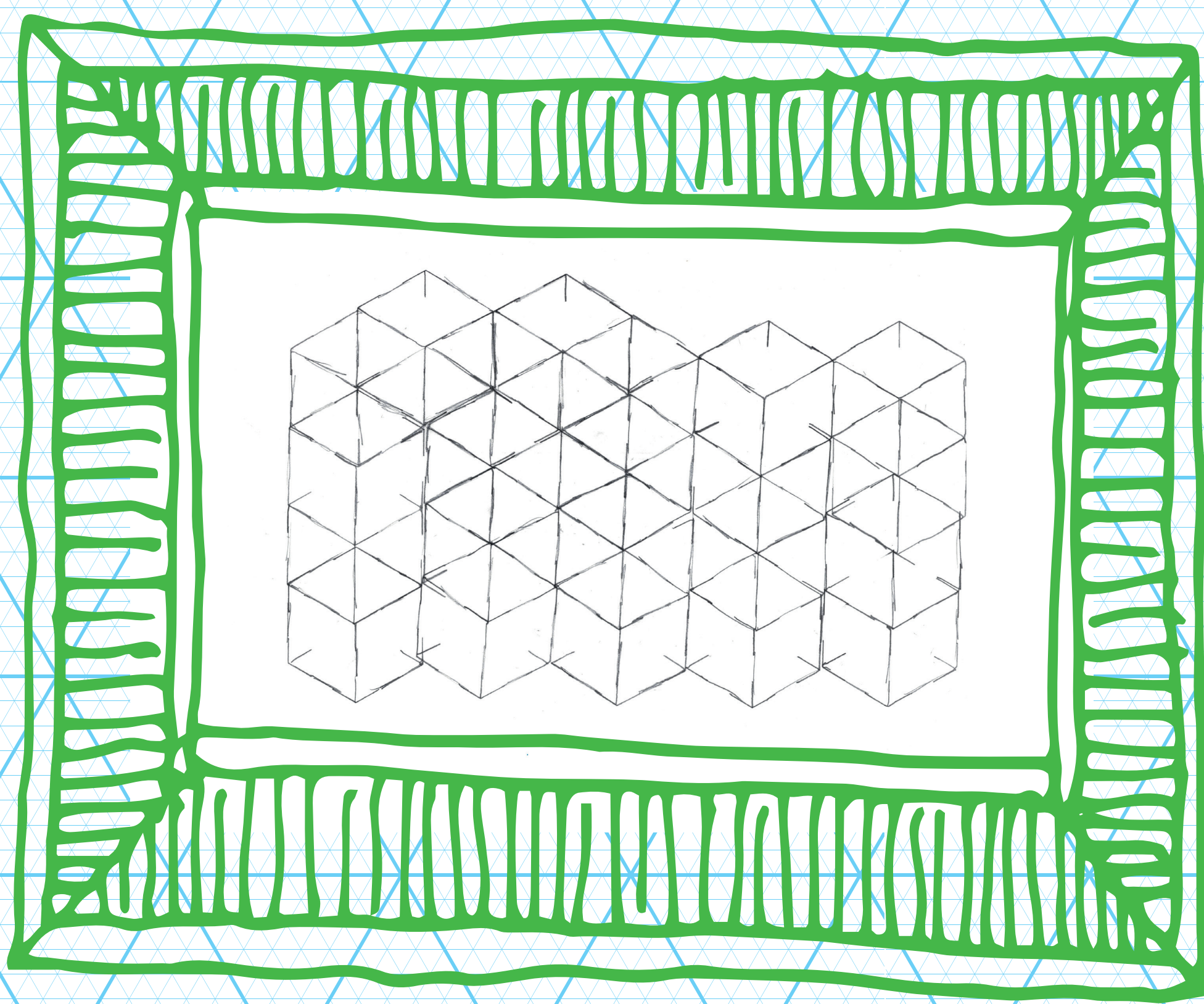
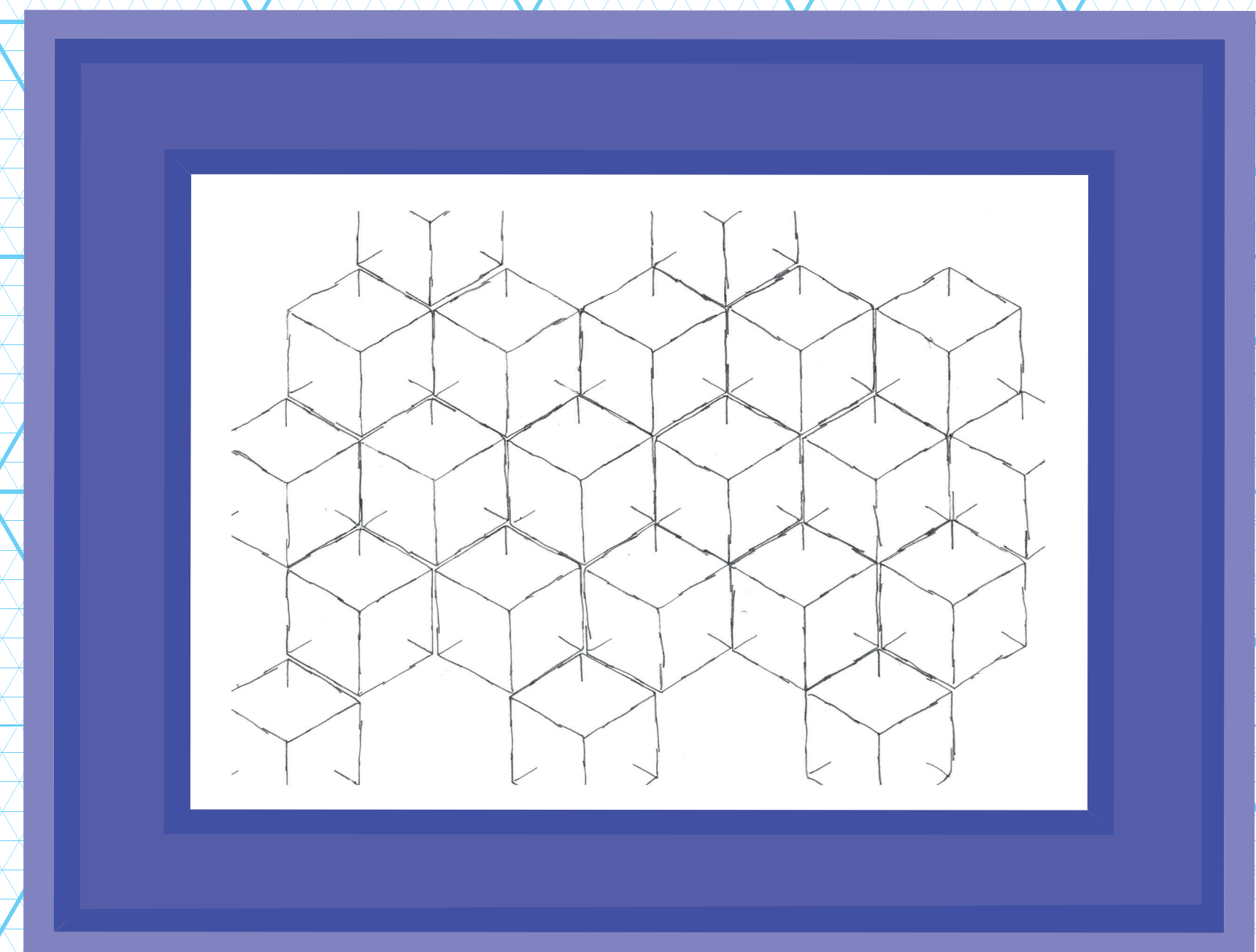
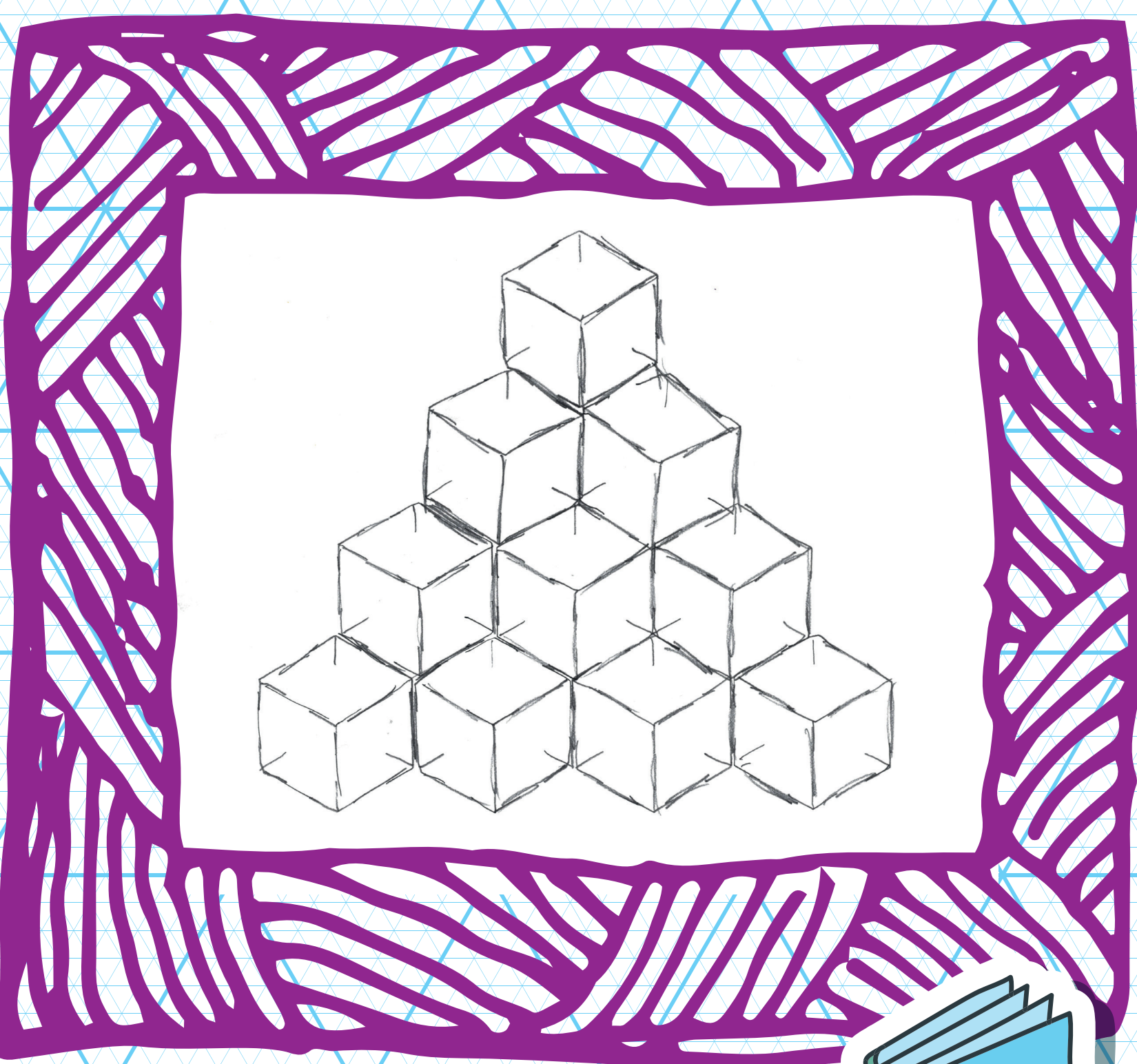
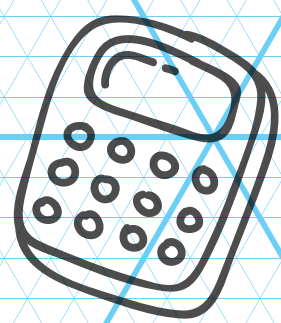
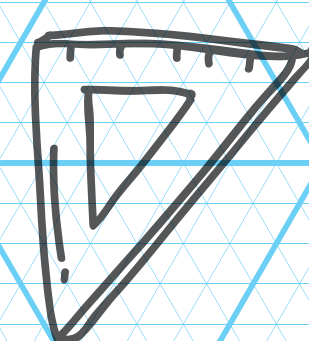
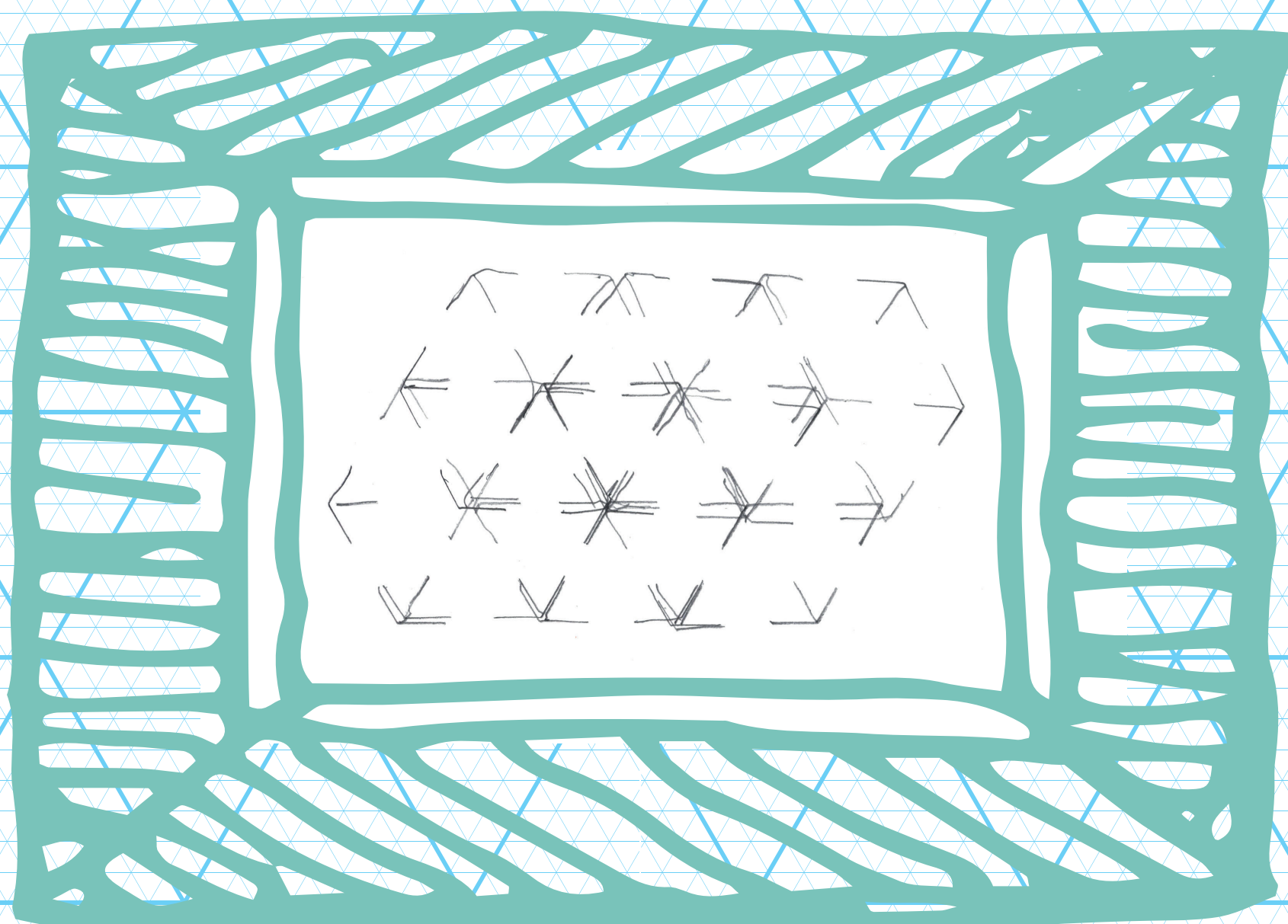
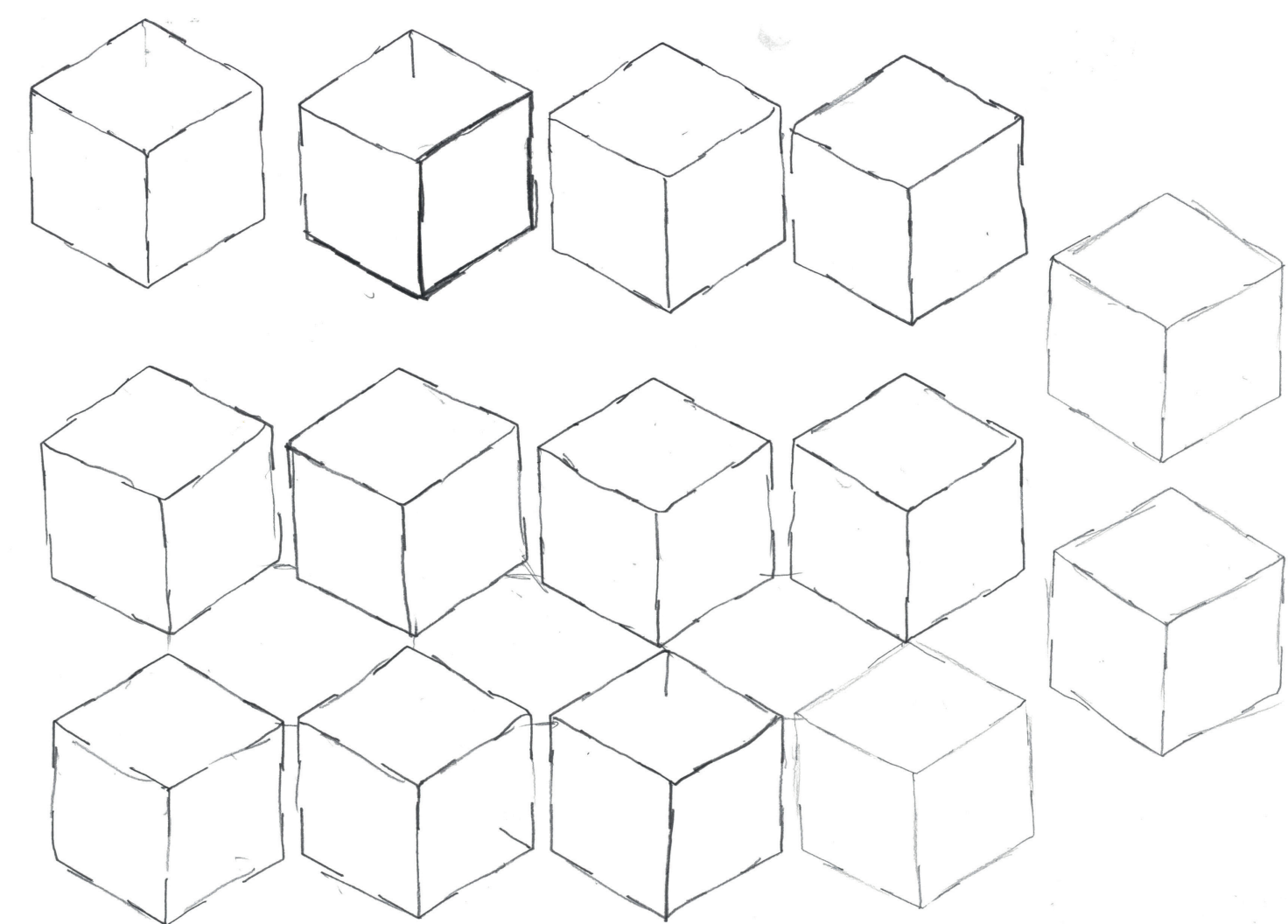
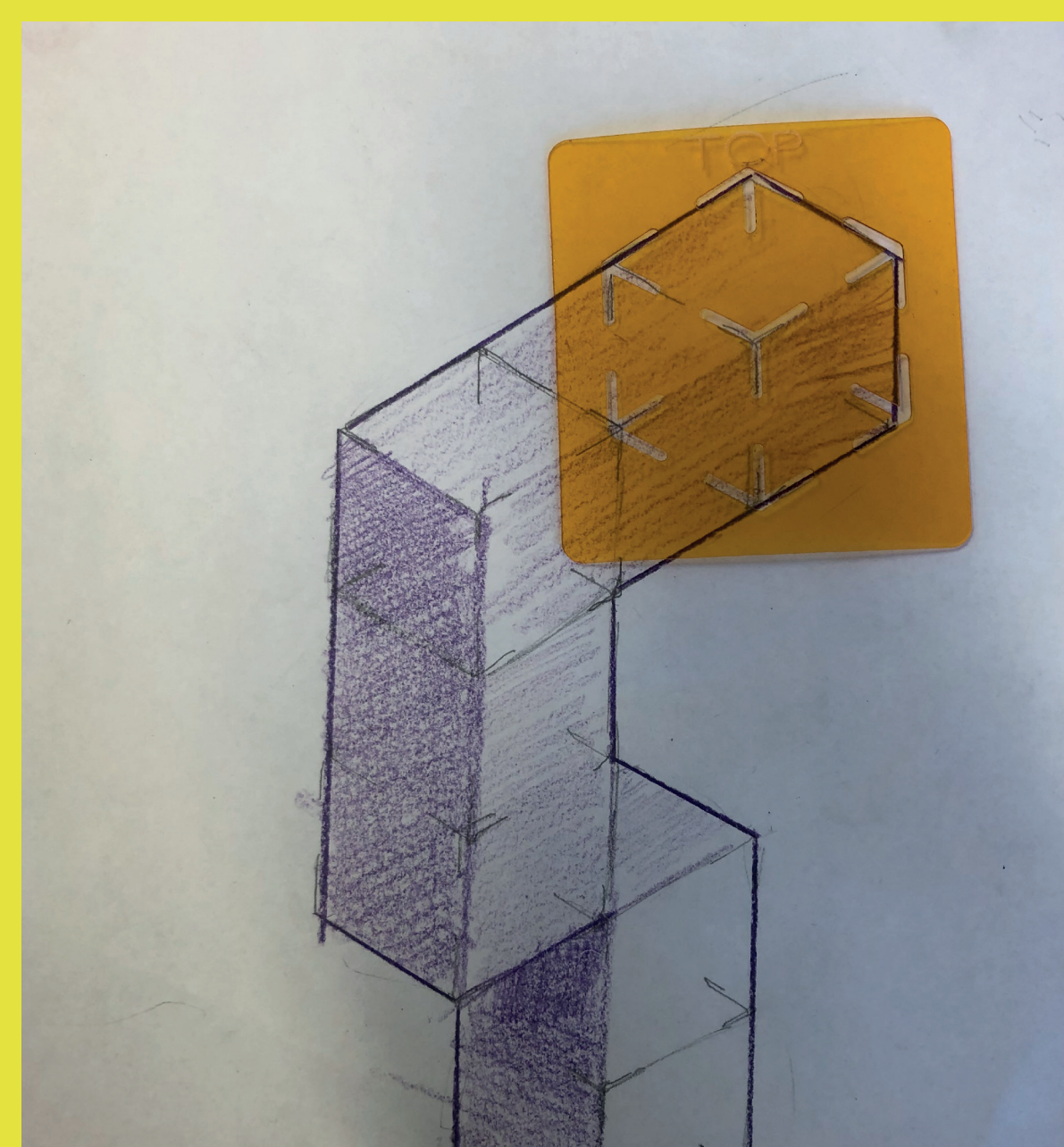
The project is funded by ABC Council and National Lottery Heritage Fund.



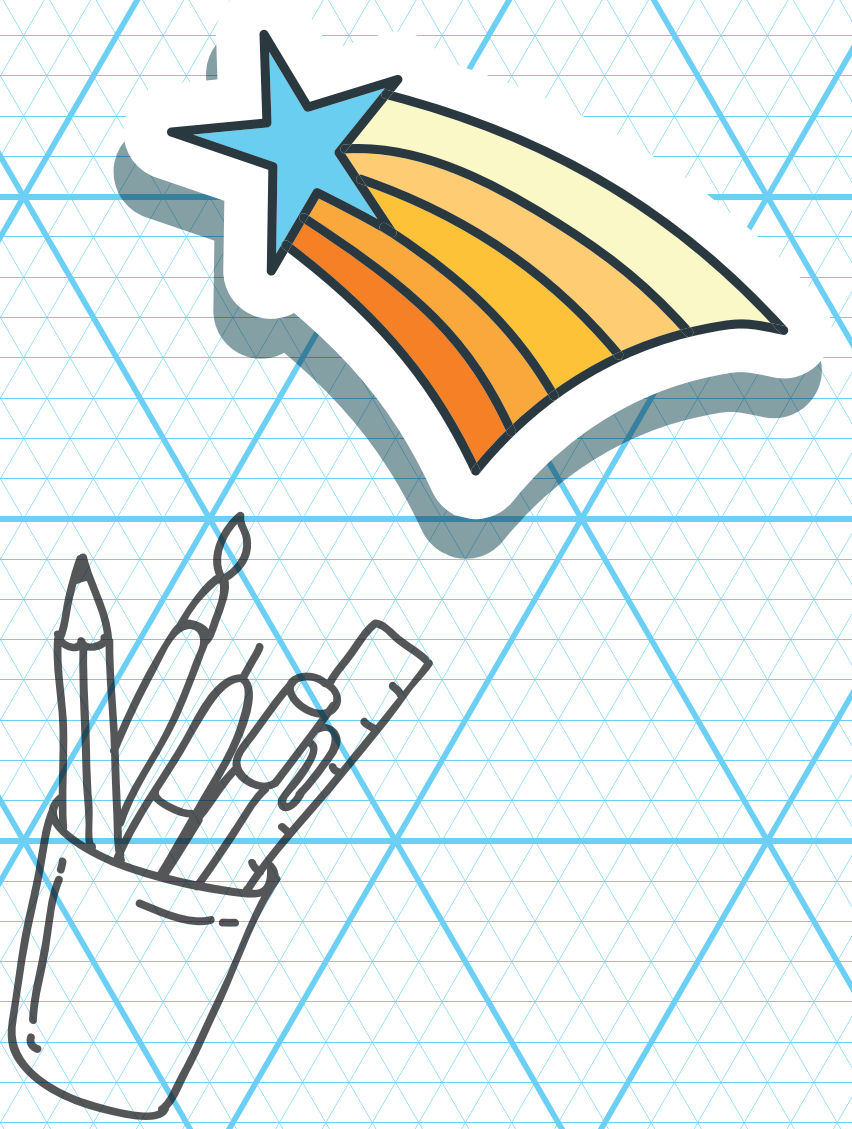
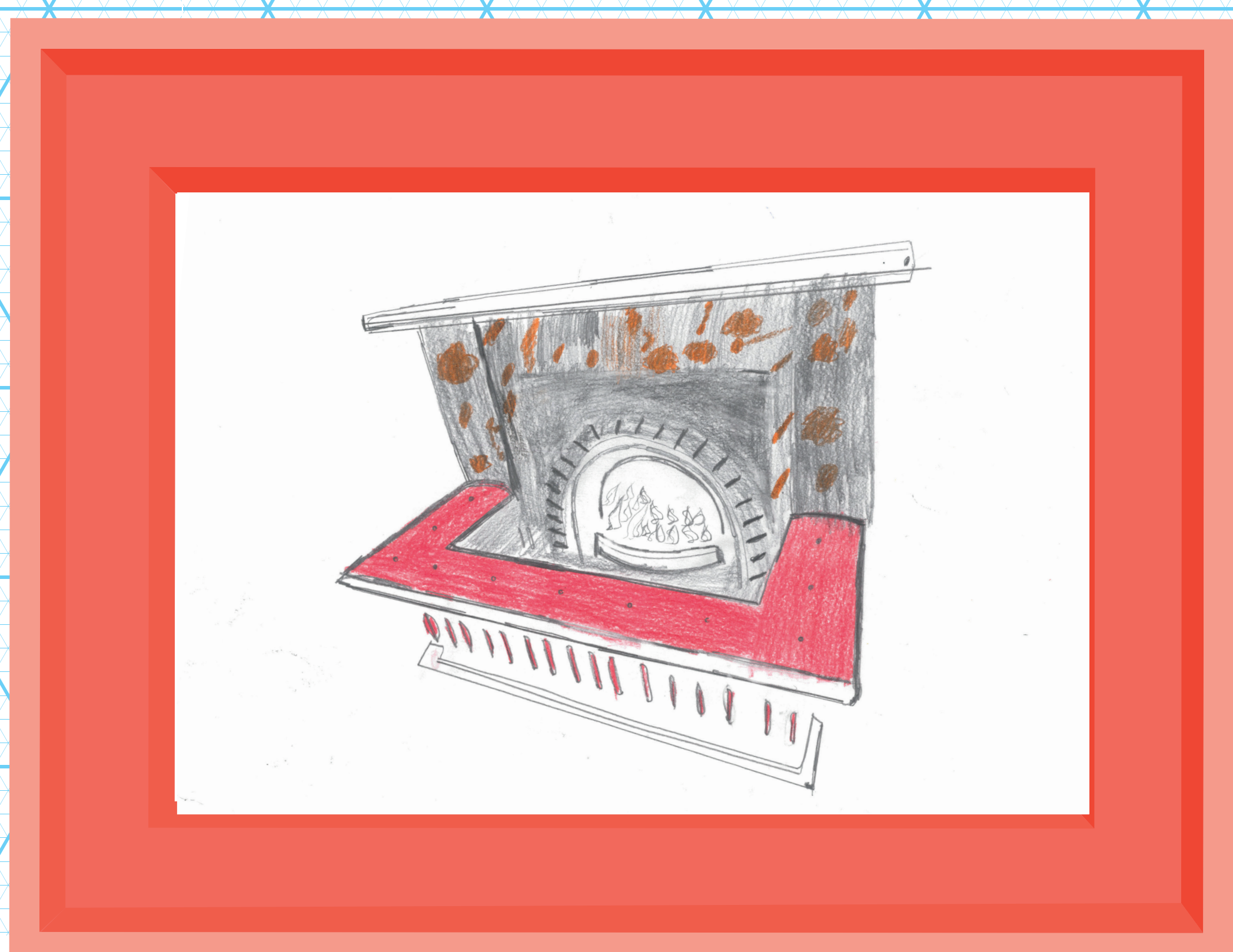
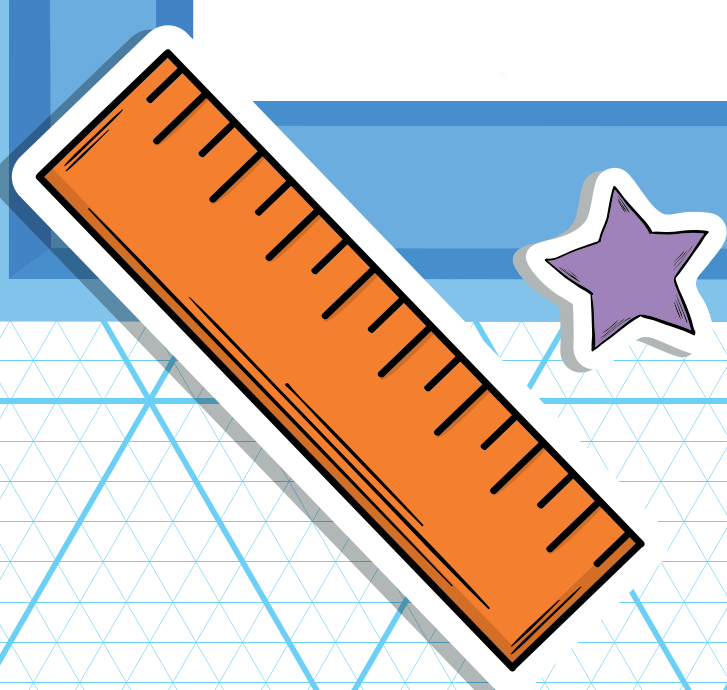
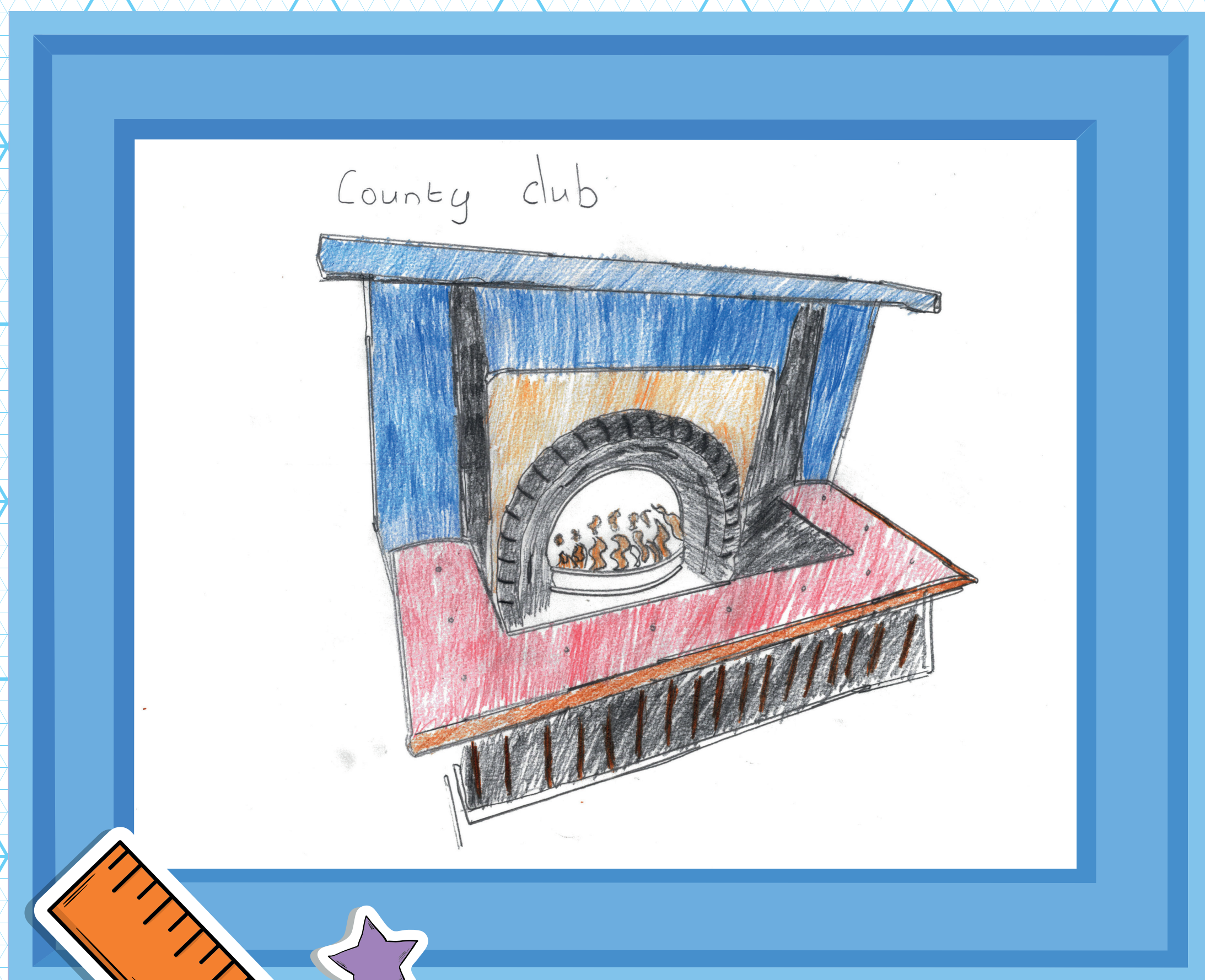
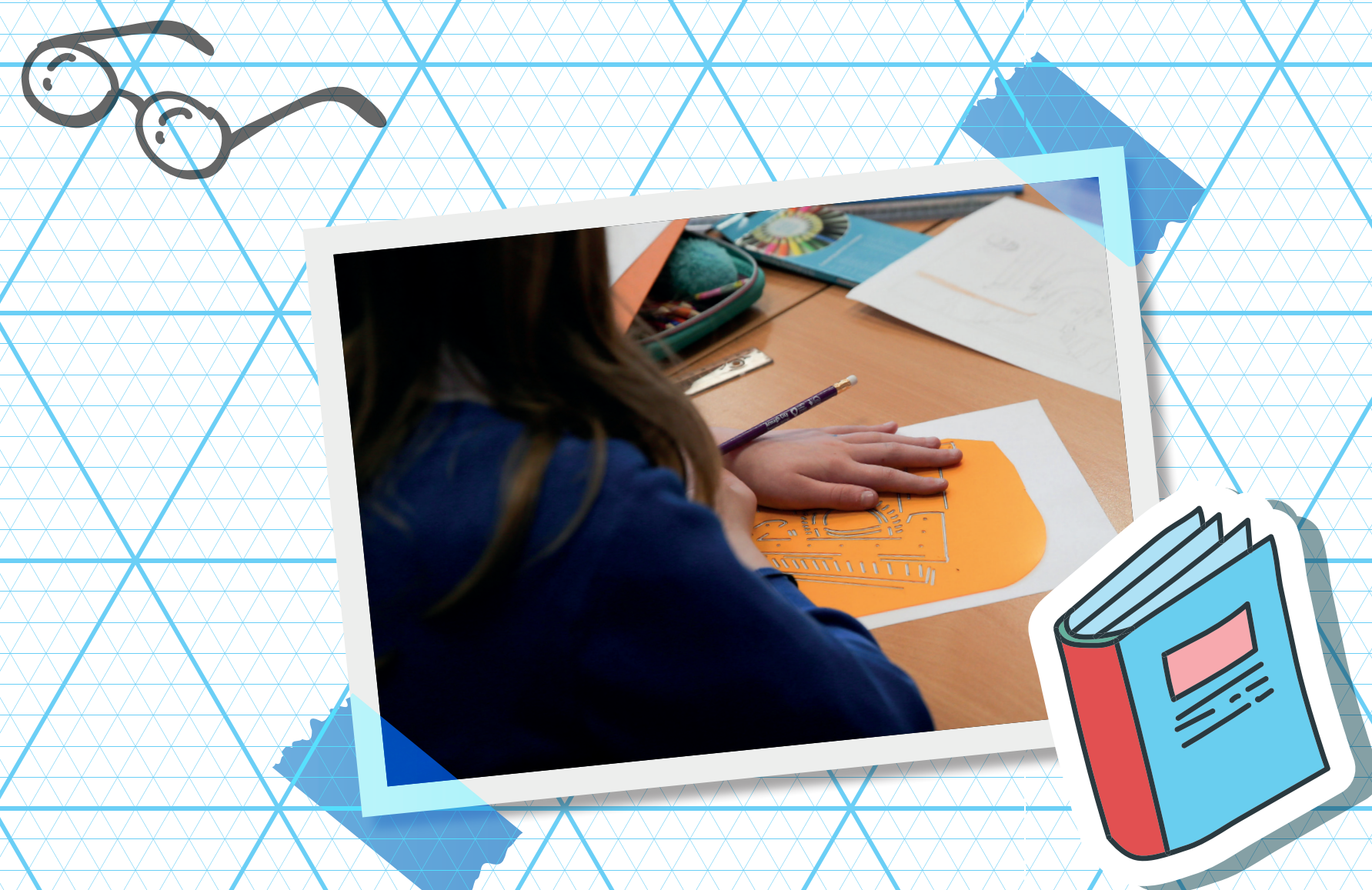
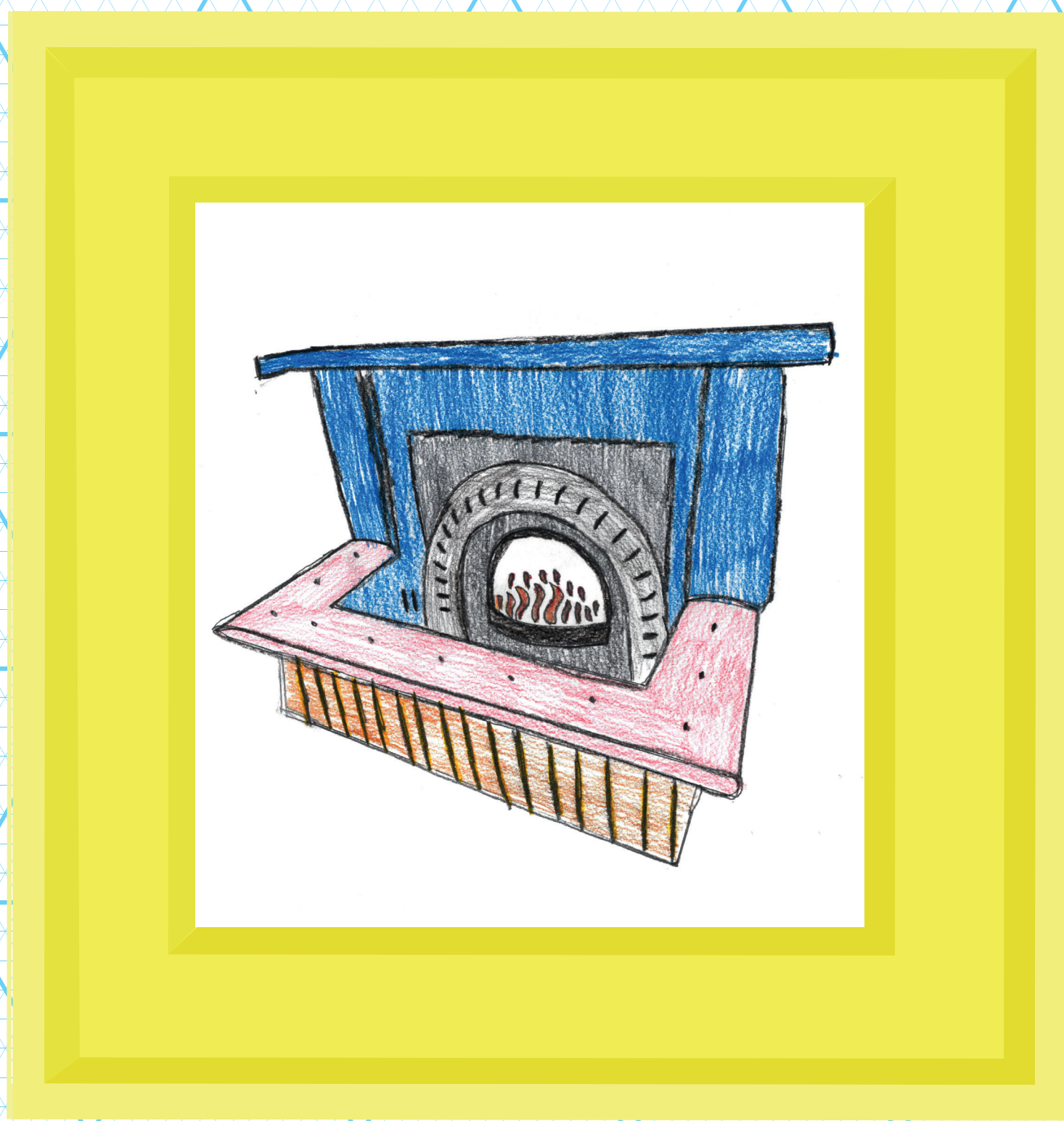
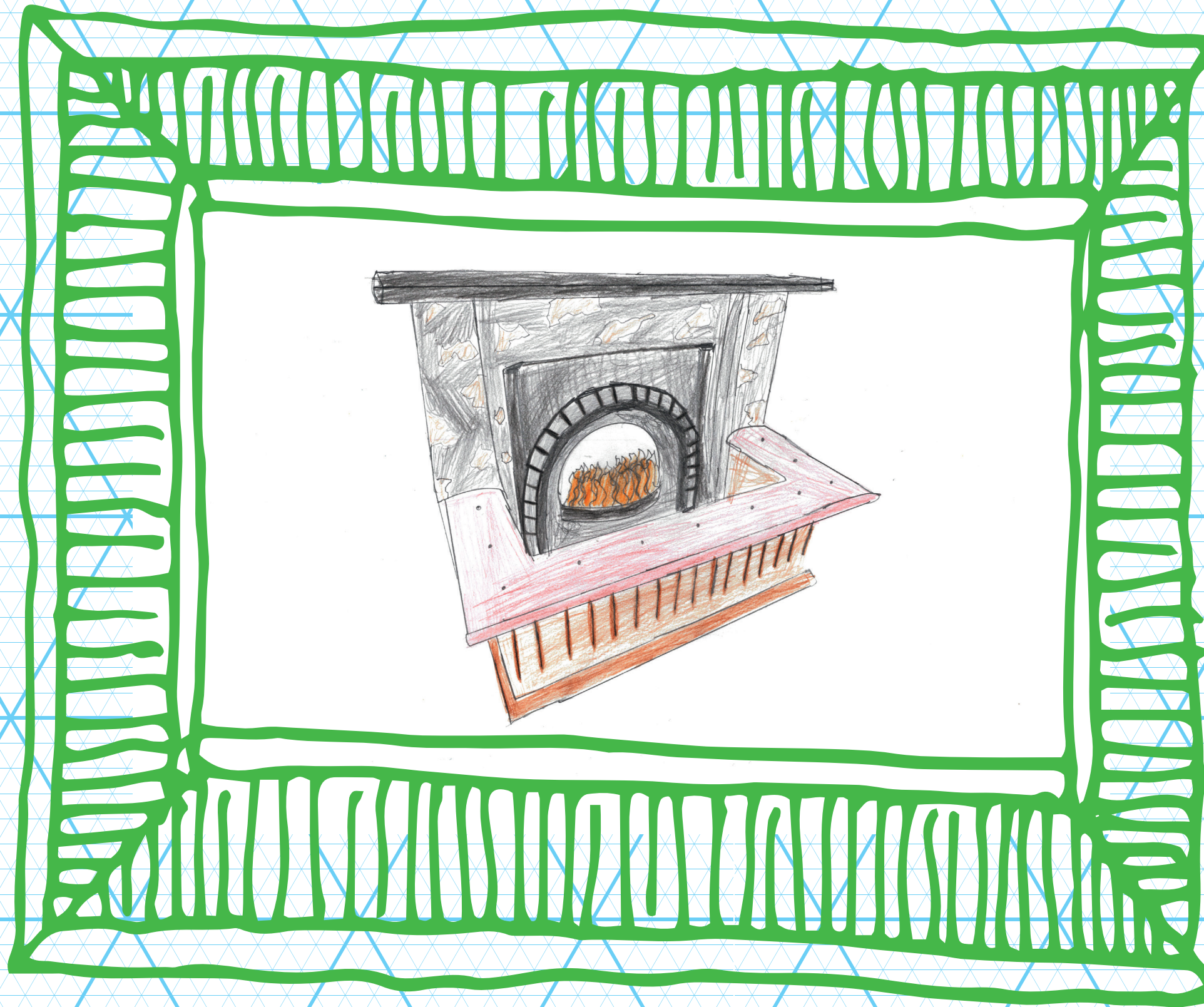
COUNTRY HOUSE



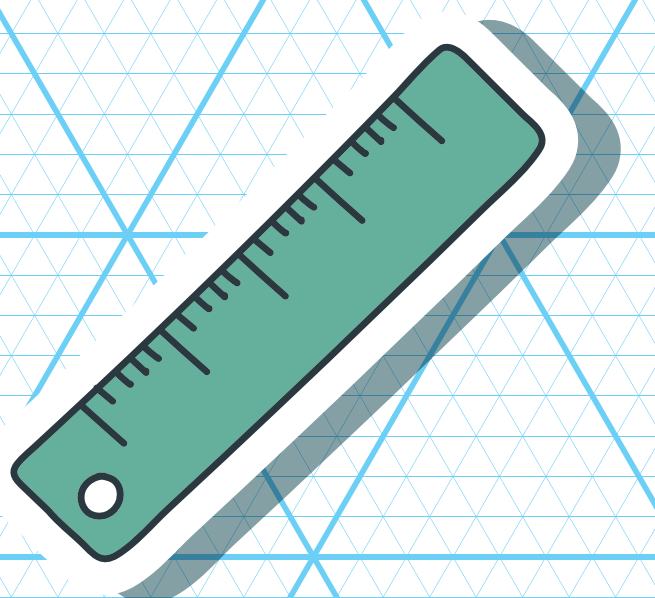
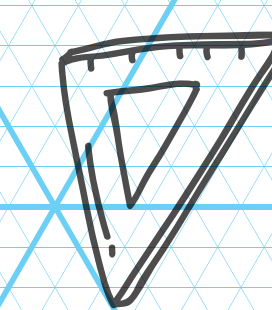
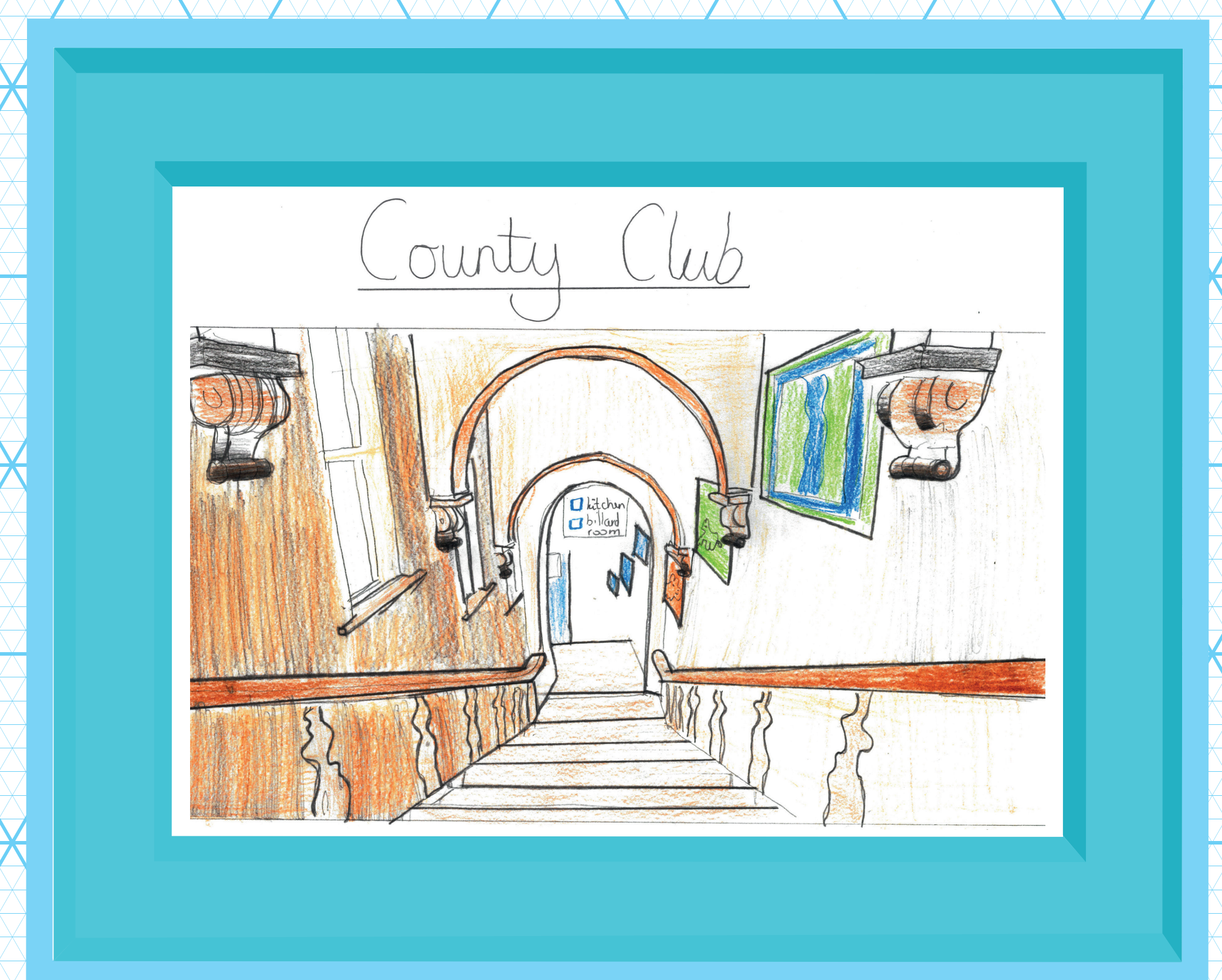
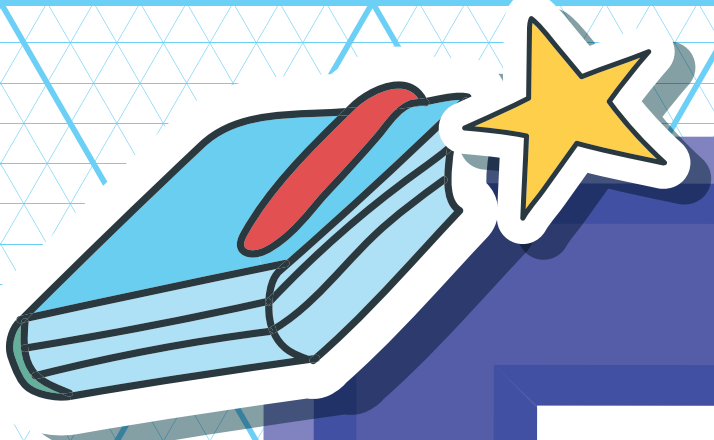
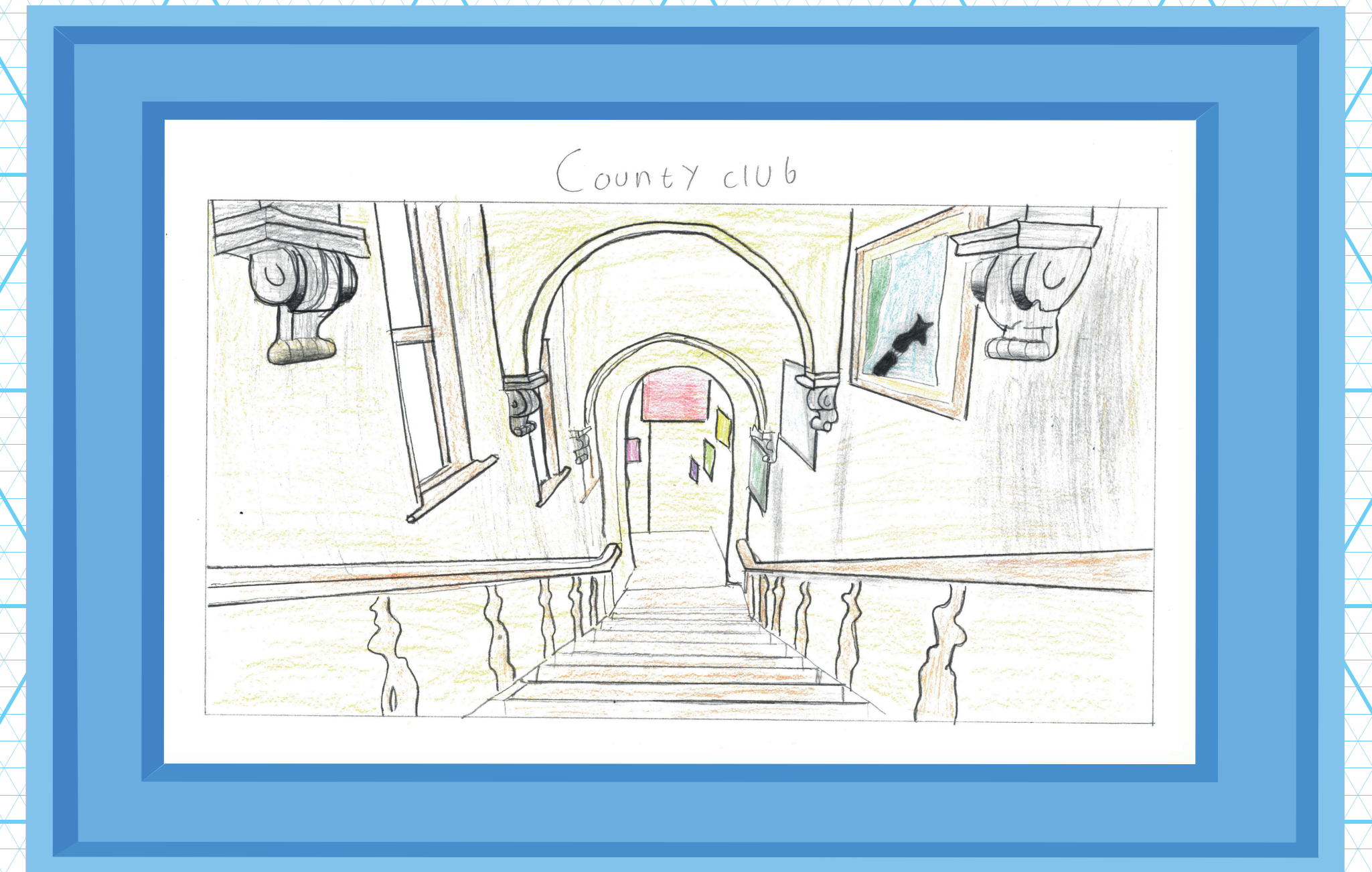
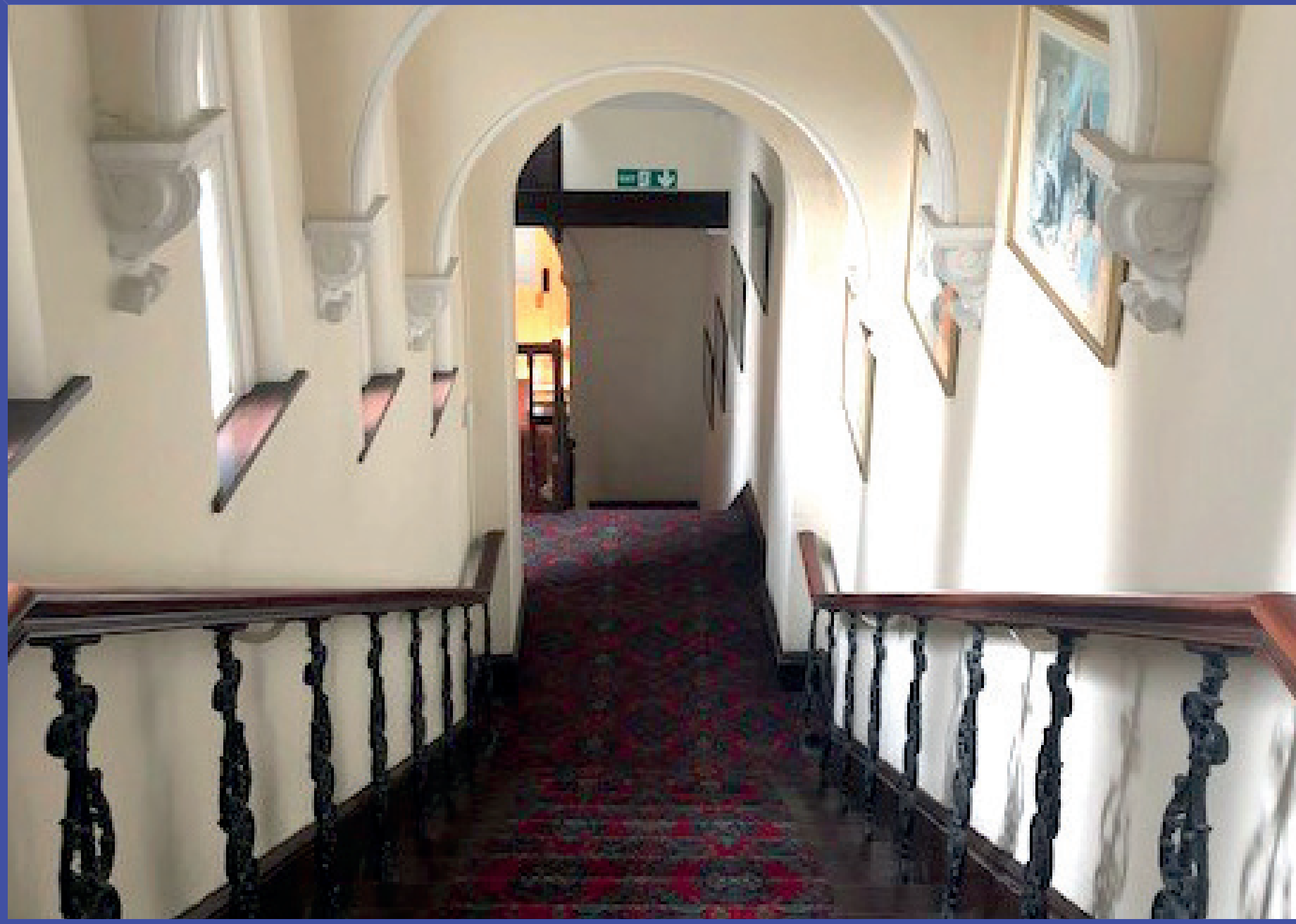
CUBES



FIRE PLACE



STAIRCASE



FRONT DOOR

