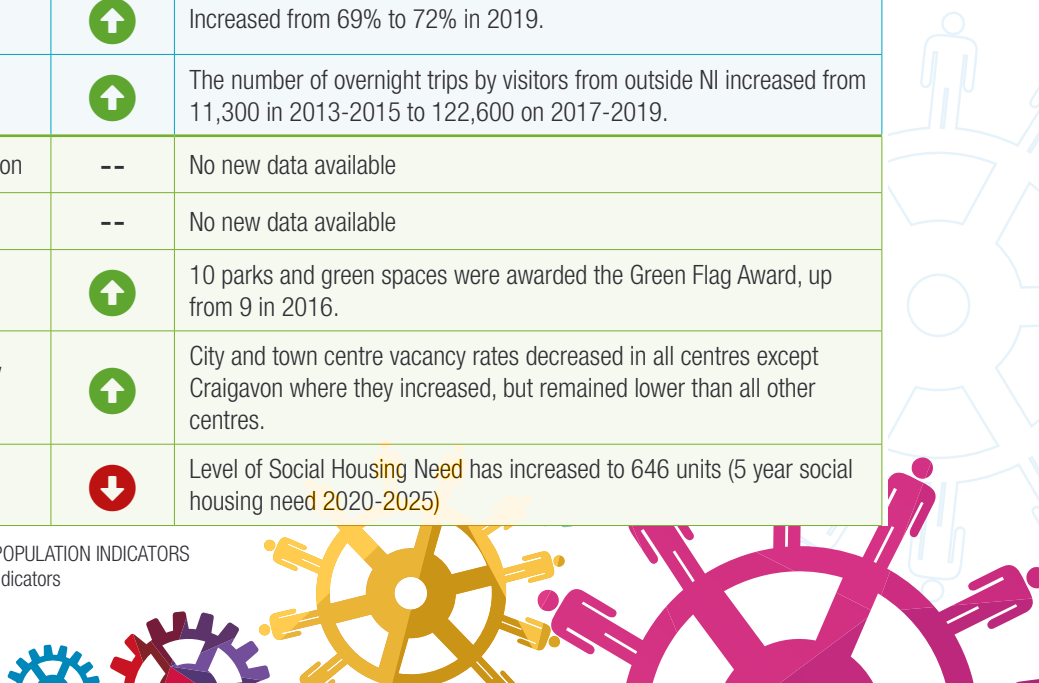


# HOW IS ARMAGH CITY, BANBRIDGE & CRAIGAVON BOROUGH DOING IN THE ROUND?

The community plan, Connected, tracks 19 population level statistics to monitor social, economic and environmental progress. These are published every two years in a Statement of Progress. The most recent statement was published in November 2021.

COMMUNITY	Influencing decisions	↓	Yearly decrease in the % of people who feel they have an influence on decisions made in their neighbourhood to 26%. In 2018-2020.
	Sense of belonging	↑	91% of people feel a sense of belonging to their neighbourhood
	Preventable deaths	↑	Between 2016 and 2020 the no. of preventable deaths per 100,000 population fell from 198 to 153.
	Health inequalities - females	↓	The gap in life expectancy between those living in the most deprived areas increased from 1 year in 2012-2014 to 1.6 years in 2017-2019.
	Health inequalities - males	↑	The gap in life expectancy between those living in the most deprived areas decreased from 3.3 years in 2012-2014 to 2.9 years in 2017-2019.
	Sport & physical activity	--	No new data available
	Fear of crime	↑	76% of people report that fear of crime has a minimal impact on their quality of life.
	Town and city centres	↓	The % of people who saw town centres as safe & welcoming for people from all walks of life decreased to 54% in 2018-2020 from 71% in 2014-2016.
	Accidental dwelling fires	↑	There were fewer accidental dwelling fires (78) in 2020 than in 2016.
ECONOMY	Business numbers	↑	The no. of VAT &/or PAYE registered businesses increased to 8,930 in 2021.
	Business birth rates	↑	Business birth rates increased to 10% in 2019, up from 8% baseline in 2014.
	Business survival rates	↑	Business survival rates increased.
	Skill levels	↑	% of the workforce in employment and qualified in all 4 levels increased.
	Employment rate	↑	Increased from 69% to 72% in 2019.
	Overnight trips	↑	The number of overnight trips by visitors from outside NI increased from 11,300 in 2013-2015 to 122,600 on 2017-2019.
PLACE	Arts and cultural participation	--	No new data available
	Buildings at risk	--	No new data available
	Parks & green spaces	↑	10 parks and green spaces were awarded the Green Flag Award, up from 9 in 2016.
	City & town centre vacancy rates	↑	City and town centre vacancy rates decreased in all centres except Craigavon where they increased, but remained lower than all other centres.
	Social housing need	↓	Level of Social Housing Need has increased to 646 units (5 year social housing need 2020-2025)



# COVID-19: IMPACT ON THE BOROUGH



## Older people

Infection rates higher in over 65s. Over 75s 9 times more likely to die from COVID than all other ages



## Men

Lower infection rates, but more likely to be admitted to hospital and die from the disease than women



## People who live in areas of deprivation

More likely to become infected with COVID, be admitted to hospital and die from the disease



## Women

Higher infection rates than men



## Urban areas

Double the death rate compared to rural areas

## 2019-2020 Waiting lists for SHSCT

Waiting lists for Inpatient/Day Case appointments **increased by 30.2%** (4,446 more people)

Waiting lists for Outpatient appointments **increased by 19.9%** (8,602 more people)



Pre-covid

**23% of children** living in the Borough were in relative poverty



At March 2020 the claimant count was 2,610. The number of claimants **peaked to 6,250 in August 2020**



## Foodbank information

In 2019/20 Armagh Foodbank **issued 1,102 food parcels. This increased to 1,700 in 2020/21 (+54%).**

Via Wings Dare to Care Project **supported 139 households in 2020 (+96% higher than the previous year).**

Craigavon Area Foodbank **distributed 41,475kg of food in 2020/21 (+17% year on year increase)**

The Storehouse, Banbridge also **registered increase demand with an estimated 36% additional food parcels.**

## 8,930 VAT and/or PAYE

registered businesses over the last year within the Borough (+n205; +2% compared to 2020).



## 309 business cases

were approved through the Go For It programme - equating to 190 jobs created

Reported Domestic Abuse incidents **increased by 6% in 2020/2021**



Women's Aid received **549 referrals for women**

living in the Borough in 2020/21: a year on-year increase of 38%

