

Policy Screening Form

Policy Scoping

Policy Title: Play Strategy 2018 – 2026 – Play Park Oxford Island

Brief Description of Policy (please attach copy if available). Please state if it is a new, existing or amended policy.

Existing Strategy 2018 - 2026

The Purpose of the Armagh City, Banbridge and Craigavon Borough Council Play Strategy is to establish a strategic framework within which all decision making as it relates to the provision of fixed play and non-fixed play can take place.

<https://getactiveabc.com/homepage/play-development/>

This screening form relates to the Bespoke design of Oxford Island Play Park. This is a new screening based on the Play Strategy Policy developed in May 2019.

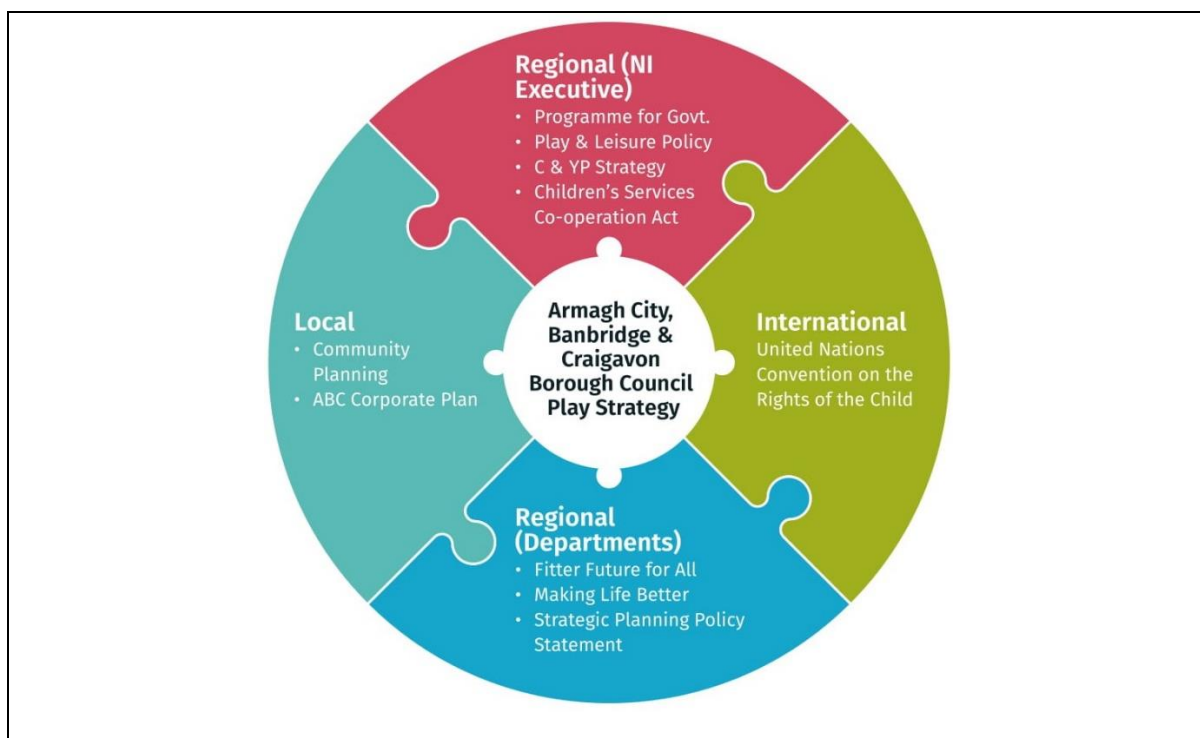
Intended aims/outcomes. What is the policy trying to achieve?

In rolling out this strategy we aim to ensure that children and young people living in or visiting the council area are best able to meet their play needs. Armagh City, Banbridge and Craigavon Borough Council have therefore agreed a number of key aims:

- To make Parks and open spaces attractive and welcoming to children and young people, allowing them an opportunity to engage in a wide range of play activities within the natural environment.
- To ensure that fixed play areas are attractive, welcoming, safe challenging, accessible and inclusive whilst providing a high level of play value for all children and young people.
- To ensure that all future fixed play provision is targeted at those areas of greatest need, leased on an ongoing review of underlying demographics requirements.
- To encourage adults within the community to acknowledge the play needs of children and young people and recognise the positive contribution play makes to society.
- To provide children and young people, parents and communities with opportunities to engage in the planning process as it relates to meeting local play need.
- To establish a portfolio of approaches to meeting play need, incorporating not only fixed play but also street and community play, play volunteer schemes and other non-fixed approaches.
- To ensure that all appropriate council staff receive the training they require in order to implement and oversee the roll-out of the play strategy.
- To embed the play strategy within emerging Community Planning process ensuring broad, collective responsibility for meeting play need across the partnership.

Policy Framework

Has the policy been developed in response to statutory requirements, legal advice or on the basis of any other professional advice? Does this affect the discretion available to Council to amend the policy?



Are there any Section 75 categories which might be expected to benefit from the policy? If so, please outline.

Persons of the following categories may benefit from the Play Strategy:

- a different religious belief
- political opinion
- racial group
- age
- marital status
- sexual orientation
- between men and women generally
- between persons with a disability and persons without
- between persons with dependants and persons without

Children and young people, children and young people with a disability and those with dependants will particularly benefit from this policy.

Who initiated or wrote the policy (if Council decision, please state). Who is responsible for implementing the policy?

Who initiated or wrote policy?	Who is responsible for implementation?
The Council commissioned PlayBoard NI	The Council is responsible for implementation with assistance from the community planning partners.

--	--

Are there any factors which might contribute to or detract from the implementation of the policy (e.g. financial, legislative, other)?

Financial:

The failure to secure adequate funding will result in the implementation of the strategy and the provision for play and parks generally being detracted.

Legislative:

Any changes in H & Safety, Equality or Disability regulations.

Main stakeholders in relation to the policy

Please list main stakeholders affected by the policy (e.g. staff, service users, other statutory bodies, community or voluntary sector, private sector)

Children and young people, Community & Staff in the community voluntary and private sector.

Are there any other policies with a bearing on this policy? If so, please identify them and how they impact on this policy.



- Banbridge , Newry and Mourne Area Plan 2015
- Armagh, Banbridge and Craigavon Local Development Plan Paper 2015
- Community Plan for Armagh City, Banbridge and Craigavon Borough 2017-2030
- Regeneration & Development Strategy for Armagh City, Banbridge & Craigavon Borough Council
- Armagh City, Banbridge and Craigavon Borough Council- Corporate Plan 2018-2023
- Get Moving ABC Framework 2020-2030

Available Evidence

Council should ensure that its screening decisions are informed by relevant data. What evidence/information (both qualitative and quantitative) have you gathered to inform this policy? Specify details for each of the Section 75 categories.

Section75 category	Evidence
Religious belief	<p>Religious composition of ABC 2011</p> <p>The designation of settlements and provision of development opportunities needs to be carefully considered against the needs and spatial distribution of people of different religion or political opinion to prevent prejudice of any religious or political group and thus meet the requirements of Section 75 of the Northern Ireland Act. Therefore the Plan is where possible, aims to provide play services accessible to all.</p> <p>The 2011 Census showed that 43% of the population in the Borough were either Catholic or brought up as Catholic and 52% belonged to or were brought up in Protestant, other Christian or Christian-related denominations. A further 1% belonged to or had been brought up in other religions, while 5% neither belonged to, nor had been brought up in, a religion.</p>
Political opinion	<p>Armagh City, Banbridge and Craigavon Borough Council has 41 elected members, the breakdown of seats by political party is:</p> <ul style="list-style-type: none"> • Democratic Unionist Party – 11 • Ulster Unionist Party - 10 • Sinn Fein - 10 • Social Democratic and Labour Party - 6 • Alliance - 3 • Independent - 1 <p>A total of 79,309 votes were polled in the borough from an eligible electorate of 147,977 giving a turnout of 53.6%. This breakdown is taken as an approximate representation of the political opinion of people within the Borough.</p>
Racial group	<p>The 2011 Census showed that:</p> <ul style="list-style-type: none"> • 98.5% of the usually resident population of the Borough were White and 1.5% were from minority ethnic groups. The main ethnic minorities were Mixed (605 individuals), Chinese (528 individuals) and Other Asian (463 individuals). • 89.0% of residents in the Borough were born in Northern Ireland. The Borough had 5.4% of residents or 10,846 individuals who were born outside the United Kingdom or Republic of Ireland. <p>4.1% of residents aged 3+ years or (7,896 individuals) spoke a language other than English or Irish as their main language. Apart from English and Irish, the most common other main languages were Polish (2,919 residents aged 3+ years), Lithuanian (1,736) and Portuguese (834). Of those whose main language is not English or Irish, 34% cannot speak English or cannot speak it well (based on the three legacy council areas).</p>
Age	<p>The population of the Borough was estimated to be 216,205 at 30 June 2019. The profile by age group is:</p> <ul style="list-style-type: none"> • 0-15 years - 23%

	<ul style="list-style-type: none"> • 16-39 years - 30% • 40-64 years - 32% • 65+ years - 16% <p>The Borough has a growing and ageing population. The population of the Borough is projected to increase by almost 8% or 16,675 people over the next 10 years to 2029. The largest percentage increase is projected in the 65 and over age group (29%). Within this age group the number aged 85 and over are projected to increase by an extra 1,781 people (46%).</p>
Marital status	<p>The 2011 Census provides information on the marital status profile of those aged 16 and over in the Borough:</p> <ul style="list-style-type: none"> • Single (never married or never registered a same-sex civil partnership) - 34% • Married - 51% • In a registered same-sex civil partnership - 0.1% • Separated (but still legally married or still legally in a same-sex civil partnership) - 4% • Divorced or formerly in a same-sex civil partnership which is now legally dissolved - 5% <p>Widowed or surviving partner from a same-sex civil partnership - 7%</p>
Sexual orientation	<p>The 2011 Census did not include a question on sexual identity. The Continuous Household Survey provides results on the sexual identity of persons aged 16 and over. In 2017/18 - 2019/20, 98% of respondents to the survey identified as Heterosexual/Straight, 1% as Gay/Lesbian and 1% as Bisexual in the Borough. Note figures may not sum to 100% due to rounding. Results from the 2019 Northern Ireland Life and Times Survey showed for adults aged 18 and over in NI overall:</p> <ul style="list-style-type: none"> • I am 'gay' or 'lesbian' (homosexual) - 2% • I am heterosexual or 'straight' - 90% • I am bi-sexual - 1% • Other answer - 1% • I do not wish to answer this question – 7% <p>Note figures may not sum due to rounding.</p>
Men and women generally	<p>The 2011 Census showed that in Armagh City, Banbridge and Craigavon Borough 49% (98,713) of usual residents were males and 51% (100,980) were females.</p> <p>Population estimates for 2019 show the borough is made up of 107,540 (49.7%) males and 108,665 (50.3%) females.</p>
Disability	<p>In 2011, one fifth (20%) of people (or 39,861 individuals) in the Armagh City, Banbridge and Craigavon Borough had a long-term health problem or disability that limited their day-to-day activities.</p> <p>The Family Resources Survey showed, using data for 2015/16 to 2017/18, 19% of individuals in the Borough were disabled, similar to the level in NI overall (21%).</p> <p>Benefit statistics from the Department for Communities showed as of May 2020 there were:</p>

	<ul style="list-style-type: none"> • 2,120 or 4.4% of under 16 population and 6,070 or 18.1% of 65 and over population claiming Disability Living Allowance • 5,550 or 16.6% of 65 and over population claiming Attendance Allowance <p>15,130 Personal Independence Payment claims in payment (experimental statistics).</p>
Dependants	<p>The 2011 Census showed: 36% or 27,287 households in the Borough contained dependent children. 12% of the population (or 23,101 individuals) provided unpaid care. Of those who provided unpaid support:</p> <ul style="list-style-type: none"> • 58% provided 1-19 hours per week, • 17% provided 20-49 hours per week, and • 25% provided 50+ hours per week. <p>Benefit statistics from the Department for Communities show that at May 2020, there were 7,940 claimants or 4.7% of 16 and over population claiming Carer's Allowance in the Borough.</p>

Needs, experiences and priorities

Taking into account the information gathered above, what are the different needs, experiences and priorities of each of the following categories in relation to this particular policy/decision?

Section 75 category	Needs, experiences and priorities
Religious belief	There is no evidence of any different needs, experiences or priorities for this Section 75 group. All groups will benefit directly and/or indirectly from The Play Strategy.
Political opinion	There is no evidence of any different needs, experiences or priorities for this Section 75 group. All groups will benefit directly and or indirectly from The Play Strategy.
Racial group	There is no evidence of any different needs, experiences or priorities for this Section 75 group. All groups will benefit directly and or indirectly from The Play Strategy.
Age	Young people will particularly benefit from this strategy as it acknowledges that play is a natural and fundamental aspect of children's lives that supports growth and development across a range of developmental areas.
Marital status	No Needs or priorities identified relating to marital status.
Sexual orientation	No Needs or priorities identified relating to sexual orientation status.
Men and women generally	No Needs or priorities identified relating to gender. It is intended that The Play Strategy will benefit people regardless of gender.
Disability	<p>The Play Strategy has been designed to be fully compliant with the Disability Discrimination Act (DDA) 1995. This will address all needs and priorities of those with disabilities.</p> <p>Inclusive Play A fundamental aspect of ensuring accessibility to play for all is the need to ensure that play areas offer opportunities for children and young people to play together regardless of individual ability or disability levels.</p>

The provision of inclusive play is a legal requirement under the (DDA) which lay down rights for disabled people to have the same access to 'goods and services' as other members of the public. From 2004 the DDA also required schools and service providers to make 'reasonable adjustments' to overcome barriers and to ensure that disabled children and young people are not disadvantaged.

Despite some progress in recent years, children with disabilities still face significant barriers to accessing play opportunities. Some of these barriers are practical or environmental, for example physical access issues, whilst others are attitudinal or social in nature.

Inclusive play means more than simply providing physical access to play areas or open spaces. In order to be truly inclusive a play area must be open and accessible to all, providing high quality physical, creative and social play opportunities for children regardless of their needs and abilities.

The play environment should provide a range of sensory experiences, have open access to play opportunities and offer opportunities for all children to extend their capabilities and explore possibilities through play. Expensive, specialised equipment is rarely needed; rather equipment should be multi-functional and open to all abilities e.g. inclusive roundabout.

Through the Play Strategy the following will be included in Oxford Island refurbished Play Park:

District Play Park

- An inclusive wheelchair spin taking 2 wheelchairs
- An inclusive picnic table
- Inclusive sensory and educational panels throughout the site
- An inclusive harness swing
- An inclusive basket swing
- Opportunities for imaginative play for all across the site and using different senses
- Opportunities for free play - making up own games
- Additional inclusive ramp to get all children up to height to play
- Opportunities for play/learning in natural spaces
- Access to/from the play equipment
- Educational/conservation play - educational information throughout the site in partnership with the Conservation Education Team
- Including six senses of Inclusion – Proprioception, Vestibular, Touch, Smell, Sound & Sight (taste is included if a family choose to bring along a picnic).
- Dedicated parking

	<p>In addition to the above following is also available for use nearby:</p> <ul style="list-style-type: none"> • Existing toilet facilities • Changing places are located at Brownlow Hub, 2 at South Lakes Leisure Centre. <p>Through the Play Strategy (P57) it was identified that expensive, specialised equipment is rarely needed; rather equipment should be multi-functional and open to all abilities e.g. inclusive roundabouts. However council are providing a wheelchair swing in Lurgan Park, Portadown People’s Park (From March 2021), Gosford Forest Park (From March 2021).</p> <p>Oxford Island Play Park is in a Nature Reserve and because to this the Play Park Designers have in partnership with Council to designed a bespoke play park.</p> <p>Play Development worked in partnership with the Conservation Education Team so that the child can be stimulated to develop all their senses. Not just focusing on physical disability but all disabilities and special education needs. We have included the following senses of inclusion:</p> <ol style="list-style-type: none"> 1. Proprioception 2. Vestibular 3. Sound 4. Touch 5. Sight 6. Smell (naturally occurring smell in the nature reserve surroundings) 7. Taste – if the children come and have a picnic with their families their taste will also be engaged. Council cannot provide anything to taste in the play park. <p>As part of ongoing CPD the following Organisations have been engaged with via ongoing conversations/webinars/discussions/Training:</p> <ul style="list-style-type: none"> • PlayBoard NI • Play Safety Forum • Harpers Playgrounds (USA) (Building a more Inclusive World one Playground at a time) • Landscape Institute (Inclusive Play in Natural Spaces) <p>Children, young people and communities who live in the area of the Play Park are consulted prior to the renewal/progression of their play park.</p>
Dependants	<p>The 2011 Census as recorded in The Play Strategy</p> <p>Armagh - 21% of the overall population are dependent (0-14)</p>

	<p>Banbridge – 21% of the overall population are dependent (0-14)</p> <p>Craigavon – 21% of the overall population are dependent (0-14)</p> <p>The distribution of young people aged 15-19</p>
--	--

Screening Questions

1. What is the likely impact on equality of opportunity for those affected by this policy for each of the Section 75 categories?

Category	Policy Impact	Level of impact (Major/minor/none)
Religious belief	The Play Strategy aims to improve the environment for all users. It is not felt that the policy will have an adverse impact on people with different religious beliefs.	None
Political opinion	The Play Strategy aims to improve environments for all users. It is not felt that the policy will have an adverse impact on people with different political opinions.	None
Racial group	The Play Strategy aims to improve environments for all users. It is not felt that the policy will have an adverse impact on people from different racial groups	None
Age	The Play Strategy aims to improve environments for all users. It is not felt that the policy will have an adverse impact on people of different ages, any impact is expected to be positive particularly for children and young people	Positive Minor
Marital status	The Play Strategy aims to improve the environment for all users. It is not felt that the policy will have an adverse impact on people of different Marital status.	None
Sexual orientation	The Play Strategy aims to improve the environment for all users. It is not felt that the policy will have an adverse impact on people of different sexual orientation	None
Men and women generally	The Play Strategy aims to improve the environment for all users. It is not felt that the policy will have an adverse impact on people of different gender.	None
Disability	The Play Strategy aims to improve the environment for all users. It is not felt that the policy will have an adverse impact on people with different abilities. Any impact is expected to be positive.	Positive Minor

	<p>Through the Play Strategy the following will be included in any refurbished/new play park where the space allows:</p> <p>District Play Park</p> <ul style="list-style-type: none"> • An inclusive wheelchair spin taking 2 wheelchairs • An inclusive picnic table • Inclusive sensory and educational panels throughout the site • An inclusive harness swing • An inclusive basket swing • Opportunities for imaginative play for all across the site and using different senses • Opportunities for free play - making up own games • Additional inclusive ramp to get all children up to height to play • Opportunities for play/learning in natural spaces • Access to/from the play equipment • Educational/conservation play - educational information throughout the site in partnership with the Conservation Education Team • Including six senses of Inclusion – Proprioception, Vestibular, Touch, Smell, Sound & Sight (taste is included if a family choose to bring along a picnic). • Dedicated parking <p>In addition to the above following is also available for use nearby:</p> <ul style="list-style-type: none"> • Existing toilet facilities • Changing places are located at Brownlow Hub, 2 at South Lakes Leisure Centre. <p>Through the Play Strategy (P57) it was identified that expensive, specialised equipment is rarely needed; rather equipment should be multi-functional and open to all abilities e.g. inclusive roundabouts. However council are providing a wheelchair swing in Lurgan Park, Portadown People's Park (From March 2021), Gosford Forest Park (From March 2021).</p> <p>Oxford Island Play Park is in a Nature Reserve and because to this the Play Park Designers have in partnership with Council designed a bespoke play park which is:</p>	
--	---	--

	<p>Educational in partnership with the Conservation Education Team Imaginative play helping children to develop all their senses. Not just focusing on physical disability but all disabilities and Special Education Needs. These include equipment which will include the senses. We have included the following senses of inclusion:</p> <ol style="list-style-type: none"> 1. Proprioception 2. Vestibular 3. Sound 4. Touch 5. Sight 6. Smell (naturally occurring smell in the nature reserve surroundings) 7. Taste – if the children come and have a picnic with their families their taste will also be engaged. Council cannot provide anything to taste in the play park. <p>As part of ongoing CPD the following Organisations have been engaged with via ongoing conversations/webinars/discussions/Training:</p> <ul style="list-style-type: none"> • PlayBoard NI • Play Safety Forum • Harpers Playgrounds (USA) (Building a more Inclusive World one Playground at a time) • Landscape Institute (Inclusive Play in Natural Spaces) <p>Children, young people and communities who live in the area of the Play Park are consulted prior to the renewal/progression of their play park./progression of their play park.</p>	
Dependents	The Play Strategy aims to improve the environment for all users. It is not felt that the policy will have an adverse impact on people with dependents, any impact is expected to be positive.	Positive Minor

2. Are there opportunities to better promote equality of opportunity for people within the Section 75 categories?

Category	If yes, provide details	If no, provide reasons
Religious belief	The Play Strategy has the potential to promote Equality of Opportunity through the Play Through the Ages and Play in the Community Programmes for people of different religious beliefs.	

Political opinion	Our non-fixed Play Programme 'Play in the Community may better promote Equality of Opportunity for people of different political opinion.	
Racial group	The Play Strategy has the potential to promote Quality of Opportunity through the Play Through the Ages and Play in the Community Programmes for people of different racial or ethnic group.	
Age	The Play Strategy has the potential to better promote Equality of Opportunity for this group in that the physical environment will be enhanced for it's users. Improved Play Parks will allow ease of access for anyone using the Play Parks.	
Marital status		The Play Strategy does not offer any opportunity to better promote Equality of Opportunity for people of different marital status.
Sexual orientation		The Play Strategy does not offer any opportunity to better promote Equality of Opportunity for people of different sexual orientation.
Men and women generally	The Play Strategy has the potential to better promote Equality of Opportunity for this girls, boys, women & men generally.	
Disability	<p>The Play Strategy will improve accessibility and movement for those with disabilities.</p> <p>All refurbished and new play parks will be accessible to children and young people of all abilities.</p> <p>A number of inclusive equipment will be installed in each refurbished/new play park.</p> <p>Through the Play Strategy the following will be included in any refurbished/new play park where the space allows:</p> <p>District Play Park</p> <ul style="list-style-type: none"> • An inclusive wheelchair spin taking 2 wheelchairs • An inclusive picnic table • Inclusive sensory and educational panels throughout the site • An inclusive harness swing • An inclusive basket swing 	

	<ul style="list-style-type: none"> • Opportunities for imaginative play for all across the site and using different senses • Opportunities for free play - making up own games • Additional inclusive ramp to get all children up to height to play • Opportunities for play/learning in natural spaces • Access to/from the play equipment • Educational/conservation play - educational information throughout the site in partnership with the Conservation Education Team • Including six senses of Inclusion – Proprioception, Vestibular, Touch, Smell, Sound & Sight (taste is included if a family choose to bring along a picnic). • Dedicated parking <p>In addition to the above following is also available for use nearby:</p> <ul style="list-style-type: none"> • Existing toilet facilities • Changing places are located at Brownlow Hub, 2 at South Lakes Leisure Centre. <p>Through the Play Strategy (P57) it was identified that expensive, specialised equipment is rarely needed; rather equipment should be multi-functional and open to all abilities e.g. inclusive roundabouts. However council are providing a wheelchair swing in Lurgan Park, Portadown People’s Park (From March 2021), Gosford Forest Park (From March 2021).</p> <p>Oxford Island Play Park is in a Nature Reserve. The Play Park Designers have in partnership with Council designed a bespoke natural play park which is:</p> <p>Educational in partnership with the Conservation Education Team. Sensory giving children the opportunity to use their six senses and not just focusing on physical disability but all disabilities and Special Education Needs. These include equipment which will include the senses. We have included the following senses of inclusion:</p> <ol style="list-style-type: none"> 1. Proprioception 2. Vestibular 3. Sound 4. Touch 	
--	---	--

	<p>5. Sight</p> <p>6. Smell (naturally occurring smell in the nature reserve surroundings)</p> <p>7. Taste – if the children come and have a picnic with their families their taste will also be engaged. Council cannot provide anything to taste in the play park.</p> <p>As part of ongoing CPD the following Organisations have been engaged with via ongoing conversations/webinars/discussions/Training:</p> <ul style="list-style-type: none"> • PlayBoard NI • Play Safety Forum • Harpers Playgrounds (USA) (Building a more Inclusive World one Playground at a time) • Landscape Institute (Inclusive Play in Natural Spaces) <p>Children, young people and communities who live in the area of the Play Park are consulted prior to the renewal/progression of their play park.</p>	
Dependents	The Play Strategy will improve accessibility and movement & quality for those with dependents. Improved accessibility and equipment will be in each of the refurbished/new play parks.	

3. To what extent is the policy likely to impact on good relations between people of different religious belief, political opinion, or racial group?		
Category	Details of Policy Impact	Level of impact (major/minor/none)
Religious belief	<p>The Play Strategy will benefit all site users, within all the Section 75 groups. Especially in our Play in the Communities Programme.</p> <p>It is not expected that play will have any negative impact on good relations between people of different religious beliefs, political opinion or racial group.</p> <p>Positive impacts are expected due to the enhanced and regenerated</p>	Positive Minor
Political opinion		
Racial group		

	physical environments of the new/refurbished Play Parks.	
--	--	--

4. Are there opportunities to better promote good relations between people of different religious belief, political opinion or racial group?

Category	If yes, provide details	If no, provide reasons
Religious belief	The new & refurbished Play Parks are anticipated to offer opportunities to better promote good relations between people of different religious beliefs, political opinions and racial groups.	
Political opinion		
Racial group		

Multiple Identity

Generally speaking, people fall into more than one Section 75 category (for example: disabled minority ethnic people; disabled women; young Protestant men; young lesbian, gay and bisexual people). Provide details of data on the impact of the policy on people with multiple identities. Specify relevant s75 categories concerned.

Young and older members of the community with disability/dependents
 People of different racial group/religious belief/political opinion

The Play Strategy will benefit all Section 75 groups within the equality categories, including those with multiple identities mentioned above. The enhancement of the physical environment within the Play Parks will remove obstacles to all potential users. Improved access and equipment will support all users.

Playing in a Local Play Park can be a multi-identity, get moving activity.

Disability Discrimination (NI) Order 2006

Is there an opportunity for the policy to promote positive attitudes towards disabled people?

Each of the new/refurbished Local Play Parks will have at least four pieces of inclusive equipment (inclusive basket swing, inclusive wheel spin, inclusive harness swing & inclusive panels) where children and young people can play. During the consultation process children and young people and adults of all abilities are included in the process and have their say. Play by its nature is inclusive. All of the new/refurbished local play parks are also accessible to the pieces of equipment within that play park.

Is there an opportunity for the policy to encourage participation by disabled people in public life?

--

Screening Decision

A: NO IMPACT IDENTIFIED ON ANY CATEGORY – EQIA UNNECESSARY

Please identify reasons for this below

The Purpose of the Armagh City, Banbridge and Craigavon Borough Council Play Strategy is to establish a strategic framework within which all decision making as it relates to the provision of fixed play and non-fixed play can take place. This policy will particularly benefit children and young people, children and young people with disabilities and those with dependants. No negative impacts have been identified.

B: MINOR IMPACT IDENTIFIED – EQIA NOT CONSIDERED NECESSARY AS IMPACT CAN BE ELIMINATED OR MITIGATED

Where the impact is likely to be minor, you should consider if the policy can be mitigated or an alternative policy introduced. If so, an EQIA may not be considered necessary. You must indicate the reasons for this decision below, together with details of measures to mitigate the adverse impact or the alternative policy proposed.

C: MAJOR IMPACT IDENTIFIED – EQIA REQUIRED

If the decision is to conduct an equality impact assessment, please provide details of the reasons.

Timetabling and Prioritising

If the policy has been screened in for equality impact assessment, please answer the following questions to determine its priority for timetabling the equality impact assessment.

On a scale of 1-3 with 1 being the lowest priority and 3 being the highest, assess the policy in terms of its priority for equality impact assessment.

Priority criterion	Rating (1-3)
Effect on equality of opportunity and good relations	
Social need	
Effect on people's daily lives	

The total rating score should be used to prioritise the policy in rank order with other policies screened in for equality impact assessment. This list of priorities will assist the council in timetabling its EQIAs.

Is the policy affected by timetables established by other relevant public authorities? If yes, please give details.

Monitoring

Effective monitoring will help the authority identify any future adverse impact arising from the policy. It is recommended that where a policy has been amended or an alternative policy introduced to mitigate adverse impact, monitoring be undertaken on a broader basis to identify any impact (positive or adverse).

Further information on monitoring is available in the Equality Commission's guidance on monitoring (www.equalityni.org).

Identify how the impact of the policy is to be monitored

The overall strategy should be reviewed every eight years to ensure that the underlying principles remain sound with mid-point review after four years.

Ongoing monitoring and evaluation by the Play Development Team will be ongoing throughout the process of refurbishment/development of each play park.

Lessons learned and conversations had will be shared at each of the progress meetings for monitoring by the team and the contractor.

Through consultation in particular learning about disabilities and the impact equipment has on those disabilities is shared and discussed at the progress meetings. Decisions made are minuted and monitored on an ongoing basis for learning for future local play parks.

Continued professional development by the team and the contractor are also shared at the progress meetings for considerations and progression to include all in the play processes.

Play Development Team will:

- Continue to keep up to date with relevant legislation
- Continue to keep up to date with inclusive play equipment
- Keep up to date with research around inclusive play
- Continue to consult with children, young people and the community
- Continue to attend conferences and seminars specific to play and equality/disability

Continue to discuss items of equality/disability at our monthly progress meeting for future learning & development.

Approval and Authorisation

A copy of the screening form for each policy screened should be signed off by the senior manager responsible for that policy. The screening recommendation should be reported to the relevant Committee/Council when the policy is submitted for approval.

Screened by	Position/Job title	Date
Joan Noade	Play Development Officer	January 2021
Approved by	Position/Job Title	Date
Jonathan Hayes	Head of Department	January 2021o

Please forward a copy of the completed policy and form to:

mary.hanna@armaghbanbridgecraigavon.gov.uk

who will ensure these are made available on the Council's website.

The above officer is also responsible for issuing reports on a quarterly basis on those policies "screened out for EQIA". This allows stakeholders who disagree with this recommendation to submit their views. In the event of any stakeholder disagreeing with the decision to screen out any policy, the screening exercise will be reviewed.