



CONNECTED **ACTION PLAN**

ABC COMMUNITY PLANNING PARTNERSHIP

2026 - 2029





CONTENTS

Foreword	04
Meet the Chairs	05
Connected: A Community Plan for Armagh City, Banbridge and Craigavon Borough	06
Connected Action Plan Summary	07
Ways of Working & operation of the Partnership	08
Community Actions	12
Economy Actions	18
Place Actions	24
ABC Community Planning Partnership	30
Progress Towards Outcomes Summary	32
Glossary	33

FOREWORD

The background of the page is a dark blue color. It features several stylized, light blue icons. In the top right corner, there are three interlocking gears of different sizes. In the center and bottom right, there are larger icons of a gear with human figures (represented as simple silhouettes) around its perimeter, suggesting a community or organizational structure. The overall aesthetic is clean and professional.

We are delighted to present our community planning partnership's **Connected Action Plan 2026-2029**. While each of our organisations is contributing to the long-term outcomes in the community plan in our day to day work, these actions are our collective effort. They are the areas where we know we need to work together to fulfil the aspirations in our community plan.

We developed this action plan following a mid-point review of *Connected, A Community Plan for Armagh City, Banbridge & Craigavon 2017-2030*. The actions reflect the feedback we received as part of the review and are presented under the most relevant long-term outcome. Each action is being delivered by one of our four sub-committees and we will continue to meet as a chairs' group to identify opportunities to work across policy areas and to ensure our resources are used effectively.

Our partnership has an ethos of shared leadership, and we value the contribution of all partners. The Community & Voluntary Sector Panel is part of our structures and members of the panel hold leadership roles across the partnership. We would like to see the sector's role expanded during the life of this action plan.

We will report on the impact of these actions in our Statement of Progress which is published online every two years. If you would like any additional information on any of the actions or are interested in getting involved, we would love to hear from you. Please contact the Community Planning Team in the council.

ABC COMMUNITY PLANNING PARTNERSHIP CHAIRS' GROUP

ABC COMMUNITY PLANNING PARTNERSHIP



Colette Rogers
Public Health Agency and
Chair of Community Planning
Strategic Partnership



Elaine Gillespie
ABC Council and Vice Chair
of Community Planning
Strategic Partnership

COMMUNITY & VOLUNTARY SECTOR PANEL



Geraldine Lawless
Millenium Court and Chair
of Community & Voluntary
Sector Panel



Donna Stewart
Craigavon and Banbridge Volunteer
Bureau and Community & Voluntary
Sector Panel Vice Chair

SHARED LEADERSHIP & COMMUNITY ENGAGEMENT SUB-COMMITTEE



Catherine Mc Farland
Northern Ireland Housing
Executive and Chair of Shared
Leadership and Community
Engagement sub-committee



Donna Stewart
Craigavon & Banbridge Volunteer
Bureau and Vice-Chair of Shared
Leadership and Community
Engagement sub-committee and
Vice-Chair of CVS Panel

PROMOTING GOOD MENTAL HEALTH AND WELLBEING SUB-COMMITTEE



Gerard Rocks
Southern Health and Social Care
Trust and Chair of Promoting
Good Mental Health and
Wellbeing sub-committee



Laura Wylie
Links Counselling Services
and CVSP and Vice Chair
of Promoting Good Mental
Health and Wellbeing

TACKLING POVERTY AND SOCIAL EXCLUSION SUB-COMMITTEE



Ruth Allen
ABC Council, Co-Chair of
Tackling Poverty and Social
Exclusion sub-committee

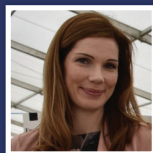


Chris Leech
Craigavon Area Foodbank,
CVSP and Co-Chair of Tackling
Poverty and Social Exclusion
sub-committee



Martin Stevenson
Salvation Army, CVSP
and Co-Chair of Tackling
Poverty and Social
Exclusion sub-committee

PLACE BOARD SUB-COMMITTEE



Sinead Collins
Northern Ireland Housing
Executive and Interim
Chair of Place Board



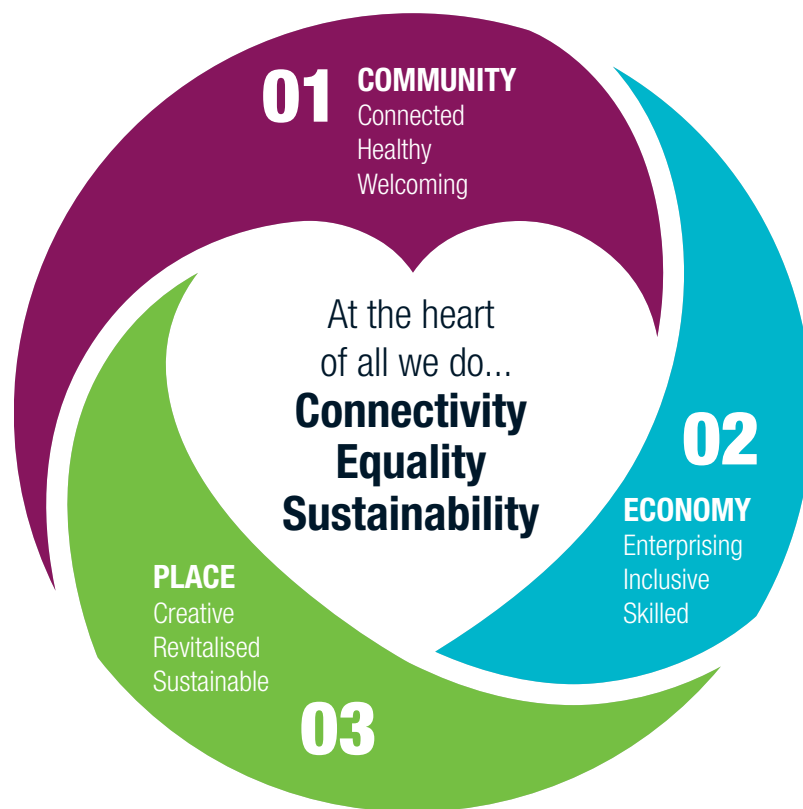
Alistair Quinn
Invest NI, Interim Vice-
Chair of Place Board

CONNECTED A COMMUNITY PLAN

FOR ARMAGH BANBRIDGE AND CRAIGAVON BOROUGH

The community plan is the long-term plan for the borough. It was published in 2017 and reviewed in 2025. It sets out the long-term vision and its purpose is to make life better by improving social, economic and environmental wellbeing.

The nine long-term outcomes in the community plan are summarised below. This action plan sets out our partnership's priorities for realising these outcomes.



**"We have
a happy,
healthy and
connected
community,
a vibrant and
sustainable
economy and
appealing
places
for living,
working and
learning"**

Our 2030 Vision

CONNECTED ACTION PLAN SUMMARY

THEMES	ACTIONS
WAYS OF WORKING	Promote shared leadership across the partnership and public engagement in it's decisions
	Support the Community & Voluntary Sector panel
	Continue to develop the partnership's evidence informed approach
COMMUNITY	Take £500+ Participatory Budgeting
	Take 5 Connect: Deliver the Connect Well, Live Well Network project
	Lead a review of Neighbourhood Renewal in the ABC area, working towards community-led delivery
	Promote the Take 5 Steps to Wellbeing Framework and its delivery
	Take 5: Be Active - Deliver the Get Moving ABC Framework & Action Plan
	Take 5: Give - support the volunteering and volunteers
	Deliver the Age Friendly Strategy for the borough
	Develop and deliver wellbeing wraparound support for those in crisis poverty
Develop a coordinated action plan of programmes, projects and events across the Borough to build cultural awareness, celebrate diversity and strengthen good relations	
ECONOMY	Promote initiatives to support achieving a decent minimum living standard for everyone
	Raise awareness of housing issues in the borough, to include holding a housing conference
	Increase awareness of and access to support and services to prevent and mitigate poverty
	Address the barriers to accessing career opportunities for people experiencing disadvantage
PLACE	Deliver the Heritage Places Programme across the borough
	Continue to roll out place plans
	Identify local needs and projects for the Shaping Sustainable Places Programme
	Maximise the use of public and private land assets for industry, housing and other uses
	Deliver improvements to parks & open spaces
	Research infrastructure needs in the borough. Identify priorities and advocate for resources to deliver them
	Promote shared learning and collaboration on partner initiatives to reduce greenhouse gas emissions and promote biodiversity
	Deliver the PEACE AIR project
Involve local people in improving water quality and improving peatlands in the borough through CALM and PEAT+ projects	

WAYS OF WORKING

WAYS OF WORKING

Our partnership has developed the ways of working required to deliver outcomes and collective wellbeing.



Action	LEAD AND PARTNERS	CPSP Sub-Committee
Promote shared leadership across the partnership and public engagement in it's' decisions	Lead: Jennie Dunlop, ABC Council Partners: All partners, EA (Youth Voice)	Shared Leadership & Community Engagement Sub-Committee
Support the Community & Voluntary Sector Panel	Lead: Michelle Markey, ABC Council Partners: CVS Panel members	Shared Leadership & Community Engagement Sub-Committee
Continue to develop the partnership's evidence informed approach	Lead: Emma O'Carroll, ABC Council Partners: All partners	Shared Leadership & Community Engagement Sub-Committee

Steering Group members





**COMMUNITY
& VOLUNTARY
SECTOR PANEL**
ARMAGH, BANBRIDGE, CRAIGAVON

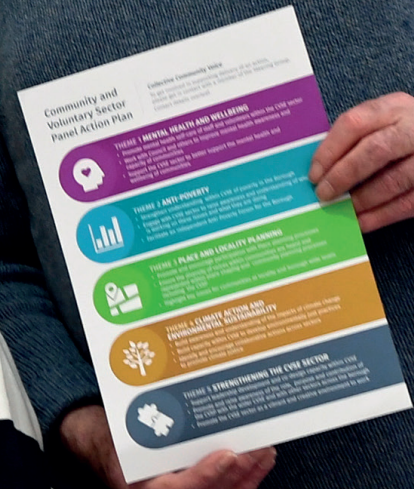
Play your part in Community Planning

Are you part of a Community
& Voluntary organisation?
Why not join our **Community
& Voluntary Sector Panel** and
add your voice to the community
planning process?

Our current themes are:

**MENTAL HEALTH
& WELLBEING**

Steering Group members



The background of the page is a solid purple color. Overlaid on this background are several stylized, light purple icons. These icons consist of interlocking gears of various sizes and human figures (represented as simple silhouettes) positioned around the gears, suggesting a theme of community, industry, and interconnectedness. The icons are most prominent on the left side of the page.

COMMUNITY ACTIONS

CONNECTED COMMUNITY OUTCOME

Everyone has opportunities to contribute to community life and shape decisions - we have a strong sense of community belonging and take pride in our area.

POPULATION INDICATORS

Belonging & Influence

Armagh City, Banbridge & Craigavon



79.5%

Feel a sense of belonging to their neighbourhood compared to 81.7% in NI (2021-23)

19.6%

Feel have an influence on local decisions made in their neighbourhood compared to 18.9% in NI (2021-23)

22.3%

of people aged 16+ reporting feeling lonely at least some of the time compared to 17.8% in NI overall (2023/24)

Action	LEAD AND PARTNERS	CPSP Sub-Committee
Take£500+ Participatory Budgeting	Lead: Michelle Markey, ABC Council Partners: PB Working Group	Shared Leadership & Community Engagement
Take 5 Connect: Deliver the Connect Well, Live Well Network	Lead: Sinead Taylor, SHSCT Partners: Connect Well, Live Well Network & Peace Plus	Promoting Good Mental Health & Wellbeing
Lead a review of Neighbourhood Renewal (NR) in the ABC area, working towards community-led delivery	Lead: Mairead O'Neill, DfC Community Empowerment Division Partners: ABC Council	Tackling Poverty & Social Exclusion

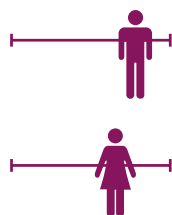
HEALTHY COMMUNITY OUTCOME

People are making positive lifestyle choices. They are more resilient and better equipped to cope with life's challenges.

POPULATION INDICATORS

163 Preventable Deaths

per 100,000 population in Armagh City, Banbridge and Craigavon Borough for the combined years 2018-22 (263 per 100,000 in deprived areas in the Borough and 179 per 100,000 in NI overall)



The gap in Life Expectancy

MALE 2.9 years

between males living in the most deprived areas and the Borough overall has fallen slightly from 3.3 years in 2012-2014 to 2.9 years in 2020-2022. (Male Life Expectancy: ABC 78.8; ABC Deprived 75.9 and NI 78.4)

FEMALE 1.2 years

between females living in the most deprived areas and the Borough overall increased from 1 year in 2012-2014 to 1.2 years in 2020-2022. (Female Life Expectancy: ABC 82.8; ABC Deprived 81.6 and NI 82.3)



54% of people

participate in sport on at least one day per week compared to 48% in NI overall (2023/24)



216 people

per 1,000 population

in the Borough are prescribed medication for mood and anxiety disorders (2022) (263 per 1,000 in deprived areas of the Borough and 225 in NI overall)

Action	LEAD AND PARTNERS	CPSP Sub-Committee
Promote the Take 5 Steps to Wellbeing Framework and its Delivery	Lead: PGMH&WB Sub-Committee Chairs Partners: Sub-committee in partnership with CVS Panel	Promoting Good Mental Health & Wellbeing
Take 5: Be Active Deliver the Get Moving ABC Framework & Action Plan	Lead: Gillian Dewart ABC Council & Get Moving Partnership Partners: PHA, CVSP, CHS, SHSCT, EA, Sport NI, Age Friendly Alliance, Verve Network, CWLW	Promoting Good Mental Health & Wellbeing
Take 5: Give Support the volunteering and volunteers	Lead: Donna Stewart, Craigavon & Banbridge Volunteer Bureau and Raquel Rodrigues, Volunteer Now Partners: CVS Panel, Peace Plus & ABC Council Seniors Network, Age Friendly Alliance, Sport NI	Promoting Good Mental Health & Wellbeing
Deliver the Age Friendly Strategy for the borough	Lead: Stephanie Rock, ABC Council Partners: Age Friendly Alliance & ABC Seniors Network	Promoting Good Mental Health & Wellbeing
Develop and deliver wellbeing wraparound support for those in crisis poverty	Lead: Boyd, McClurg ABC Council & Chris Leech, Crisis Support Network Partners: JBO, Verve Network, Recovery College, CVSP, SRC	Promoting Good Mental Health & Wellbeing

WELCOMING COMMUNITY OUTCOME

Our borough is a safe, inclusive, respectful and peaceful place.

POPULATION INDICATORS

73% of people in Armagh City, Banbridge & Craigavon Borough reported that fear of crime has a minimal impact on their quality of life, this was the same in NI overall (2021/22)



64 Accidental dwelling Fires (2024) in Armagh City, Banbridge & Craigavon Borough, which equates to 10.1% of the 634 recorded in NI overall.



Total of 254 hate motivated incidents in the Borough in 2023/24 which accounted for 8.3% of the 3,070 recorded in NI overall.

Action	LEAD AND PARTNERS	CPSP Sub-Committee
Develop a coordinated action plan of programmes, projects and events across the Borough to build cultural awareness, celebrate diversity and strengthen good relations	Lead: Nicola Mahood, ABC Council Partners: SHSCT & NIHE Housing for All, CVSP	Tackling Poverty & Social Exclusion





Take£500+ celebration and learning event





ECONOMY ACTIONS

ENTERPRISING ECONOMY OUTCOME

Our borough is a productive centre of excellence for entrepreneurship, innovation and investment.

POPULATION INDICATORS

Business birth rates currently

8.2%

in Armagh City, Banbridge & Craigavon Borough

compared to 8.3% in NI overall (2023).



5 year survival rate

of new businesses born in 2018 was **50.4% in 2023** which was above the NI average of **47.7%**

Gross Value Added (GVA)

per hour worked (2022) estimated at



£33.75

Armagh City, Banbridge & Craigavon

£34.70

Northern Ireland

Action	LEAD AND PARTNERS	CPSP Sub-Committee
No actions identified for this outcome	N/A	N/A

INCLUSIVE ECONOMY OUTCOME

Everyone has a decent minimum living standard.

POPULATION INDICATORS



19.4% of children
living in relative low-income households
which is just slightly lower than the average
of 19.5% for NI (2023)

Gross Disposable Household Income

per head of population is estimated
at **£18,389** compared to **£18,685** in NI (2022)



The disability employment gap in 2023

was estimated at
40.5%
(NI gap 41.3%)



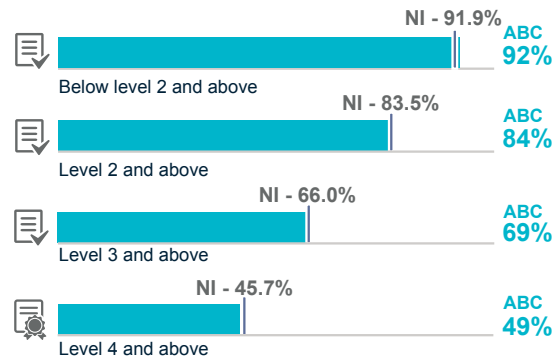
Action	LEAD AND PARTNERS	CPSP Sub-Committee
Promote initiatives to support achieving a decent minimum living standard for everyone	Lead: Chris Leech, CVS Panel Partners: ABC Council, Labour Market Partnership, Business Partnership Alliance, Community Advice ABC	Tackling Poverty & Social Exclusion
Raise awareness of housing issues in the borough, to include holding a housing conference	Lead: Sinead Collins, NIHE Partners: ABC Council Community Development, Environmental Health, Planning & Community Planning, NIFRS, CVS Panel, SHSCT & Social Housing providers	Tackling Poverty & Social Exclusion
Increase awareness of and access to support and services to prevent and mitigate poverty	Lead: Boyd McClurg, ABC Council & Crisis Support Network Partners: CYPSP, Family Support Hubs, CVS Panel, Connect Well Live Well Network	Tackling Poverty & Social Exclusion

SKILLED ECONOMY OUTCOME

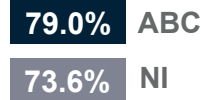
People are better equipped to take full advantage of the opportunities provided by the dynamic economy.

POPULATION INDICATORS

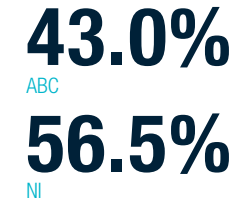
Qualifications of the workforce in employment (2022)



Employment Rate (Age 16-64)



FSME Students Achieving 5+ GCSEs (A* - C) including GCSE Maths & English (2022/23)



Action	LEAD AND PARTNERS	CPSP Sub-Committee
Address the barriers to accessing career opportunities for people experiencing disadvantage.	<p>Lead: Sarah Jane MacDonald, ABC Council</p> <p>Partners: Labour Market Partnership, CVS organisations, SRC</p>	Tackling Poverty & Social Exclusion







PLACE ACTIONS

CREATIVE PLACE OUTCOME

Our borough is an inspirational and creative place offering quality, inclusive arts, cultural and heritage experiences.

POPULATION INDICATORS

86%

of people (aged 16+) engaged in **arts/cultural activities** in the past year compared to 83% in NI (2023/24)



40
heritage
at risk assets saved since 2006
(19 since the baseline 2016) which accounts for almost 11% of the total of 366 saves in NI

Engagement in Arts & Culture (2023/24)

86% engaged in culture/arts activities in past 12 months in ABC (83% NI)

Action	LEAD AND PARTNERS	CPSP Sub-Committee
Deliver the Heritage Places Programme across the borough	<p>Lead: Shane Kelland, ABC Council</p> <p>Partners: DfC (HED) and SHSCT, Tourism NI and other partners to be confirmed</p>	Place Board

REVITALISED PLACE OUTCOME

Our distinctive, inclusive and vibrant urban and rural places are the heart of community and economic life.

POPULATION INDICATORS

Estimated Social Housing Need (2024-29)

Armagh City, Banbridge & Craigavon Borough



1,622 units

which accounts for 6% of the total need in NI (26,009)

City & Town Centre Vacancy Rates (31 Oct 2024)



ARMAGH

17.4%



BANBRIDGE

14.7%



CRAIGAVON

6.9%



DROMORE

25.2%



LURGAN

19.6%



PORTADOWN

20.9%



NI

22.8%

47.4% of people

in the Borough see town centres as safe welcoming places for people of all walks of life compared to 45.6% in NI overall (2021-23)



112,883 overnight trips

made by visitors from outside Northern Ireland (2023) which accounts for just 3.4% of NI's total of 3,303,348

Action	LEAD AND PARTNERS	CPSP Sub-Committee
Continue to roll out place plans	Lead: Lissa O'Malley, ABC Council Partners: Invest NI, DfC RDO and HED, NIHE, DfI, Local Economic Partnership, Tourism NI, Libraries NI, EA, Sport NI, BPA	Place Board
Identify local needs and projects for the Shaping Sustainable Places Programme	Lead: Paul Tamati, ABC Council Partners: DfC, DAERA and DfI	Place Board
Maximise the use of public and private land assets for industry, housing and other uses	Lead: named leads tbc ABC Council Partners: NIHE, Invest NI, DfC, EA, Private Landowners, DfI, Local Economic Partnership	Place Board
Deliver improvements to parks & open spaces	Lead: Claire Duddy, ABC Council Partners: sports clubs, local community groups	Place Board
Research infrastructure needs in the borough. Identify priorities and advocate for resources to deliver them	Lead: Sam Dalzell, ABC Council Partners: DfI, DAERA, SIB, Translink, DfC, NIHE, Invest NI, Rural Transport Providers, Sport NI	Place Board

SUSTAINABLE PLACE OUTCOME

We value and protect our climate, biodiversity and natural assets. People understand the need to mitigate and adapt to climate change, and our borough is on track to become net zero by 2050.

POPULATION INDICATORS

Estimated Households concerned with the environment (2023/24)

75% ABC **78%** NI



Soluble Reactive Phosphorus (SRP)

in rivers in Northern Ireland was measured at **0.062**mg/l in 2023



Per capita greenhouse gas emissions

in Armagh City, Banbridge and Craigavon Borough was **10.2**tCO₂e in 2022 compared to **9.8**tCO₂e in NI



Action	LEAD AND PARTNERS	CPSP Sub-Committee
Promote shared learning and collaboration on partner initiatives to reduce greenhouse gas emissions and promote biodiversity	<p>Lead: Claire Duddy, ABC Council</p> <p>Partners: SHSCT, EA, NIHE, SRC, DAERA, Invest NI</p>	Place Board
Deliver the PEACE AIR project	<p>Lead: Paul McCullough, ABC Council</p> <p>Partners: Letter of Offer partners Ulster University, Donegal County Council, University of Cork</p>	Place Board
Involve local people in improving water quality and improving peatlands in the borough through CALM and PEAT + projects	<p>Lead: Marcus Malley, ABC Council</p> <p>Partners: DAERA, UU, AFBI, UW, LA, TCV, NI Water</p>	Place Board



THE DROMORE PLACE PLAN

THE BIG IDEAS FOR DROMORE

Our ground-breaking Big Ideas have been identified that will transform future business and community life



1. TACKLING VACANCY AND DERELICTION

The way to future development within Dromore is to tackle the issue of vacant buildings and promote the reuse of sites. It is vital that these buildings and spaces are brought back into positive use, creating jobs, economic and sustainable development opportunities.



2. DULLYBURN LANDS

The green lands adjacent to Dullyburn Business Park are well placed in a strategic location off the M1 and along the Dublin Water Economic Corridor. There is an opportunity to attract and create strategic growth in these lands from the potential strategic planning. In the short term the potential of jobs such as industry and business, residential



3. DROMORE VIADUCT

This iconic structure, spanning across the River Lagan and within Dromore Park, also served as a vital link between freshwater and heritage for industry and economic development. This historical landmark offers a prime opportunity for restoration with a diverse array of benefits including heritage promotion, recreation, park development and community use.



4. RIVERSIDE DEVELOPMENTS

The River Lagan meanders through the heart of Dromore offering a wide variety of assets across the town including the river centre, Water and Family Dromore Park, the Community Centre and a variety of heritage features.



Dromore Place Plan public engagement

ABC COMMUNITY PLANNING PARTNERSHIP



We have formed a multisectoral partnership to oversee community planning in the Borough. The partnership is a broad and inclusive network made up of over 150 people from more than 80 organisations.

The structures are designed to support delivery of the partnership's thematic action plan and locality place plans. We will keep our partnership under review to ensure it supports the delivery of our actions.

COMMUNITY PLANNING STRATEGIC PARTNERSHIP (CPSP)

The CPSP has overall responsibility for community planning in Armagh, Banbridge & Craigavon. Membership includes the 12 Community Planning Partners⁵⁶ named in the legislation with duties to participate and four additional Support Partners⁵⁷ who are central to our local process.

CPSP SUB-COMMITTEES

There are four CPSP Sub-Committees. Their role is to drive the delivery of the community planning partnership's actions under each of the four themes:

- Promoting Good Mental Health and Wellbeing
- Tackling Poverty and Social Exclusion
- Place (includes locality Place Plans)
- Shared Leadership and Community Engagement

Membership includes CPSP and CVSP representatives, action leads and other partners who have an interest in the theme.

COMMUNITY & VOLUNTARY SECTOR PANEL (CVSP)

The CVS organisations play a key role in improving the quality of life in the Borough. CVSE organisations deliver services, are often the first to respond to crises and have a role in strengthening local communities. The Community & Voluntary Sector Panel was established in 2018 to ensure the involvement of these sectors as partners in community planning. The panel also has a role in connecting CVSE organisations from across the Borough. A steering group of up to ten members has responsibility for planning and taking forward actions on behalf of the panel. CVSP members are represented on all partnership structures and have leadership roles.

OTHER PARTNERSHIPS

We see our role as one of building connections and links between regional, sub-regional and other local partnerships. This is an evolving process to ensure that our efforts align, we avoid duplication, and we make the best use of the resources available to our Borough. There are a series of partnerships that already form part of the wider community planning structures. These include but are not limited to the Connect Well Live Well Network, the Age Friendly Alliance, the Labour Market Partnership, the Get Moving Partnership, the PEACE PLUS Partnership and the Participatory Budgeting (PB) Working Group. We will continue to create these links where we see the potential for added value for the people who live in the Borough.

⁵⁶ Armagh City, Banbridge & Craigavon Borough Council, Council for Catholic Maintained Schools, Education Authority, Northern Ireland Housing Executive, Invest Northern Ireland, Libraries NI, Northern Ireland Fire & Rescue Service, Police Service of Northern Ireland, Public Health Agency, Southern Health & Social Care Trust, Sport NI

⁵⁷ Business Partnership Alliance, Community & Voluntary Sector Panel & Department for Communities, Southern Regional College

PROGRESS TOWARDS OUTCOMES – SUMMARY

Below is a summary of the 28 population indicators presented throughout the document. These indicators are used to track progress towards the long-term outcomes in the community plan.

COMMUNITY	Influencing decisions	▼	Decrease in the % of people who feel they have an influence on decisions made in their neighbourhood to 19% in 2022-2024 from 32% in 2013-2015.
	Sense of belonging	▼	Decrease in the % of people feel a sense of belonging to their neighbourhood to 79% in 2022-24 from 90% in 2013-2015.
	Loneliness	▼	Increase in the % of people who feel lonely at least some of the time from 17.3% in 2017/18 to 22.3% in 2023/24
	Preventable deaths	—	At 162 preventable deaths per 100,000 population for the period 2019-23, this is slightly higher than the base year.
	Health inequalities - females Health inequalities -males	—	The gap in life expectancy between those living in the most deprived areas increased slightly from 1 year in 2012-14 to 1.1 years in 2021-23. The gap in life expectancy between those living in the most deprived areas has decreased slightly from 3.3 years in 2012-14 to 3.4 years in 2021-23.
	Sport & physical activity	▲	The percentage of people who participate in sport on at least one day per week has increased from 45% in 2012/13-2014/15 to 54% in 2023/24.
	Mental Health	—	The standardised prescription rate for mood and anxiety disorders has increased slightly from 21.1% in 2016 to 21.8% in 2023.
	Fear of crime	▲	In 2023/24, 77% of people report that fear of crime has a minimal impact on their quality of life, up from 69% in 2015/16.
	Accidental dwelling fires	▲	There were fewer accidental dwelling fires (64) in 2024 than in 2016 (86).
	Hate Motivated Incidents	▼	The number of hate motivated incidents in the borough has increased from 197 in 2013/14 to 254 in 2023/34
ECONOMY	Business survival rates	▲	The five-year business survival rate has increased from 38.6% for businesses born in 2010 to 50.4% for businesses born in 2018
	Business birth rates	—	At 8.2% in 2023, business birth rates are much the same as they were in the base year (8% in 2014).
	Productivity	▲	GVA per hour worked has increased from £22.20 in 2013 to £33.75 in 2023
	Poverty	—	At 23.1%, the percentage of children living in relative low-income families is just slightly lower than the base year (24.9%) having increased for the last 3 years.
	Employment gap for disabilities	▲	The disability employment gap has fallen from 50.6 percentage points in 2016 to 42.8 percentage points in 2024
	GDHI	▲	GDHI per head of population has increased from £15,382 in 2015 to £20,019 in 2023.
	Skill levels	▲	The percentage of the workforce in employment and qualified at all levels has increased since 2015
	Employment rate	▲	The percentage of the workforce in employment increased from 69% in 2015 to 79% in 2024
	Educational attainment	—	The percentage of FSME school leavers achieving at least 5 GCSE grades A*-C including GCSE English and Maths is relatively unchanged since the base year, 43.2% in 2023/24 compared to 43.6% in 2015/16.
PLACE	Arts and cultural participation	—	The percentage of people (aged 16+) engaging with arts/cultural activities in the past year is the same as the base year at 86% (2023/24).
	Heritage at risk	▲	The total number of buildings at risk saved has increased from 21 in 2016 to 35 by 2024.
	Social housing need	▼	The level of social housing need has increased to 1,622 units for the period 2024-29 which is more than five times the need estimated for the period 2015-20.
	City & town centre vacancy rates	▲	City and town centre vacancy rates decreased in all centres except Craigavon where they increased although remained lower than all other town/city centres in the borough.
	Town & city centre safety	▼	The % of people who saw town and city centres in NI as safe & welcoming for people from all walks of life decreased to 47% in 2022-2024 from 71% in 2014-2016.
	Overnight trips	—	The number of overnight trips made by visitors from outside NI has increased slightly since the base year to 113,674 in 2024, although when expressed as a % of total trips to NI this has fallen slightly.
	Household concern for the environment	▼	The level of public concern about environmental issues has fallen from 66% in 2015/16 to 63% in 2024/25.
	River Quality	—	Average SRP in Rivers in NI has increased slightly from 0.059mg/l in 2015 to 0.065mg/l in 2024
	Greenhouse gas emissions	▲	Per capita greenhouse gas emissions have fallen from 11.4t CO2e in 2015 to 9.3t CO2e in 2023

GLOSSARY

%	percentage
ABC Council	Armagh City, Banbridge and Craigavon Borough Council
AFBI	Agri-Food and Biosciences Institute
BPA	Business Partnership Alliance
CHS	Chest Heart and Stroke
CPSP	Community Planning Strategic Partnership
CVSE	Community, Voluntary and Social Enterprise Sector
CVSP	Community and Voluntary Sector Panel
CWLW	Connect Well Live Well
CYPSP	Children & Young Peoples Strategic Partnership
DAREA	Department of Agriculture, Environment and Rural Affairs
DfC	Department for Communities
DfC HED	Department for Communities – Historic Environment Division
DfI	Department for Infrastructure
EA	Education Authority
FSME	Free School Meals Entitlement
GDHI	Gross Domestic Household Income
GVA	Gross Value Added
JBO	Jobs and Benefits Office
LA	Loughs Agency
LEP	Local Economic Partnership
LMP	Labour Market Partnership
NI	Northern Ireland
NIFRS	Northern Ireland Fire & Rescue Service
NIHE	Northern Ireland Housing Executive
NR	Neighbourhood Renewal
PB	Participatory Budgeting

PGMHWB	Promoting Good Mental Health and Wellbeing
PHA	Public Health Agency
PSNI	Police Service of Northern Ireland
SHSCT	Southern Health and Social Care Trust
SIB	Social Investment Board
SLCE	Shared Leadership & Community Engagement
SRC	Southern Regional College
SRP	Soluble Reactive Phosphorus
TBC	To be confirmed
TCV	The Conservation Volunteers
TNI	Tourism Northern Ireland
TPSE	Tackling Poverty & Social Exclusion
UU	Ulster University
UW	Utility Warehouse





DEVELOPED BY





COMMUNITY PLANNING TEAM

Old Technical School
3 Downshire Road
Banbridge BT32 3JY

☎ 0300 0300 900

✉ communityplanning@armaghbanbridgecraigavon.gov.uk

🌐 armaghbanbridgecraigavon.gov.uk/communityplanning