

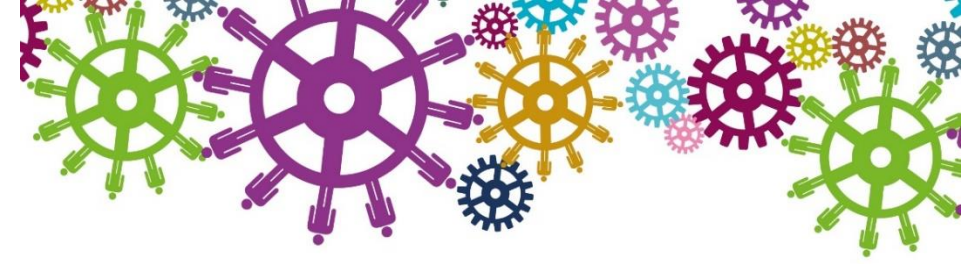


ABC Community Planning Strategic
Partnership Meeting
16 April 2024
Lough Neagh Discovery Centre



Agenda Item 3

Statement of Progress 2021-23:
Recommendations from Chairs' & Vice-
Chairs' Group



ABC Community Planning Statement Progress 2021-2023 video





Scope of Review

- **Outcomes**
9 long-term outcomes
- **Population Indicators**
19 indicators + 3 new mental health and poverty
- **Cross-cutting themes**
Connectivity/Equality/Sustainability
- **Ways of working**
- **Actions**



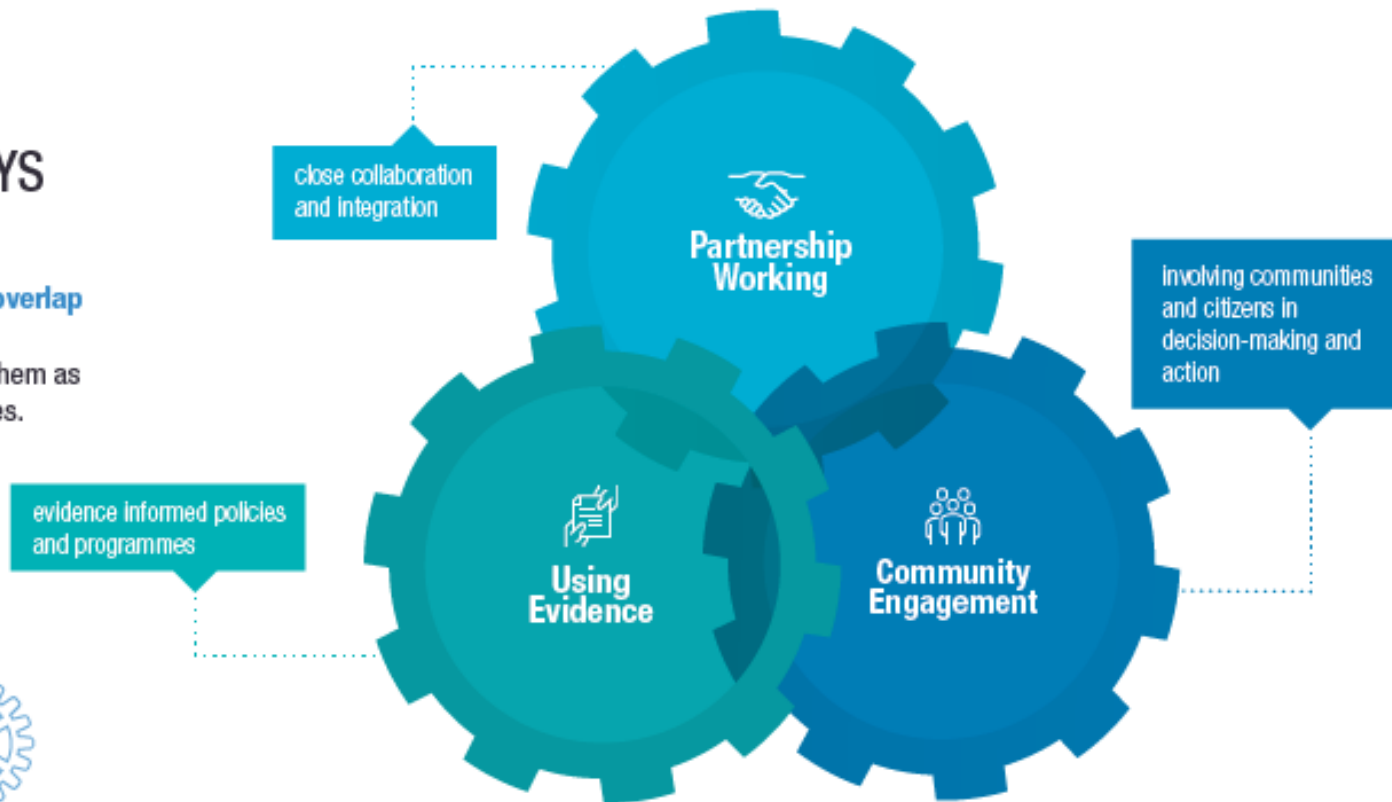
Connected: **A Community Plan** **for Armagh City,** **Banbridge &** **Craigavon Borough** **2017-2030**



02 COMMUNITY PLANNING APPROACH

COMMUNITY PLANNING REQUIRES WAYS OF WORKING.

These **ways of working** overlap with each other and our partnership has adopted them as an approach to its activities.



ABC CPP Action Plan





Stage 1: Scope and Planning

- February to April

Stage 2: Engagement & Research

- From March to June

Stage 3: Review Evidence & Feedback – Draft Reviewed Plan

- June

Stage 4: Approvals

- From July to August
- Internal partner approvals 3rd July to 10th Aug
- CPSP approval late Aug

Stage 5: Public Consultation, Final Approvals & Launch

- By End of August to December (Considered by Council & CPSP mid-November)



Agenda Item 5

Input into SHSCT Corporate Strategy

Janet Mc Conville

Assistant Director of Corporate Planning,
SHSCT



Southern Health
and Social Care Trust

Quality Care - for you, with you

Our Vision & Strategy 2030

Approach and Progress to Date

ABC Community Planning Partnership

Janet Mc Conville, Assistant Director of Corporate
Planning, SHSCT

The Compelling Narrative

The Compelling Narrative

- Looking Back to Move Forward
 - ✓ *Build on the positives*
 - ✓ *Learning from External Reviews*
- Listening to the voices of our staff and service users
- Improving our culture – supporting our people

Culture and leadership subgroup

They told us:

- we needed a long term vision;
- the culture of the organisation needs to change from performance/top down and be driven by Safety and Quality, and greater engagement of staff;
- they wanted to help us move forward as a Trust, and that the difficult issues we are facing can be used as a burning platform for change; and
- we needed to draw a line in the sand and move forward to a more hopeful future.



Our Approach

Strategy Development

ONE VISION: ONE STRATEGY

- The vision must be clear and easily understood by all stakeholders – what will be the same/ what will be different
- **Co produced** with staff, patients/service users, carers and wider stakeholders
- Supported by plans: Financial; People; Operational; Digital
- Focused effort and commitment to the journey
- This is a journey, not an end point

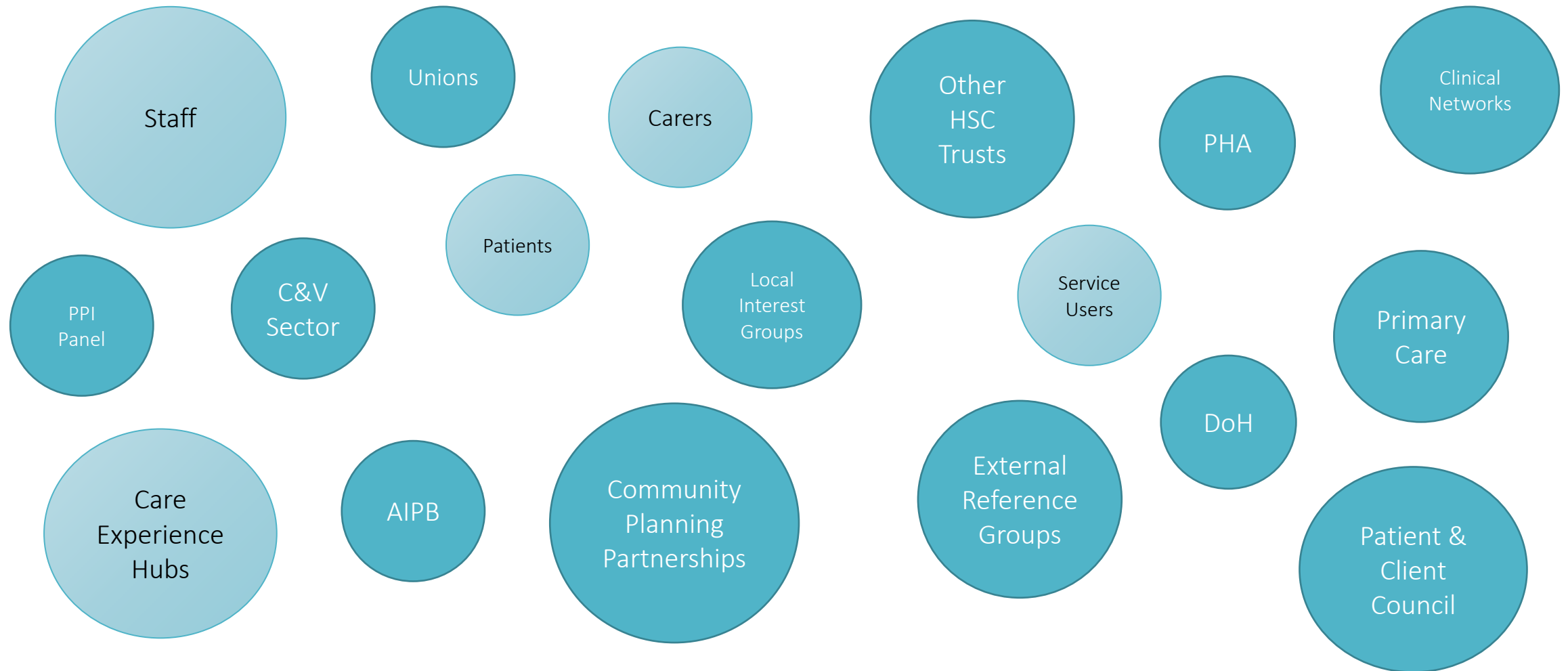
Engagement & Buy-in

Building Carefully
Together

- Strong Leadership
- Start engagement early and stay consistent with messaging
- Clinical Buy-in and engagement – often and throughout
- Demonstrate we are listening – ‘You Said, We Did’
- What do our patients & Service Users Value – The Citizens Panel
- Use of Mega Panels to facilitate many voices
- Regular touchpoints, milestones and evidence of progress

Co Production Approach

We will listen and evidence that we have done so



Co Production Progress

We will listen and evidence that we have done so

Trust Board Workshop – 9th November

- Feedback on Engagement Plan
- Principles of the Strategy Development
- Agree Strategic Intentions

Trust Senior Leaders – 17th November & 1st December

- Communicate the Compelling Narrative
- Guiding Principles
- Buy-in to the journey
- Development of the Engagement Plan
- Strategic Intentions
- Introduction of ‘Community of Leaders’



Working together



Excellence



Openness & Honesty



Compassion

Co-Production - Progress

Leadership Workshop 1
Nov '23 Seagoe Hotel
c.130 attendees



Follow up session with
Senior Leadership Team

Leadership Workshop 2
Dec '23 Canal Court
Hotel
c.80 attendees



Be Accountable
Promote the Trust's culture, values, and
behaviours
Translate OUR vision into action.

Actively engage in the process.
Communicate the message and
encourage others to sign up
Promote our 4 Guiding Principles



Working together



Excellence



Openness & Honesty



Compassion

Co Production Progress

We will listen and evidence that we have done so

Trade Union Session – November JNCF

Focused/ Themed Engagement - ongoing

- Children & Young People
- Mental Health & Disability
- Adult Community Services
- Surgery & Clinical Services
- Medicine & Unscheduled Care

Wider Workforce Engagement

- All Staff Disciplines – Roadshow (4 in person and 2 virtual)
- Community of Leaders

External Stakeholders

- Primary Care – Southern FSU
- Service Users & Carers Session

Southern i

Chat with the Chief

Webpage

Podcasts



Working together



Excellence



Openness & Honesty



Compassion

Co Production Next Steps

We will listen and evidence that we have done so

Crowdsourcing/ Mega-panels

Further Focused/ Themed Engagement

Wider Stakeholders

- Community & Voluntary sector Workshop
- C&V Sector Networks
- Care Experience Hubs – the Patient Voice
- Community Planning Partnerships
- Area Integrated Partnership Board
- DoH/SPPG/PHA
- Political Representatives

Southern i

Chat with the Chief

Webpage

Podcasts



Working together



Excellence



Openness & Honesty



Compassion

Engagement to Date

Over 400
people have
engaged with
us to date...

Internal Groups

Community of Leaders

- Leaders from Across the Organisation – all grades and service areas
- Champions for the Strategy and for Cultural Change
- Volunteers and nominations
- Point of Contact to share out information and gain feedback

Senior Leaders Network

- Directors; Assistant Directors; Heads of Service; Divisional Medical Directors; Clinical Directors

Clinical Reference Group



Southern Health
and Social Care Trust

Quality Care - for you, with you

The Principles



Working together



Excellence



Openness & Honesty



Compassion

Strategy Development Principles

Ensuring safer care and improving quality is our top priority

Delivering the best outcomes, best experience and safer care through a culture of continuous quality improvement

Invest our resources where they add most value

We will align our resources to where we will deliver the greatest benefit to our patients and clients and purposefully prioritise to maximise outcomes.

We will follow through on our agreed actions.

We will ensure we will do what we say, so that we deliver successfully on the commitments of our Vision & Strategy.

Strengthen our relationships and listen to understand and learn.

Continue to build on our internal and external relationships using a co-production approach, welcoming new ideas with a willingness to change how we delivery services.



Working together



Excellence



Openness & Honesty



Compassion



Southern Health
and Social Care Trust

Quality Care - for you, with you

Next Steps



Working together



Excellence



Openness & Honesty



Compassion

Next Steps

- Agree Vision Statement
- Agree Themes for inclusion in the Strategy
- Set up Programme Structure and Workstreams
- Development of the Vision Statement & Strategic Framework Document (to Trust Board in June)

Next Steps

- Development of Year 0 Plan for 24/25 – Stabilisation
- Development of Years 1-5 Plan
- Development of Enabling Plans:

Our People & Organisational Development Plan

Our Working Together Plan

Our Financial Plan

Our Digital Plan

Our Infrastructure Plan

Our Health and Wellbeing plan

Quality Improvement Plan



Working together



Excellence



Openness & Honesty



Compassion

Discussion

- How do we engage moving forward?
- How do we work with the CPP to inform our Strategy development & implementation?



Agenda Item 6

Climate and Health in ABC

Paul Mc Gurnaghan

Public Health Agency

Our Health and Our Place

The urgency of protecting our planet for
protecting our people

Paul McGurnaghan, Public Health Agency

16th April 2024



Outline of this presentation

It's
warming

It's us

We're sure

It's
bad for
health

We can
fix it





It's
warming

It's us

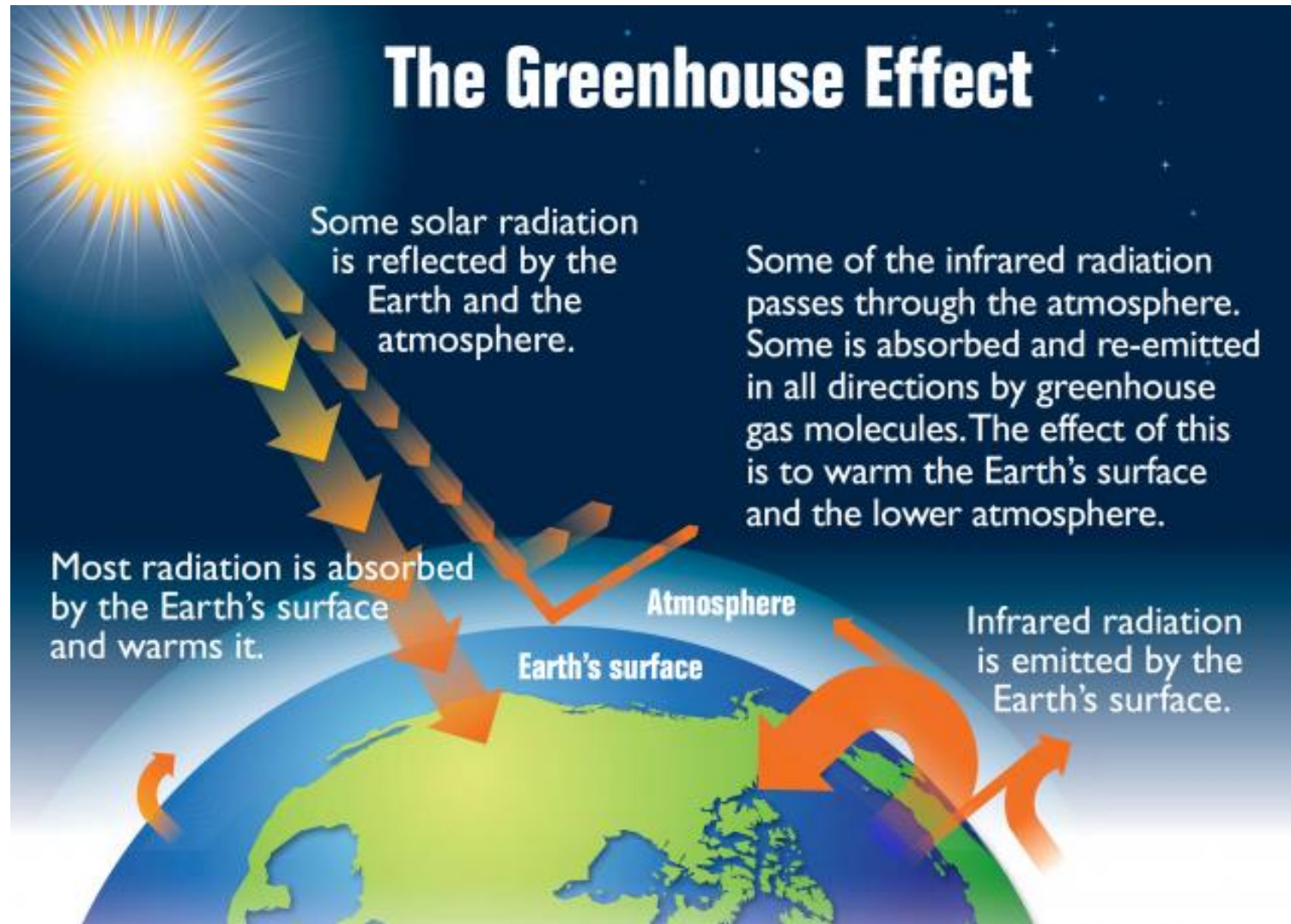
We're sure

It's
bad for
health

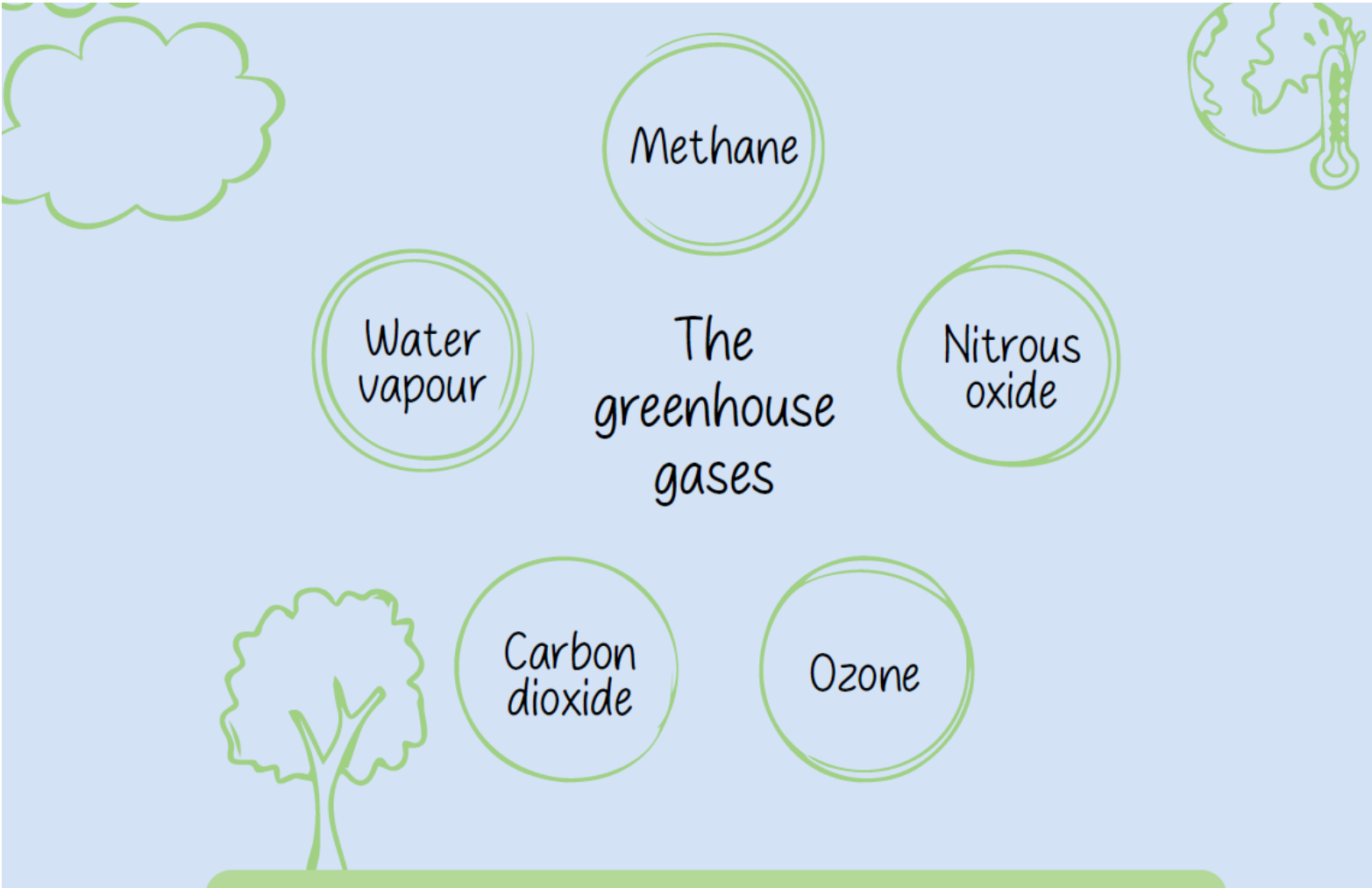
We can
fix it



The greenhouse effect



The greenhouse effect







Biodiversity

55%

of features within protected areas are in favourable condition in 2022/23.



Farming
29%



Domestic
18%



Industry
18%

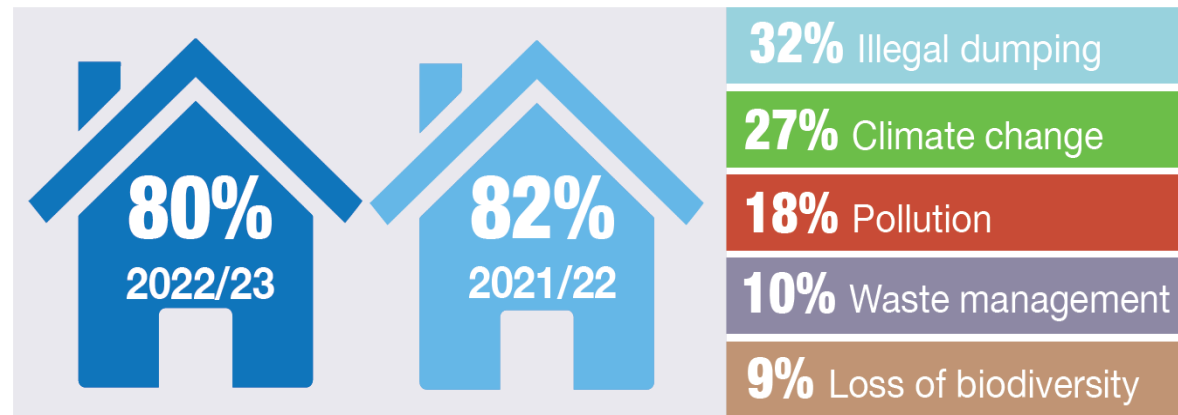
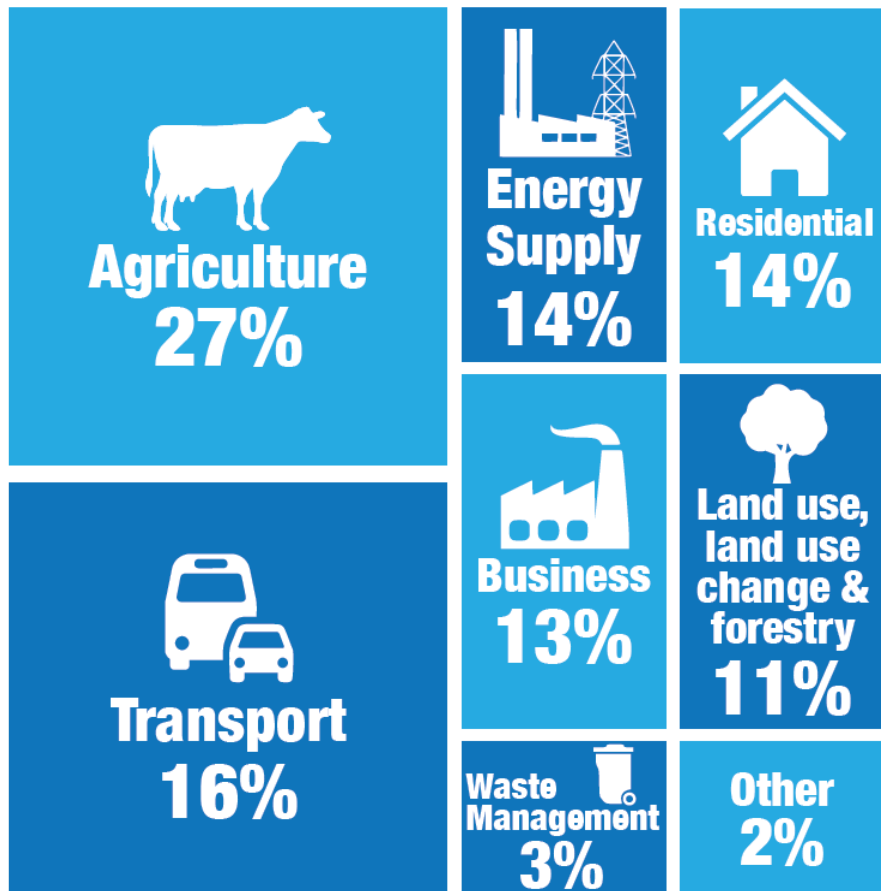


NI Water
14%



Other
22%

Source of substantiated water pollution incidents 2022



Households concerned about the environment 2022/23 and 2021/22

Problems considered most important

2020 NI Greenhouse Gas emissions 20.9 MtCO₂e



It's
warming

It's us

We're sure

It's
bad for
health

We can
fix it

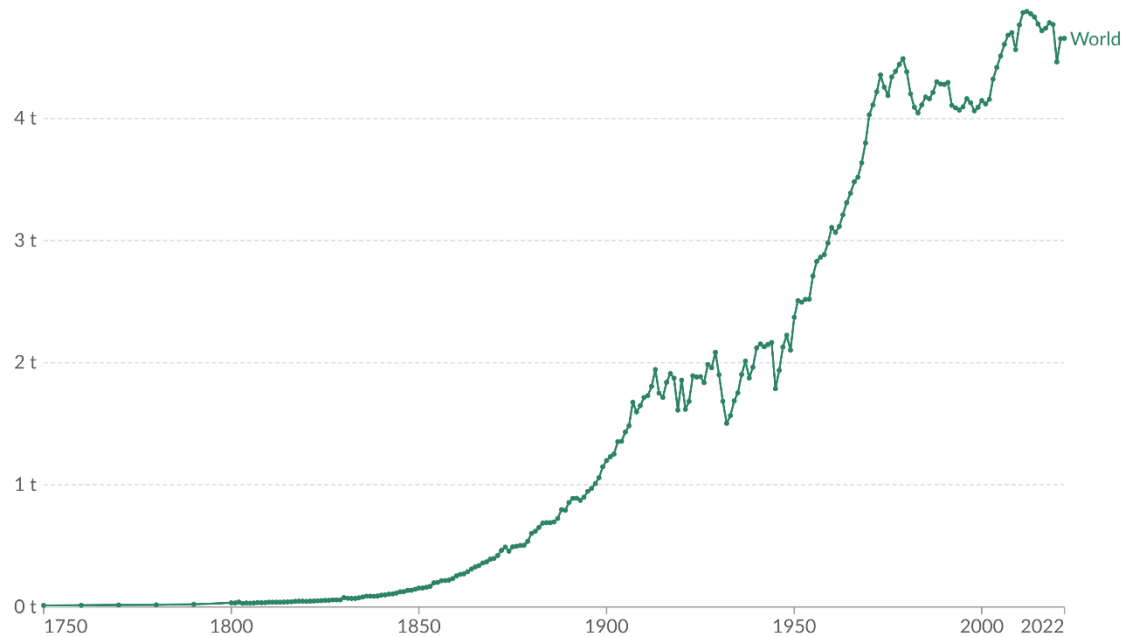


CO2 emissions and global temp since 1800

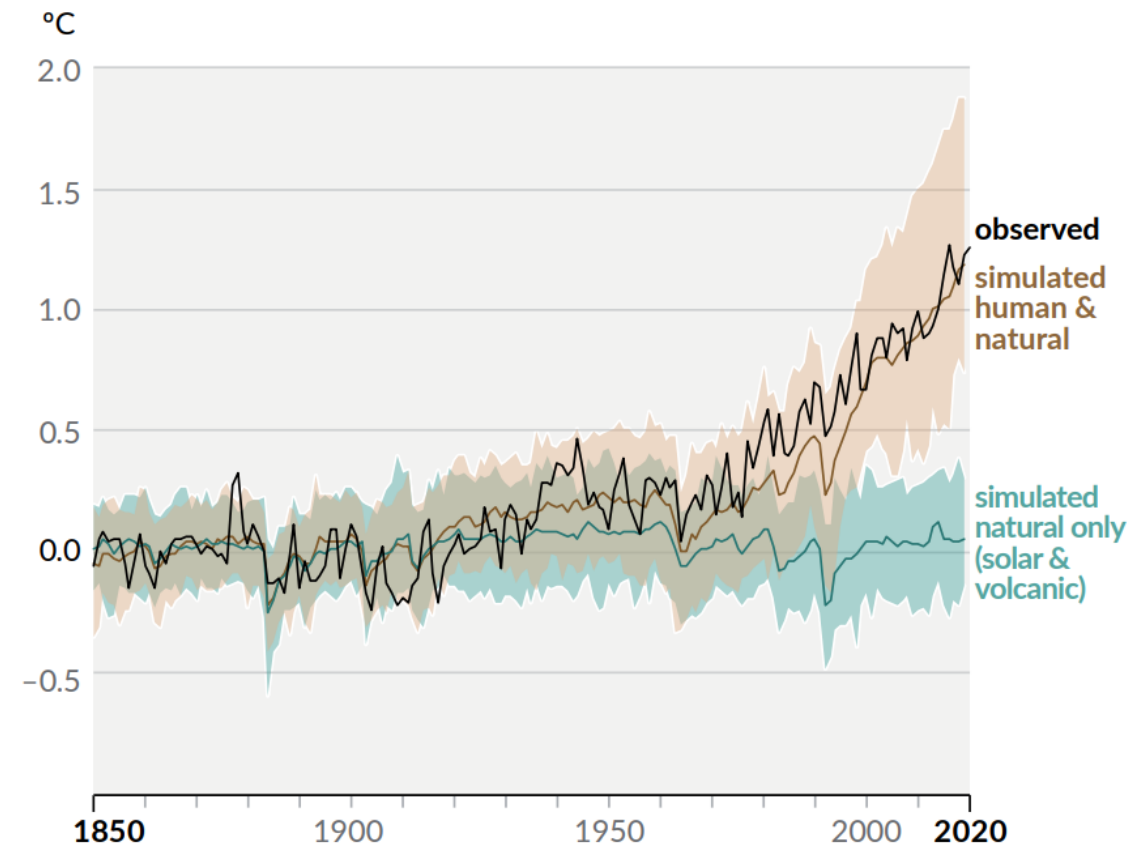
Per capita CO₂ emissions

Carbon dioxide (CO₂) emissions from fossil fuels and industry¹. Land-use change is not included.

Our World
in Data

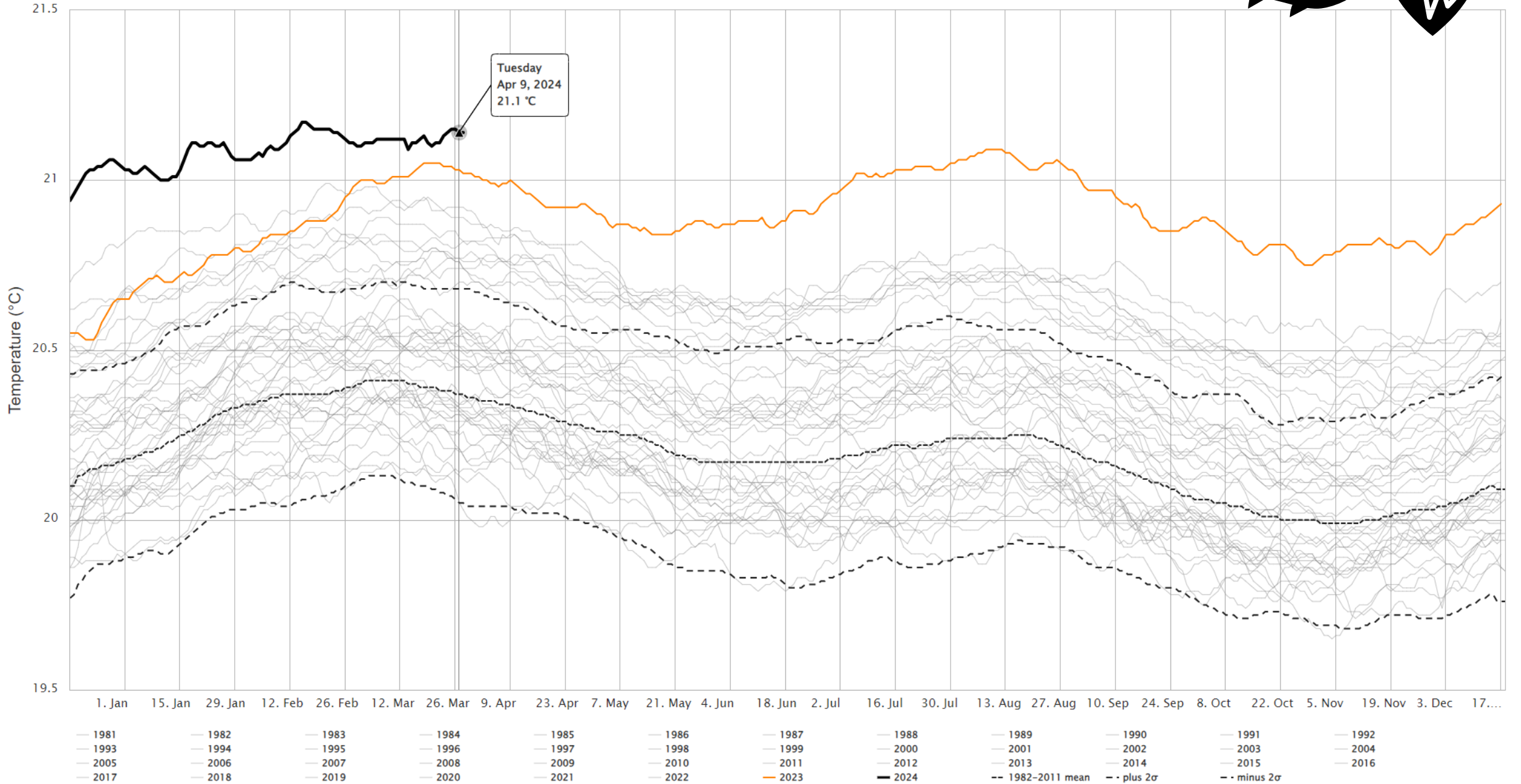
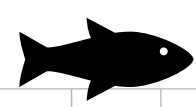


(b) Change in global surface temperature (annual average) as **observed** and simulated using **human & natural** and **only natural** factors (both 1850–2020)



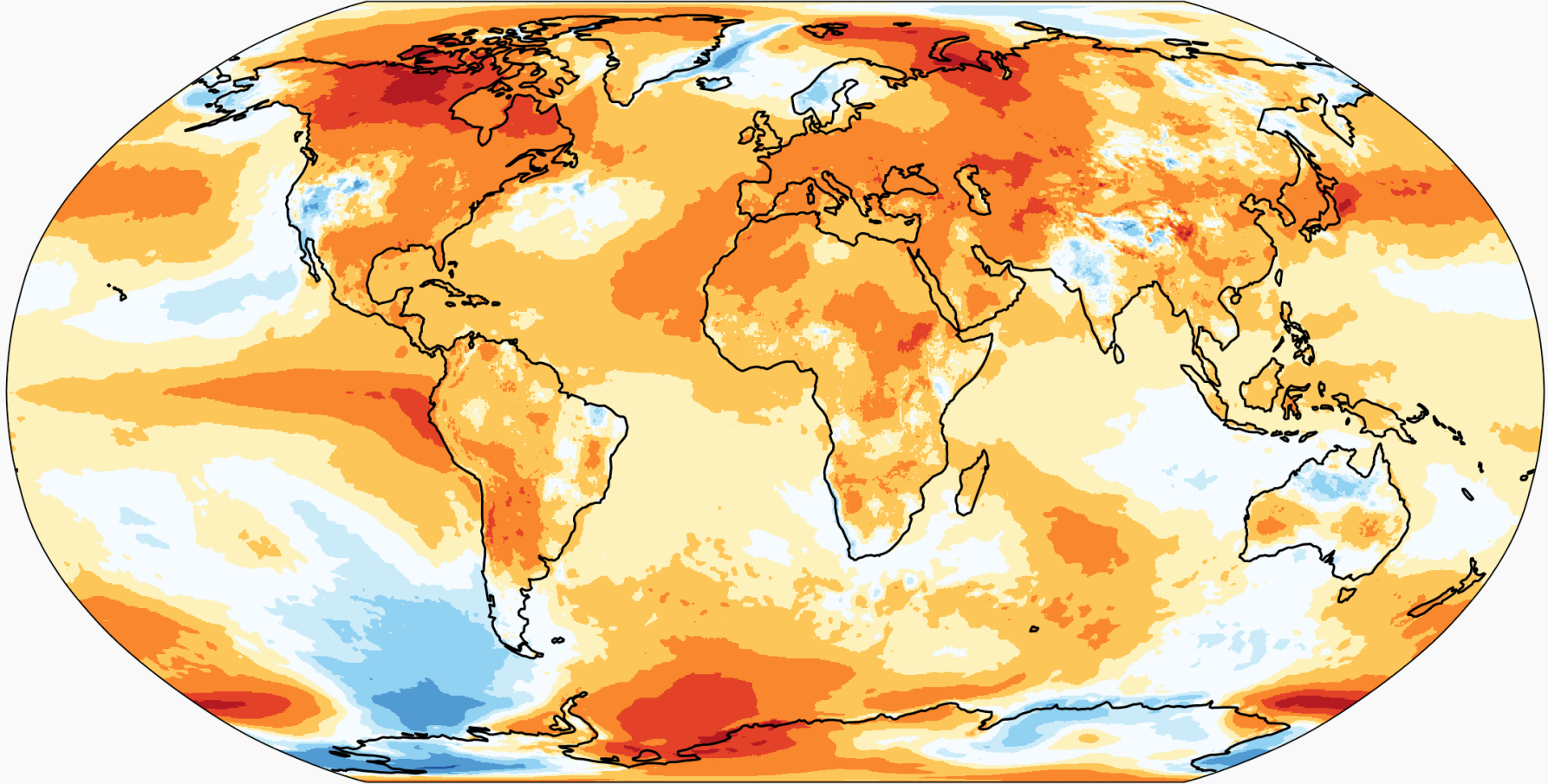
Daily Sea Surface Temperature, World (60°S–60°N, 0–360°E)

Dataset: NOAA OISST V2.1 | Image Credit: ClimateReanalyzer.org, Climate Change Institute, University of Maine

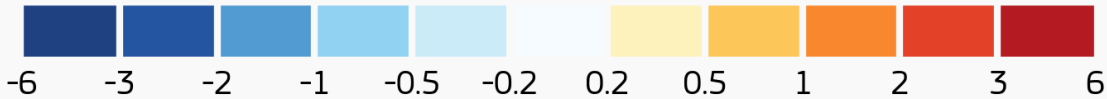


SURFACE AIR TEMPERATURE ANOMALY • 2023

Reference period: 1991–2020 • Data: ERA5 • Credit: C3S/ECMWF

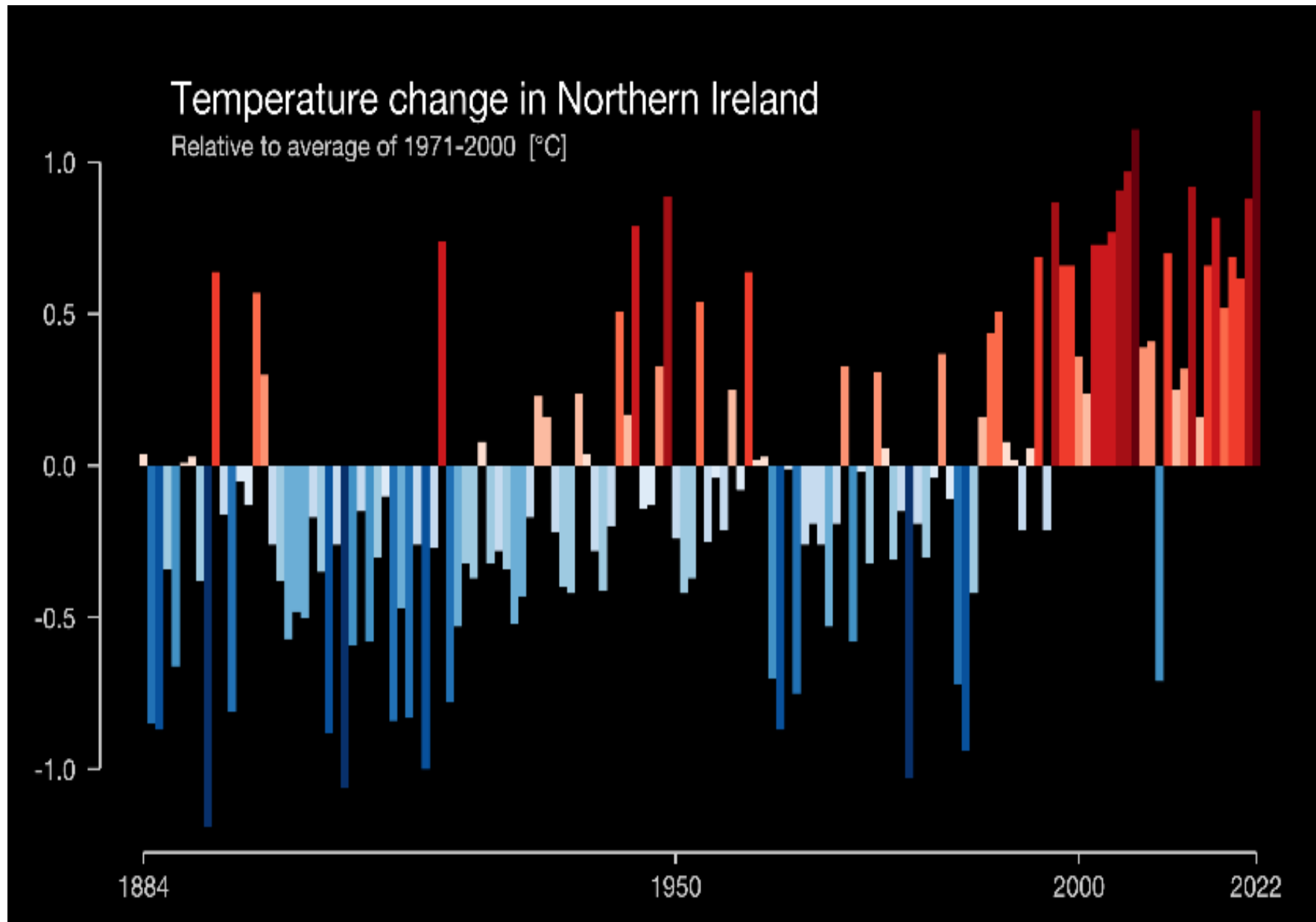


Temperature anomaly (°C)



PROGRAMME OF THE EUROPEAN UNION



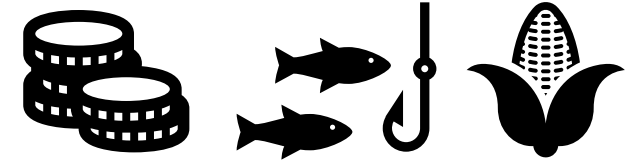


Show Your Stripes, Professor Ed Hawkins, University of Reading: <https://showyourstripes.info/>



Bad for our health and wellbeing

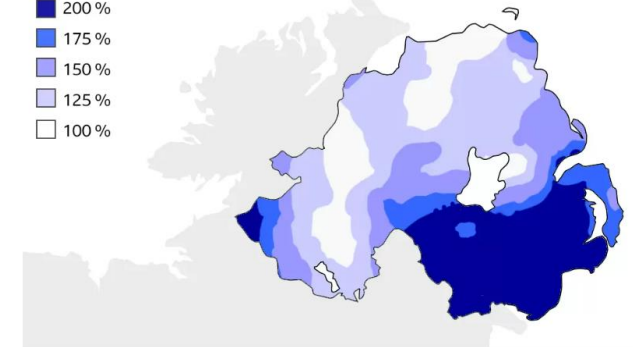
Directly and indirectly



- Direct effects due to extremes of weather: heat, floods, fire
- Worsening air pollution
- Reduced crop yields
- More infectious disease & antibiotic resistance
- More migration
- Increasing pressure on health and public services
- Anxiety
- Crime
- Widens inequalities



Total rainfall in October 2023
Shading shows percentage of 1991 to 2020 Average



Source: Met Office

BBC

Lough Neagh: Blue-green algae at 'level not seen since the 1970s'

© 28 June 2023



Potato farmers warn of potential shortages and price rises

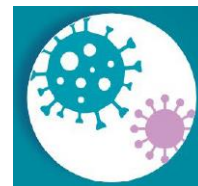


The wet weather has disrupted work in the fields

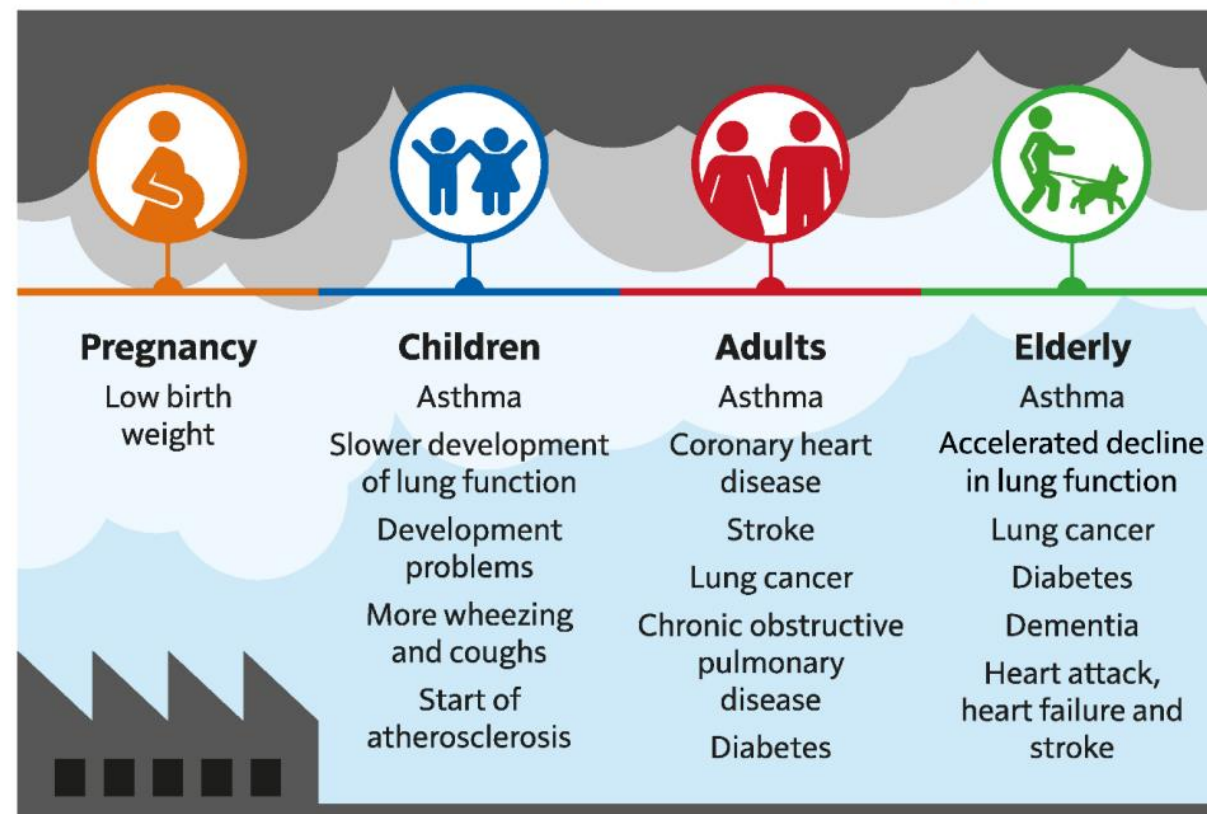
Bad for our health and wellbeing

Directly and indirectly

- Direct effects due to extremes of weather: heat, floods, fire
- Worsening air pollution
- Reduced crop yields
- More infectious disease & antibiotic resistance
- More migration
- Increasing pressure on health and public services
- Anxiety
- Crime
- Widens inequalities



Health effects of air pollution throughout life



Is inaction fair for our children?

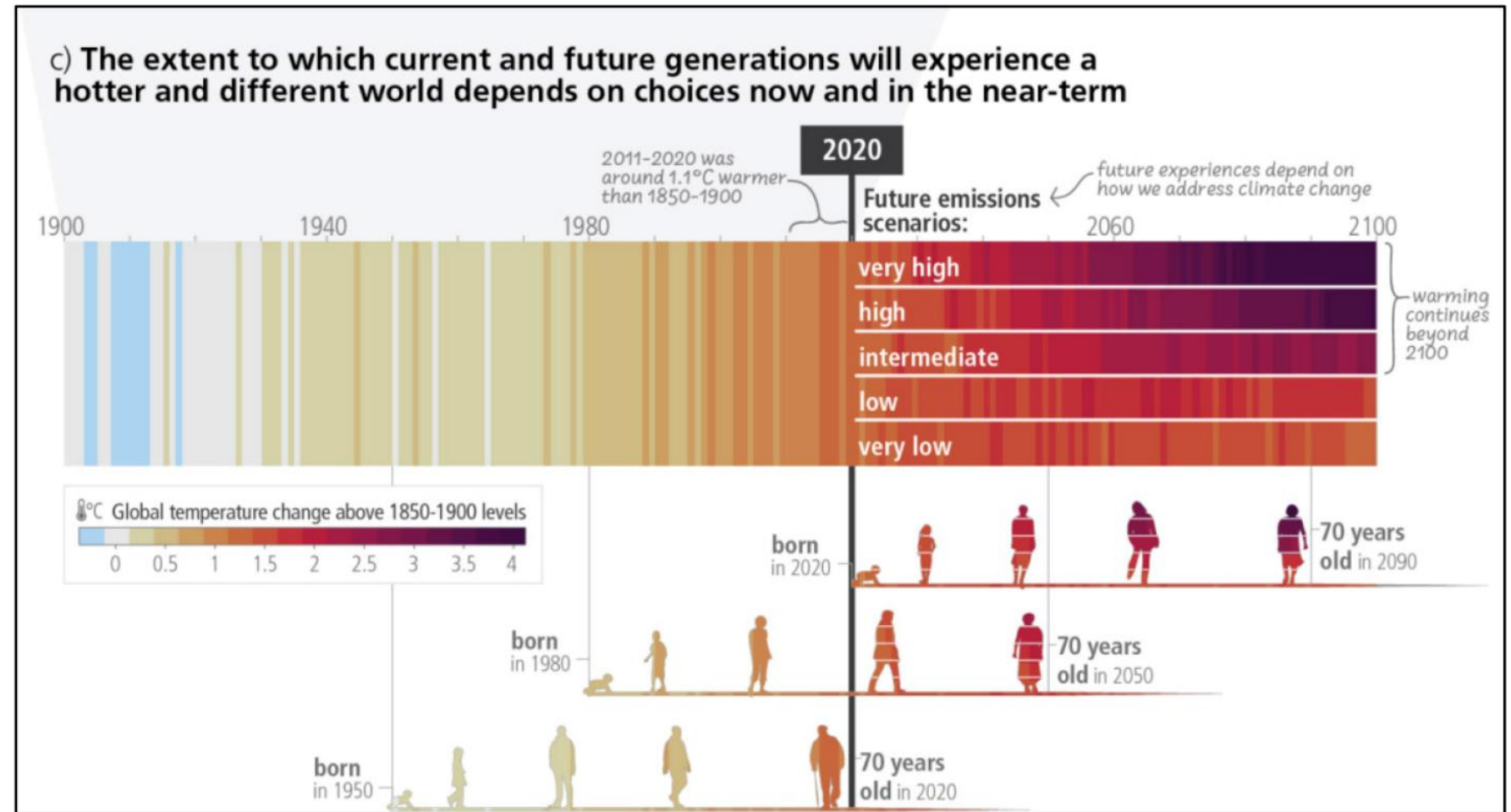


Figure 1: Future climate trajectories, from the Intergovernmental Panel on Climate Change 6th Assessment Report (Synthesis Report, 2023)



It's
warming

It's us

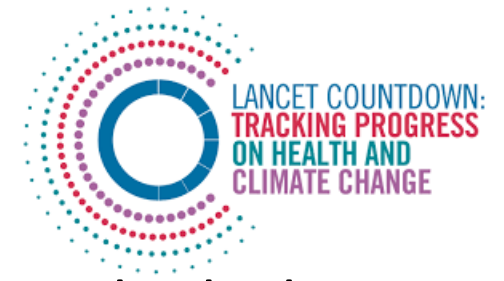
We're sure

It's
bad for
health

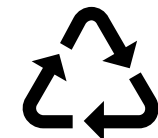
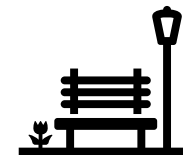
We can
fix it



Solutions



- ✓ Make it easy for people to walk, cycle or take the bus / train. Think about this when designing local spaces.
- ✓ Protect the blue / green assets you have, and restore those you've lost.
- ✓ Encourage people to eat more healthy, locally-produced plant-based foods. Support local farmers to transition to sustainable practices (eg local food sector initiatives).
- ✓ Reduce the burning of fossil fuels and find ways to support renewable energy in your area. Find ways to make homes healthier, balancing insulation and ventilation
- ✓ Reduce waste
- ✓ Educate the local population
- ✓ Ensure everyone can benefit



Solutions can provide early gains for health and wellbeing



Improved air quality



Increased physical activity



Improved mental health



Reduced urban heat effect

Solutions: win, win, win



- Population health
- Local environment
- Local economy



It's
warming

It's us

We're sure

It's
bad for
health

We can
fix it



Resources and references



- US Environmental Protection Agency
- NI Environmental Statistics, DAERA / NISRA 2023
- Our World in Data
- Intergovernmental Panel on Climate Change
- Climate Change Institute, University of Maine: [ClimateReanalyser.org](https://climate.reanalyser.org)
- Climate Change Service: climate.copernicus.eu
- Show Your Stripes, Professor Ed Hawkins, University of Reading: <https://showyourstripes.info/>
- BBC News online
- Health Matters: Air Pollution (Public Health England 2018): <https://www.gov.uk/government/publications/health-matters-air-pollution/health-matters-air-pollution>
- Special Report on Climate and Health (WHO 2021)
- Lancet Countdown on health and climate change 2023
- Communicating on climate and health. Toolkit for health professionals. (WHO 2024)

Thank you.
Questions?

