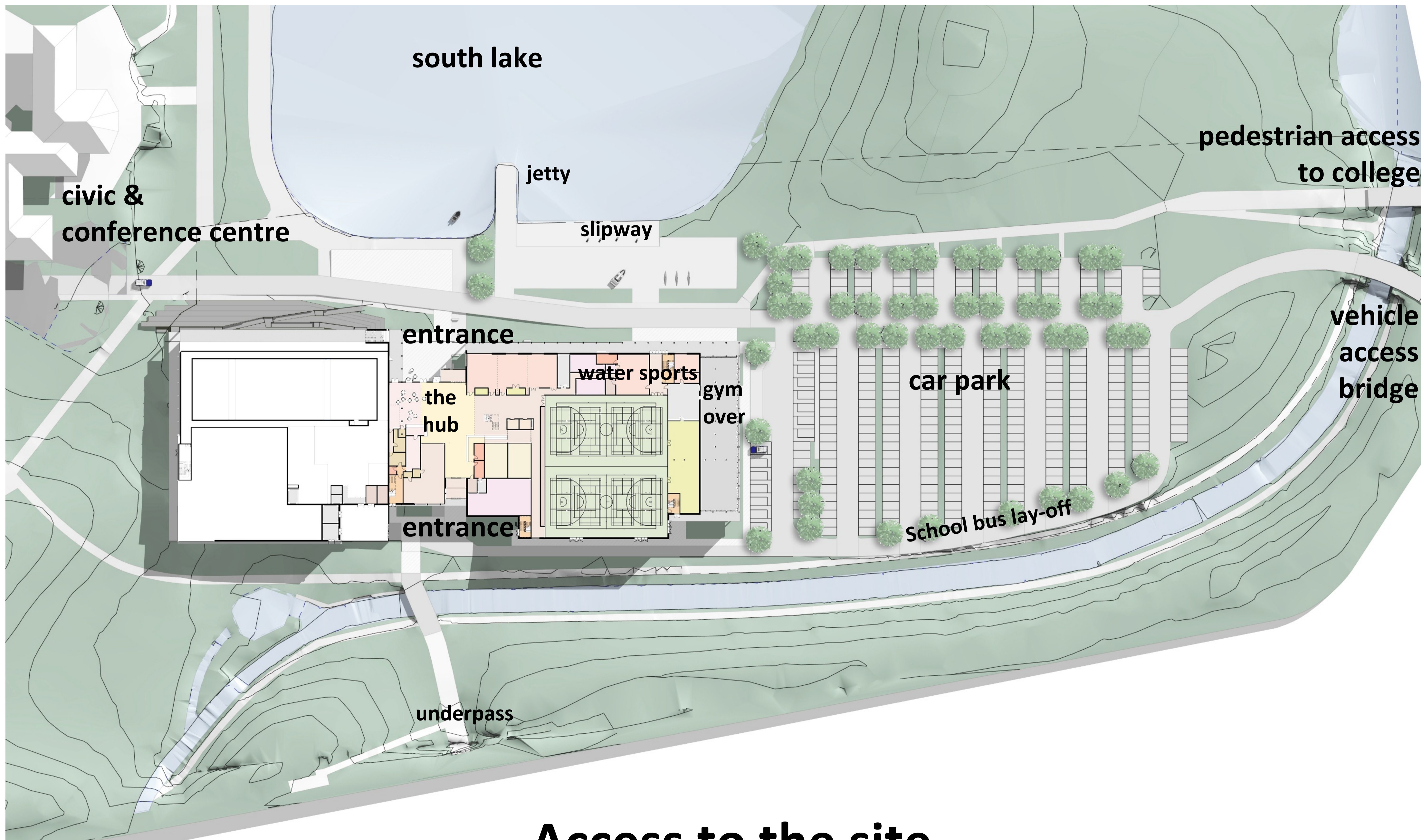


# South Lake Leisure Centre Design proposals



Armagh City  
Banbridge  
& Craigavon  
Borough Council





**Access to the site**



**Entrance with outdoor piazza**



**8 lane swimming pool**



300 bleacher  
seats

Under  
floor  
heating

Ability to  
be divided

Plenty of  
Storage

Heating and  
lighting controls

Wood  
sprung floor

Marking for  
many sports

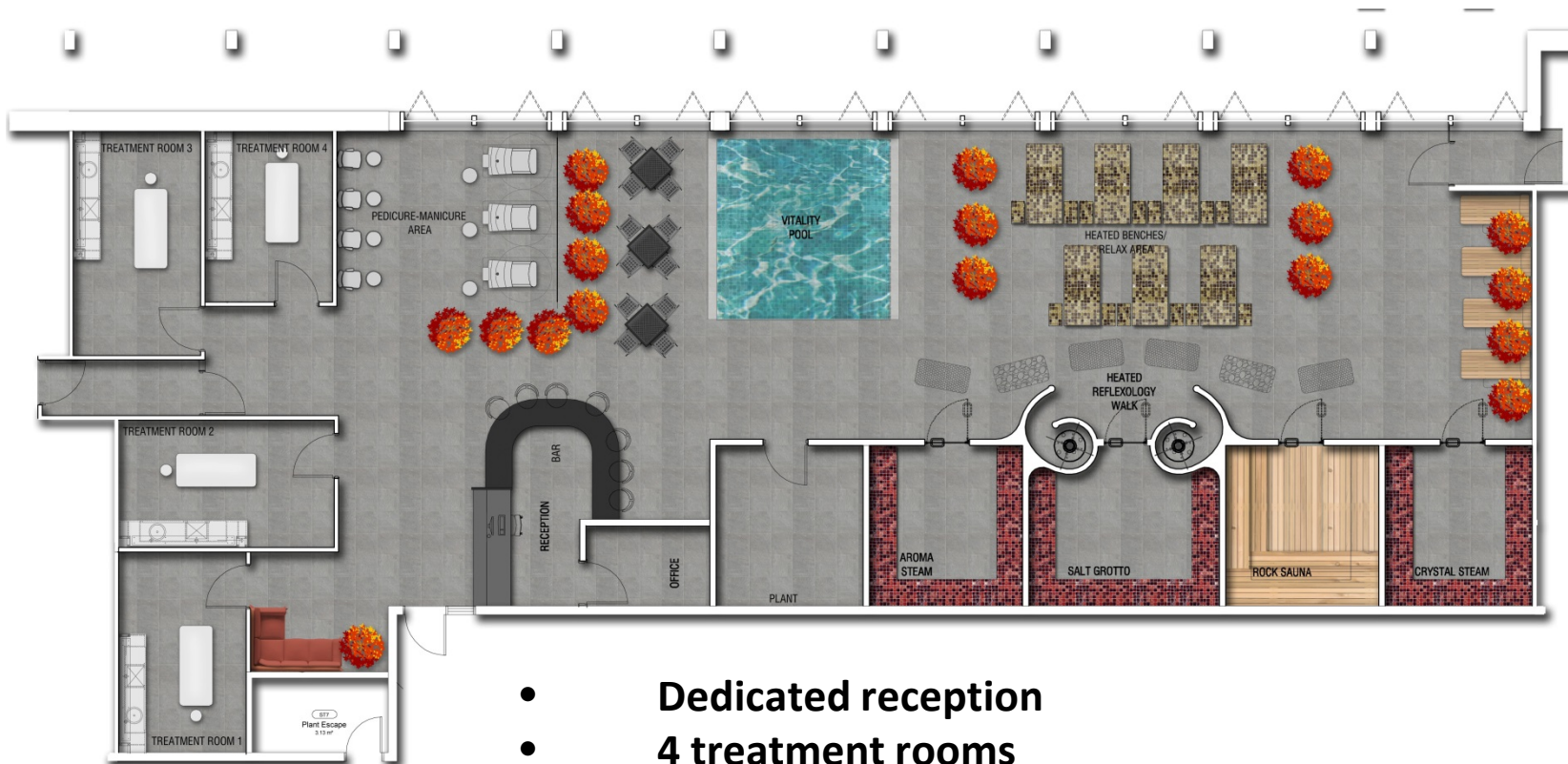
## 8 court sports hall



**Gym with panoramic views**



**Health suite changing area**



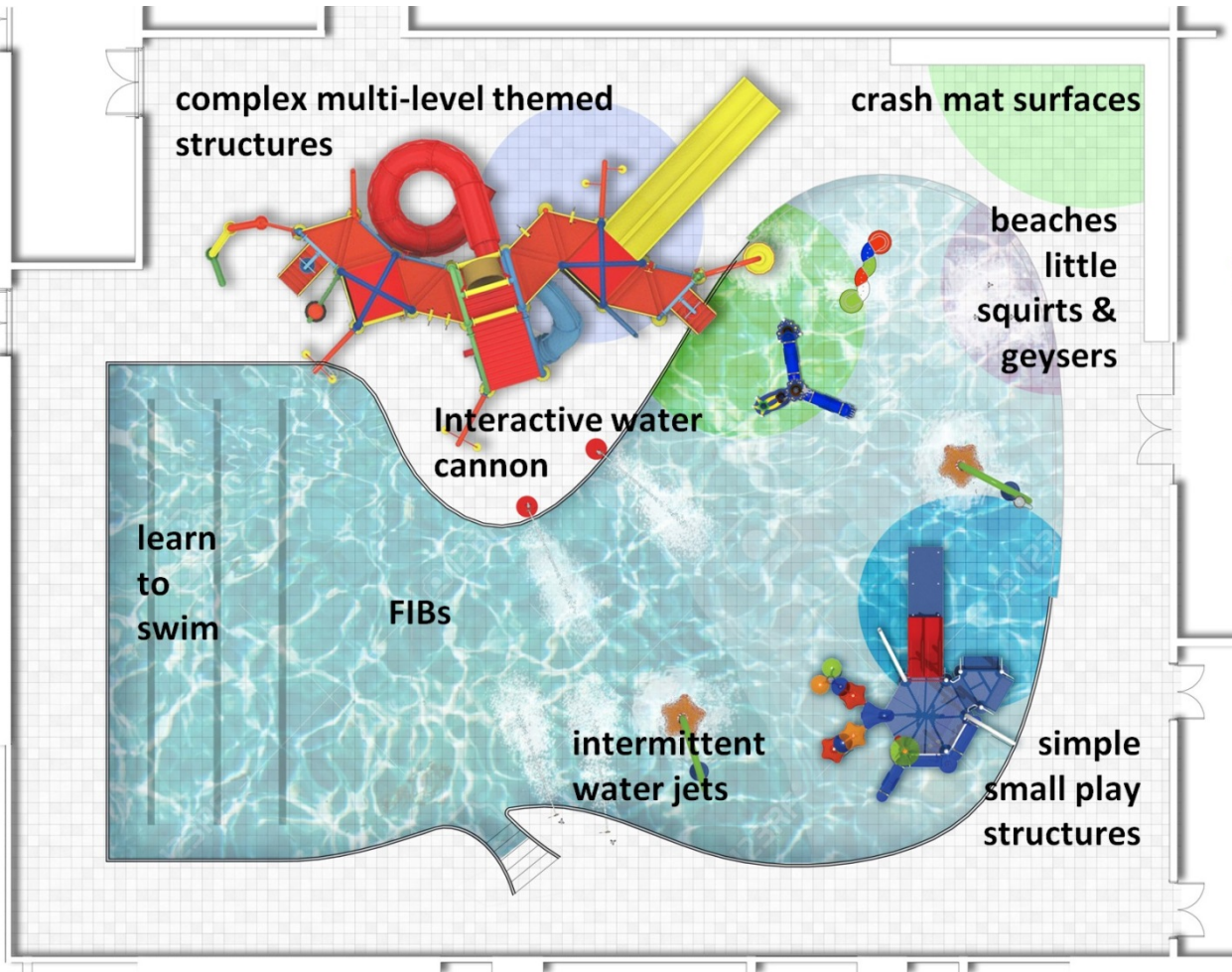
- **Dedicated reception**
- **4 treatment rooms**
- **Manicure, pedicure & beauty**
- **Juice bar**
- **4 heat experiences**
- **Hydrotherapy pool**
- **Heated loungers**
- **Relaxation spaces**

# Health suite layout and features





**Pool with inflatables**



# Indoor water play area with inflatables



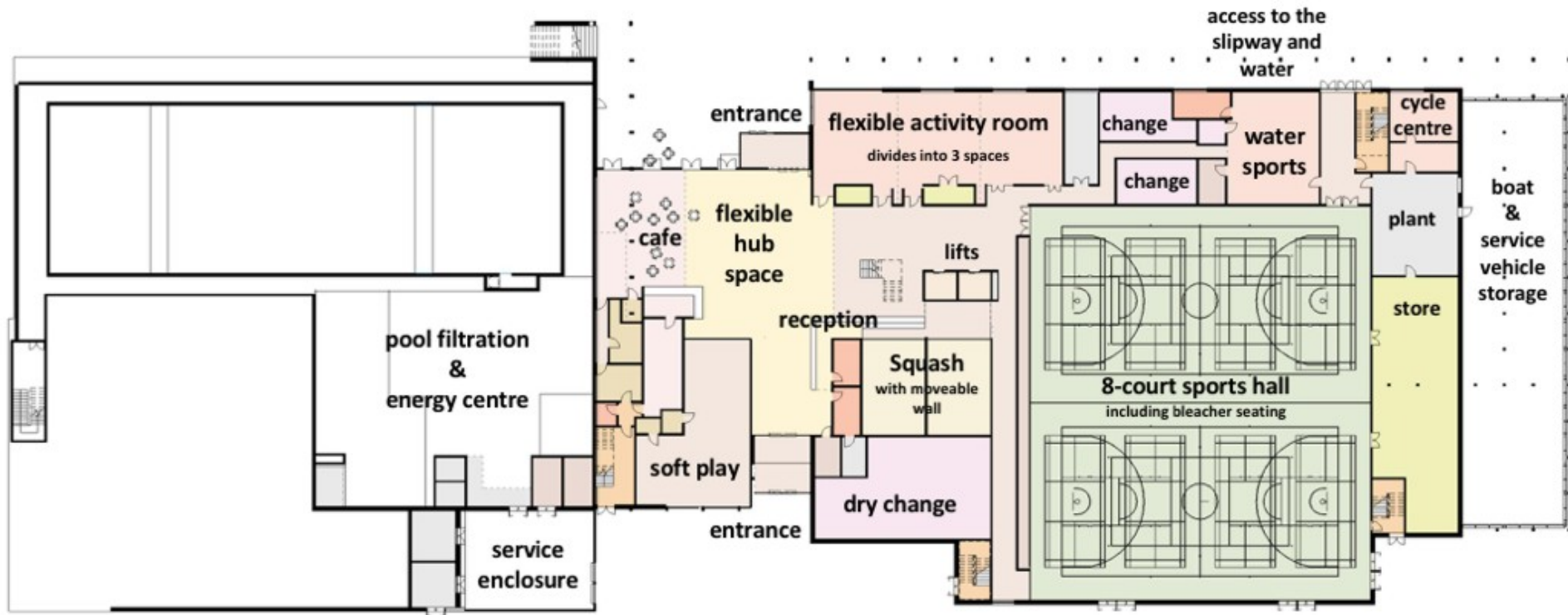
**Indoor play and central hub**



**Large multi-functional activity rooms**

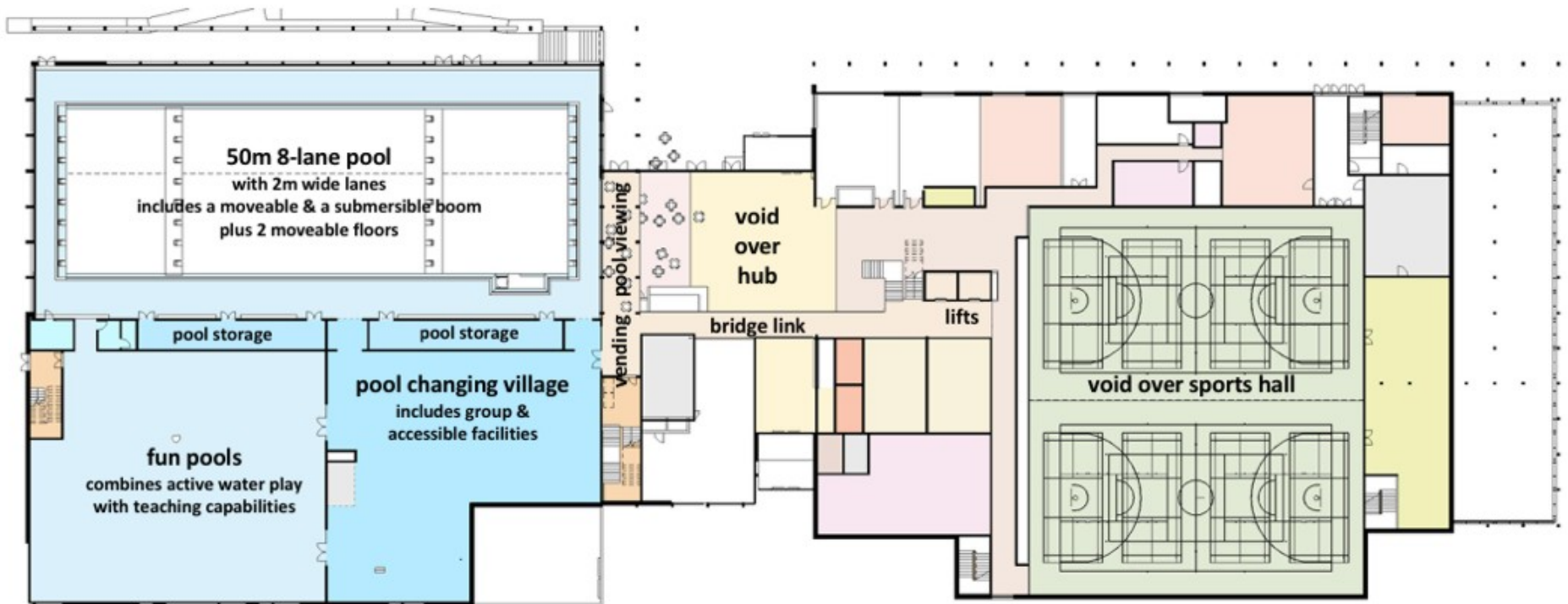


**Village changing**



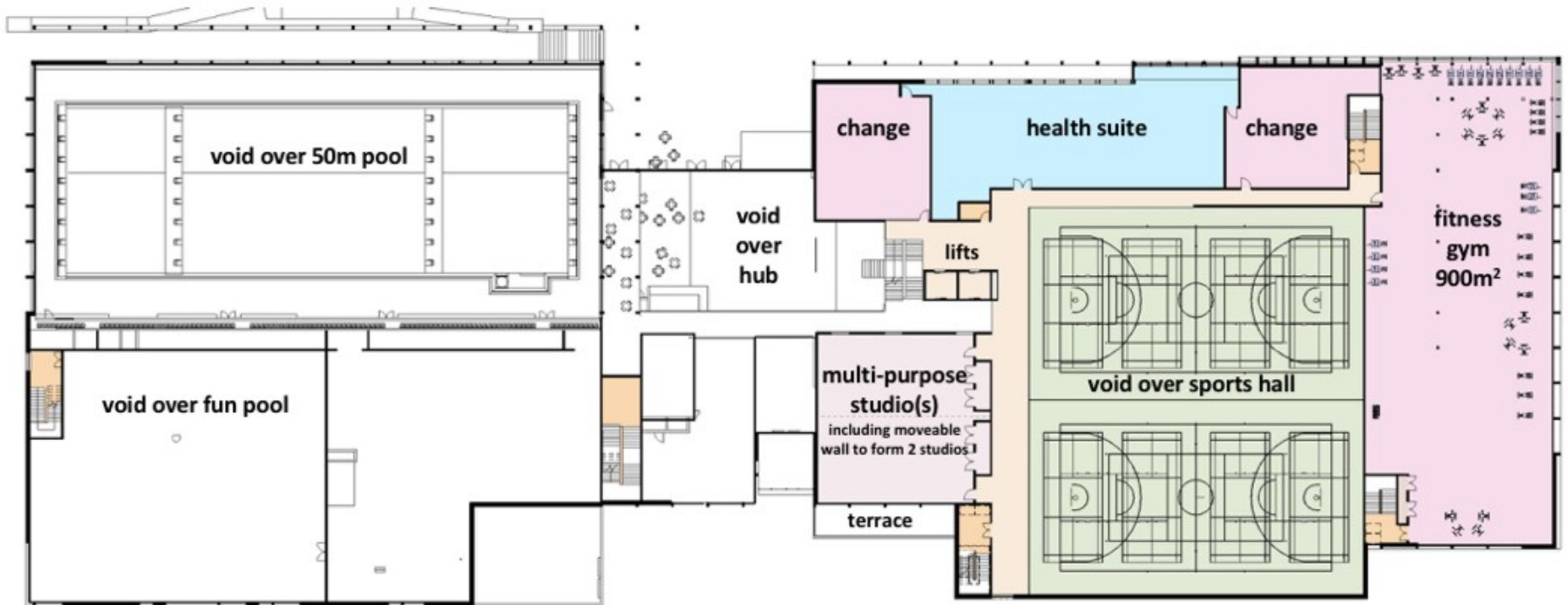
## Level 0

# Hub area and dryside accommodation



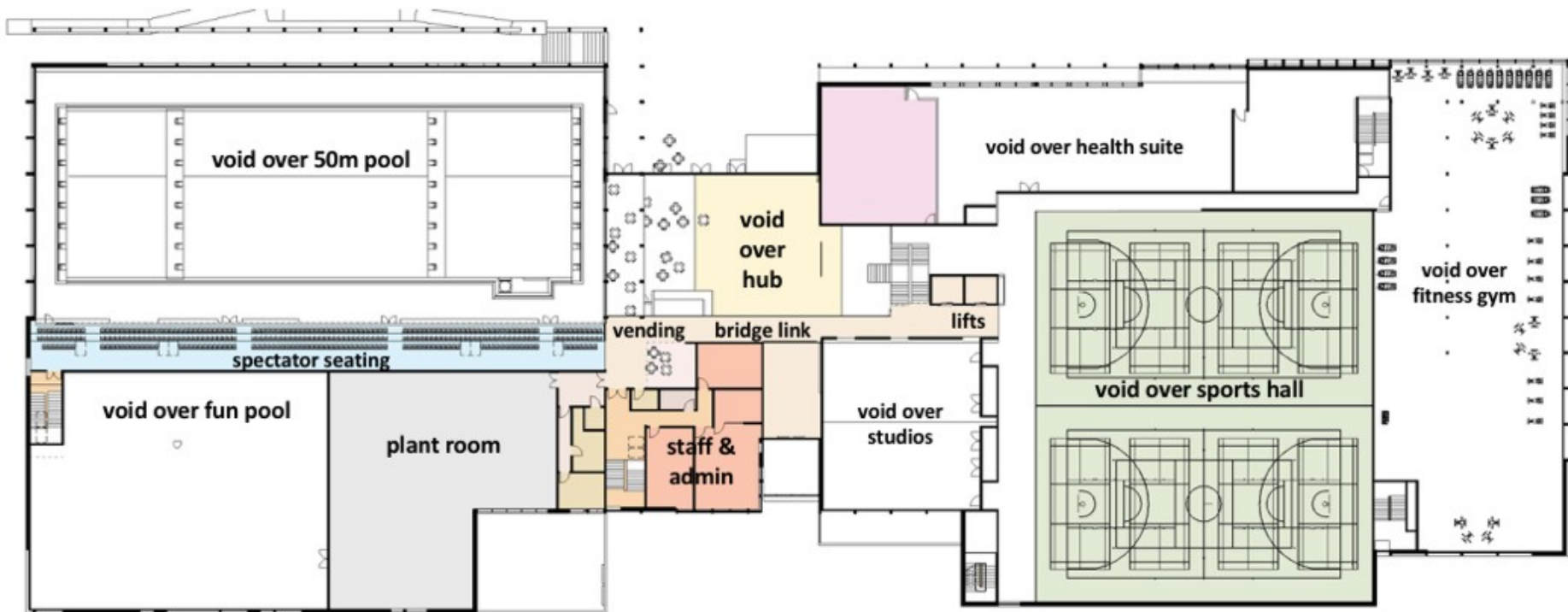
# Level 1

## Wetside provision



# Level 2 Dryside provision





## Level 3

# Wetside viewing gallery and administration



**To give your views on the  
proposed designs, visit  
[www.shapeabc.community](http://www.shapeabc.community)**